



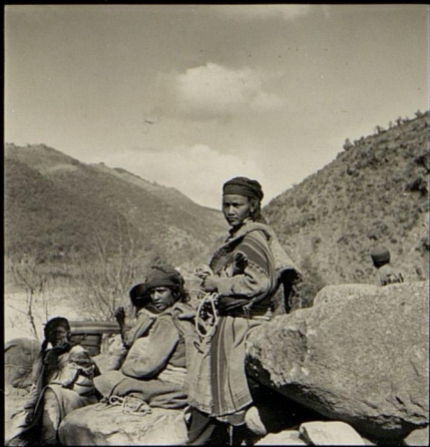
763 (2)

18118 (2)

Velox

Velox

Velox



Velox

Velox

~~(1) 8118~~

(1) 5942

Velox



6

763 (8) ~~8118(8)~~

66



763 (7)

~~848 (2)~~

Velox

Velox

Velox

Velox

Velox

28





763(11) - ~~818(11)~~

Velox

Velox

Velox



763(12) - ~~818(72)~~

74



~~8118/11~~

VELOX

VELOX

VELOX

763 (14)

VELOX

VELOX

VELOX

S  
VELOX



763/13/

~~8119/19~~

190

Velox

Velox

Velox

Velox

Velox

Velox

Velox

Velox





763 (16) ~~8118/70~~

VELOX

VELOX

VELOX

8

VELOX

VELOX

VELOX



Vélox

6

Vélox

Vélox

Vélox

Vélox

763 (15/1) 8118 (15)



697(19) / 118(18)

the  
M  
M

1913-1914

1913-1914





III

POST CARD

763(20)

8118(20)

~~CORRESPONDENCE~~

ADDRESS ONLY

B. 63





~~7118~~(22) 763(22)



763 (21)

ADDRESS

CORRESPONDENCE

POST CARD

8118(21)



763/23) 5718(23)

Lad akisto

Lad akisto



763(24) ~~218(24)~~





763(26) ~~8118(26)~~



~~8118~~(25) 763(25)



763(27) / ~~8118(22)~~

Ladation lamas.

Группа Ладакцевъ  
с Ладото.



2

763(4)

~~25115(4)~~

*Velox*

*Velox*





~~4118(3)~~

763(3)

Velox

Velox

Velox



Velox

Velox

Velox

Velox

~~(9) 8/18/2~~

(9) 594



763/5/ ~ ~~8118(5)~~



763(9) - ~~8118(9)~~

53

F





763-110) ~~1295118(40)~~

Velox

Velox

Velox





Vélox

Vélox

1

Vélox

78

Vélox

Vélox

Vélox

~~(84) 217~~ / 81 / 59.7



VELOX

~~763/17~~

VELOX

VEL

763/17

VELOX

FO

VELOX

VELOX

VELOX