



THIS IS A
KODACHROME PRINT
MADE BY
EASTMAN KODAK COMPANY
T. M. REGIS. U. S. PAT. OFF.
Week of Nov. 24, 1952 2

~~(F) 12481~~ (17809)



~~12471(2)~~

THIS IS A
KODACHROME PRINT
MADE BY
EASTMAN KODAK COMPANY
T. M. REGIS. U. S. PAT. OFF.
Week of Nov. 24, 1952 2

50852



503(5)

~~12471(6)~~

Velox

Velox

Velox



503(7)

~~12471(7)~~

2

1



J.M.W. Turner
Rain, Steam, and Great Central Railway
1844

503(9)

12474(4)

017 Expertphoto d34 076 12/11/04 12:29:3
6 IMG_0586.JPG



701(4)



Velox

503(6)

~~12471(8)~~

Velox

Velox

Velox

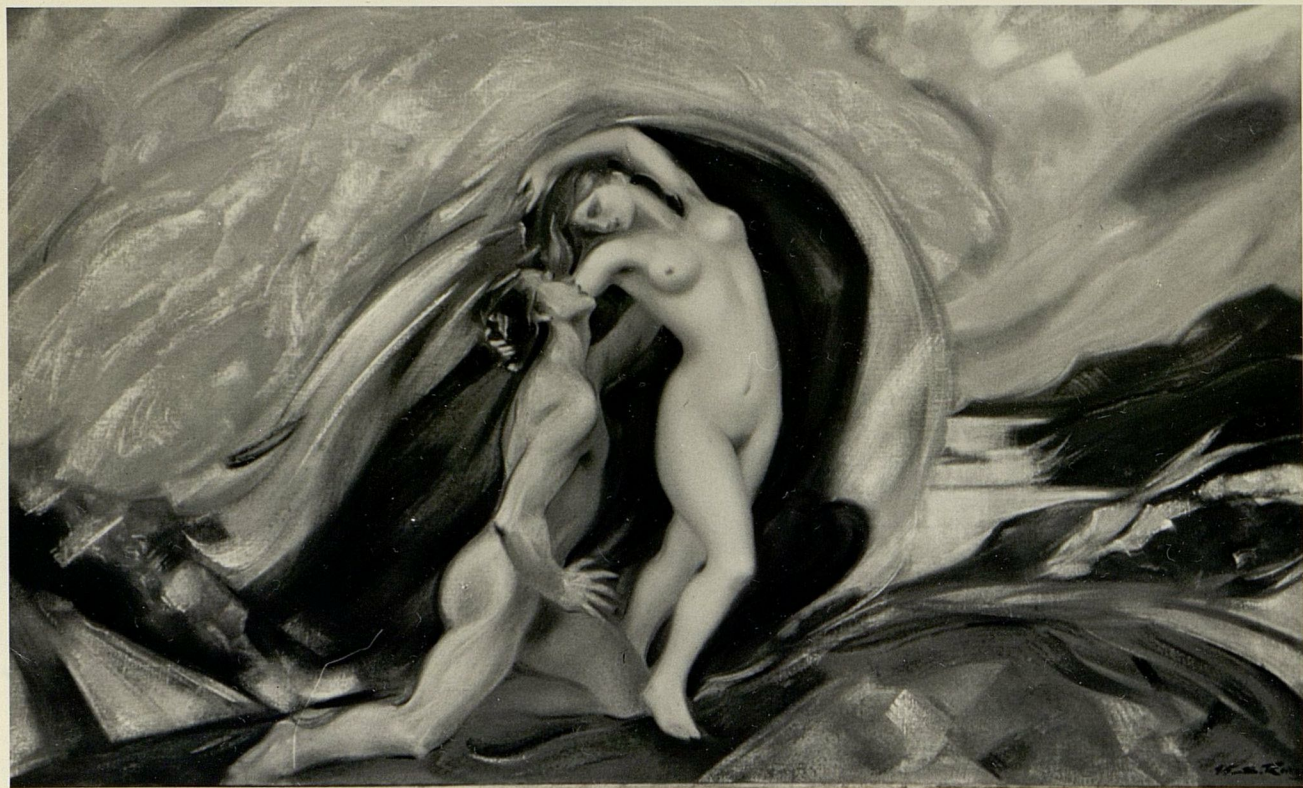
Velox



Velox

503 (H) ~~12471 (S)~~

Velox



503(10) ~~12471(10)~~

PHOTOGRAPH BY
STUDIO 7
BROOKFIELD, CONN.

Call Eternal 1945



46

503(8) ~~72471(9)~~

145 B) CALL ETERNAL. 1945
By S. Roerich



'45

503(3) / ~~42472(3)~~

Week of Nov. 24, 1952 2

T. M. REGIS, U. S. PAT. OFF.

EASTMAN KODAK COMPANY

MADE BY

KODACHROME PRINT

THIS IS A

145A) CALL ETERNAL

By S. Roerich

1945