



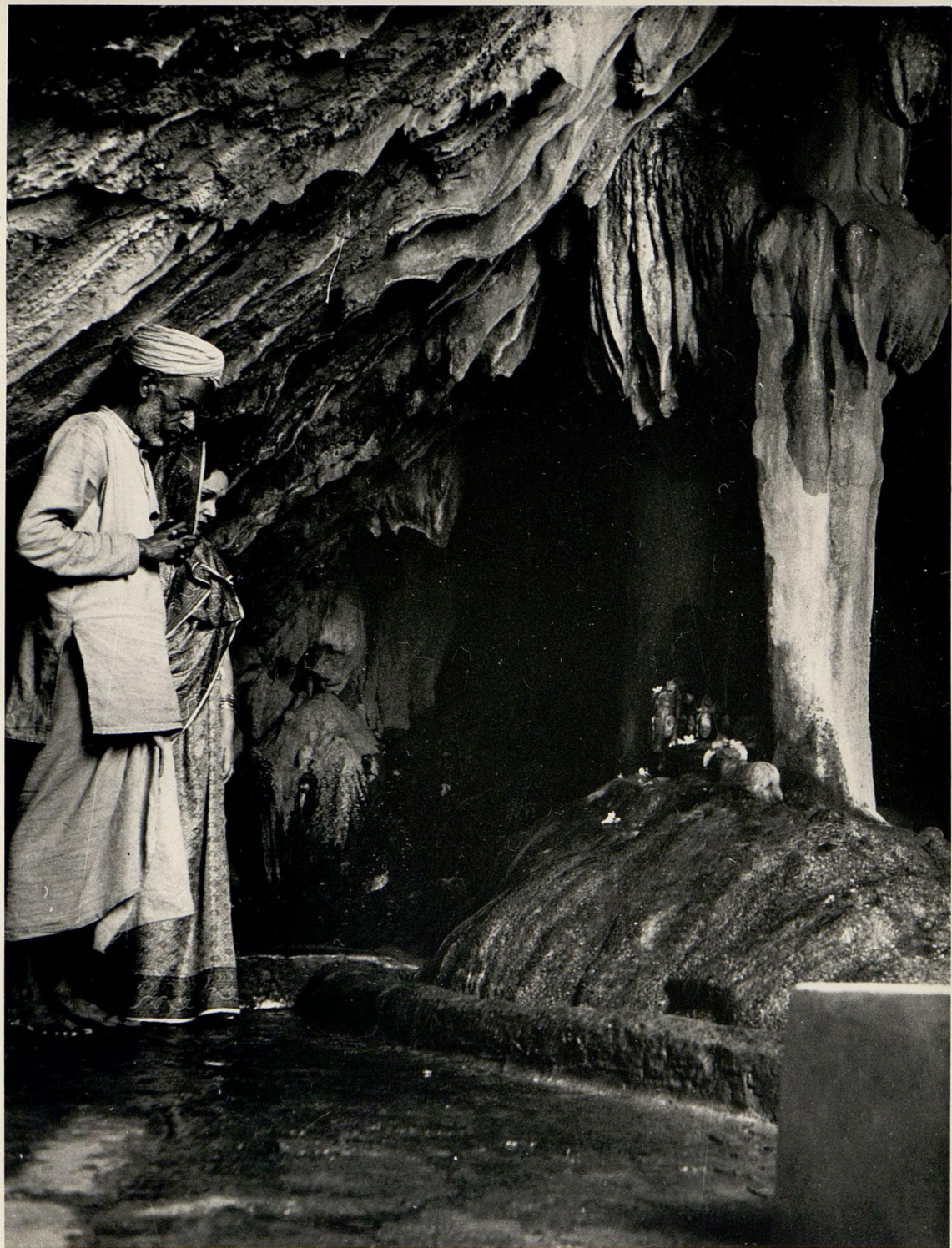
327(1) ~~12031(1)~~



327(2)

~~12031(2)~~







327(3)

~~18081(3)~~

Agfa-Brovira

Agfa-Brovira

Agfa-Brovira

Agfa-Brovira

Agfa-Brovira

Agfa-Brovira

Agfa-Brovira

Agfa-Brovira

Agfa-Brovira

Agfa-Brovira

22

12034

Agfa-Brovira