

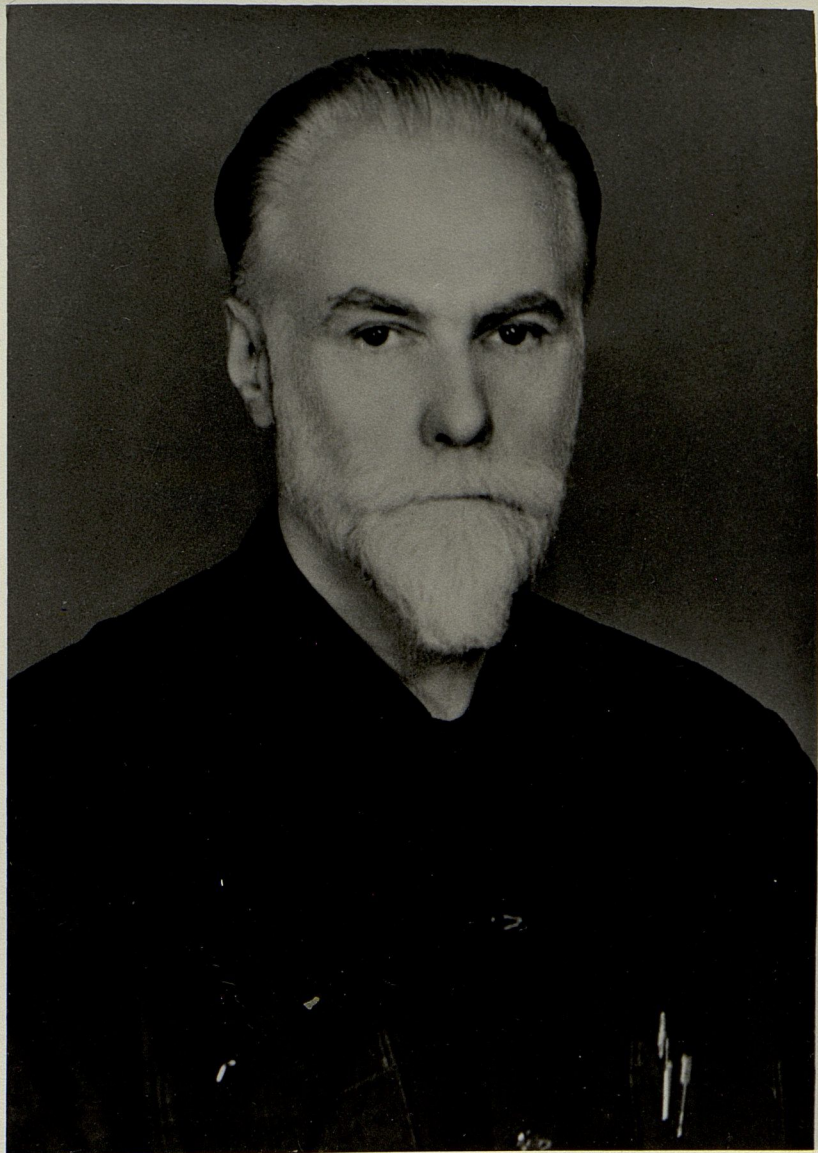
167 (36)

1961

9240(8)

5608(8)

Ref. A. 13305 A-7A  
DELHI PHOTO CO  
NEW DELHI



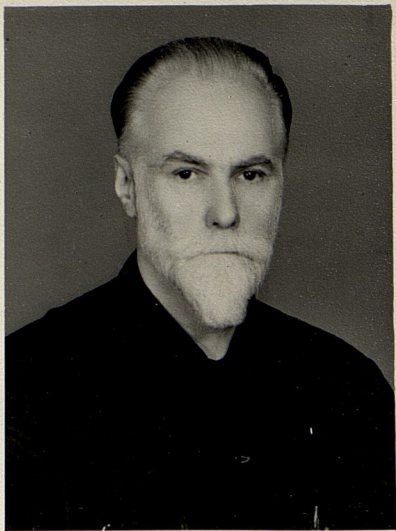


1961

1961  
(58) + 91

No. R 13305 A 74  
DELHI PHOTO CC  
NEW DELHI



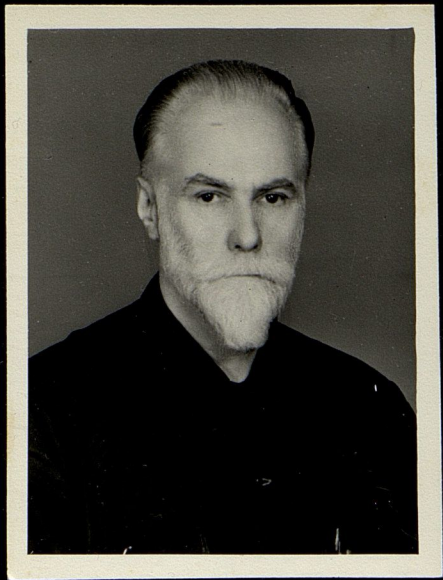


167 (38)

1961

560 P (10)

50.4808



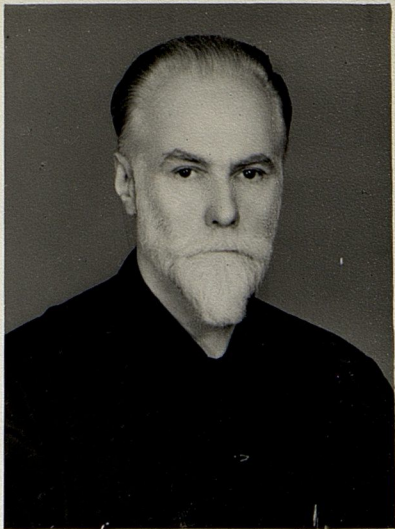


167(37)

1961

5608(11)

504808



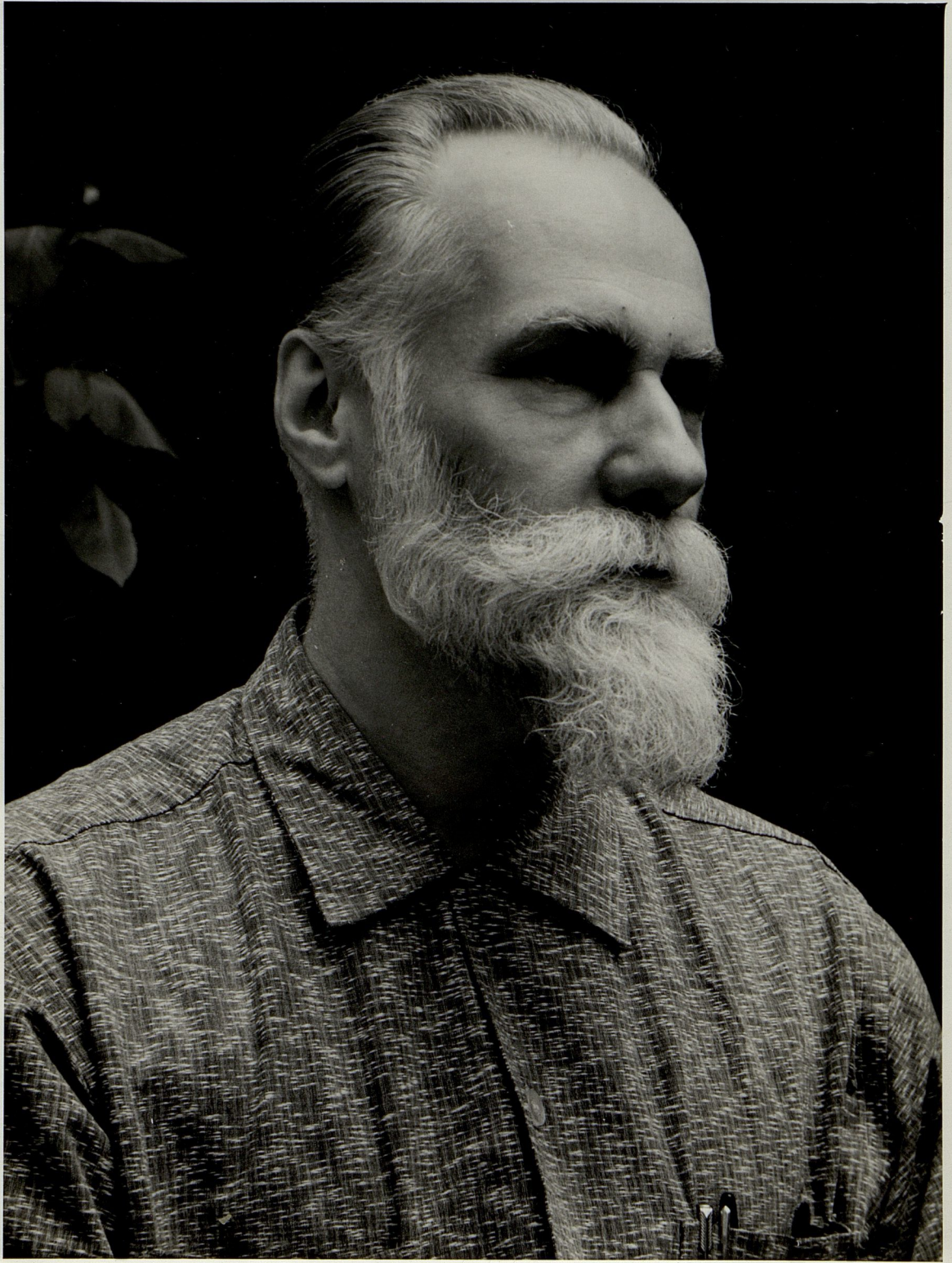
167(39)

196/2119

5808(12)

5.0.4808

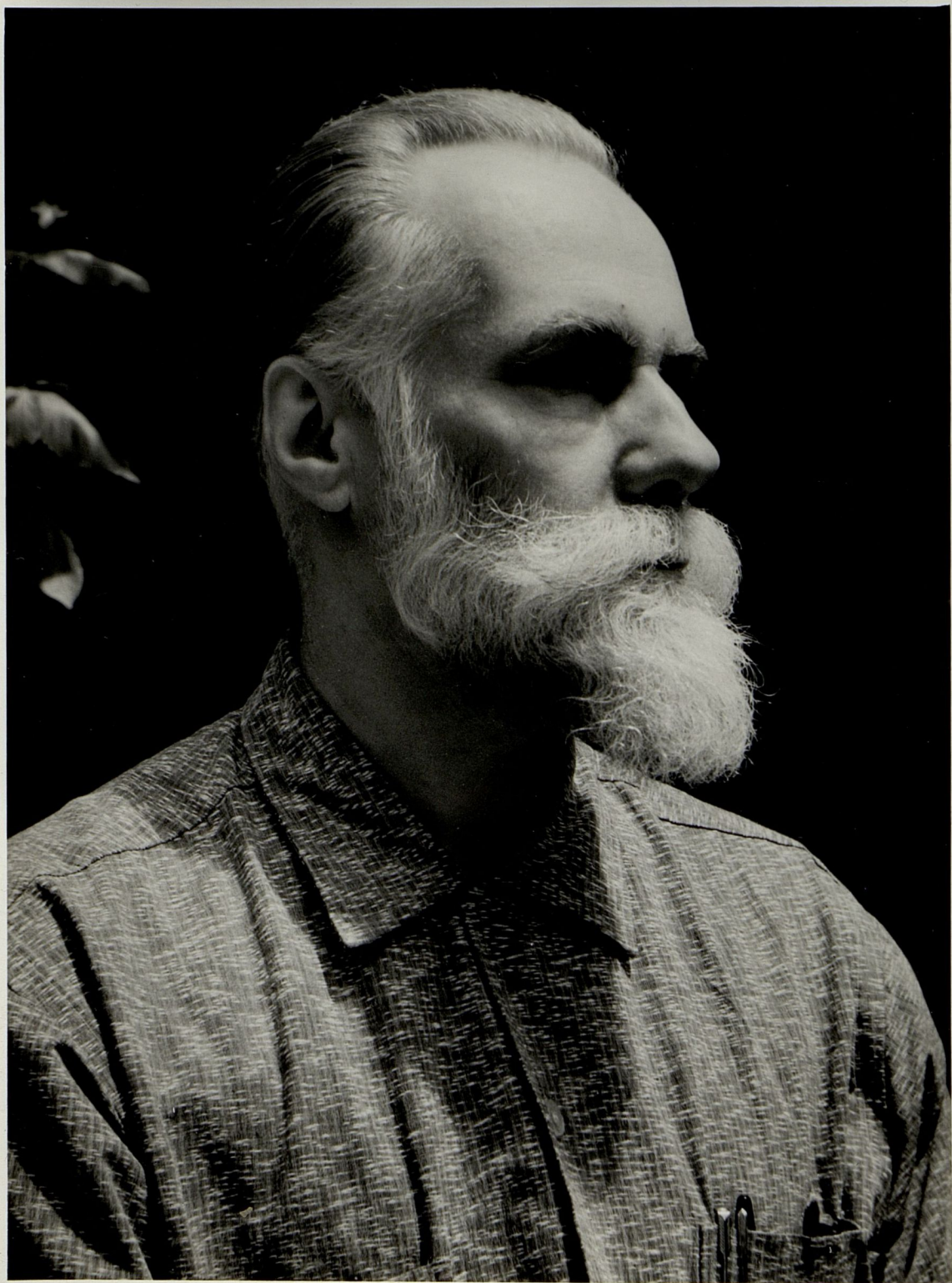






167(30)

1964

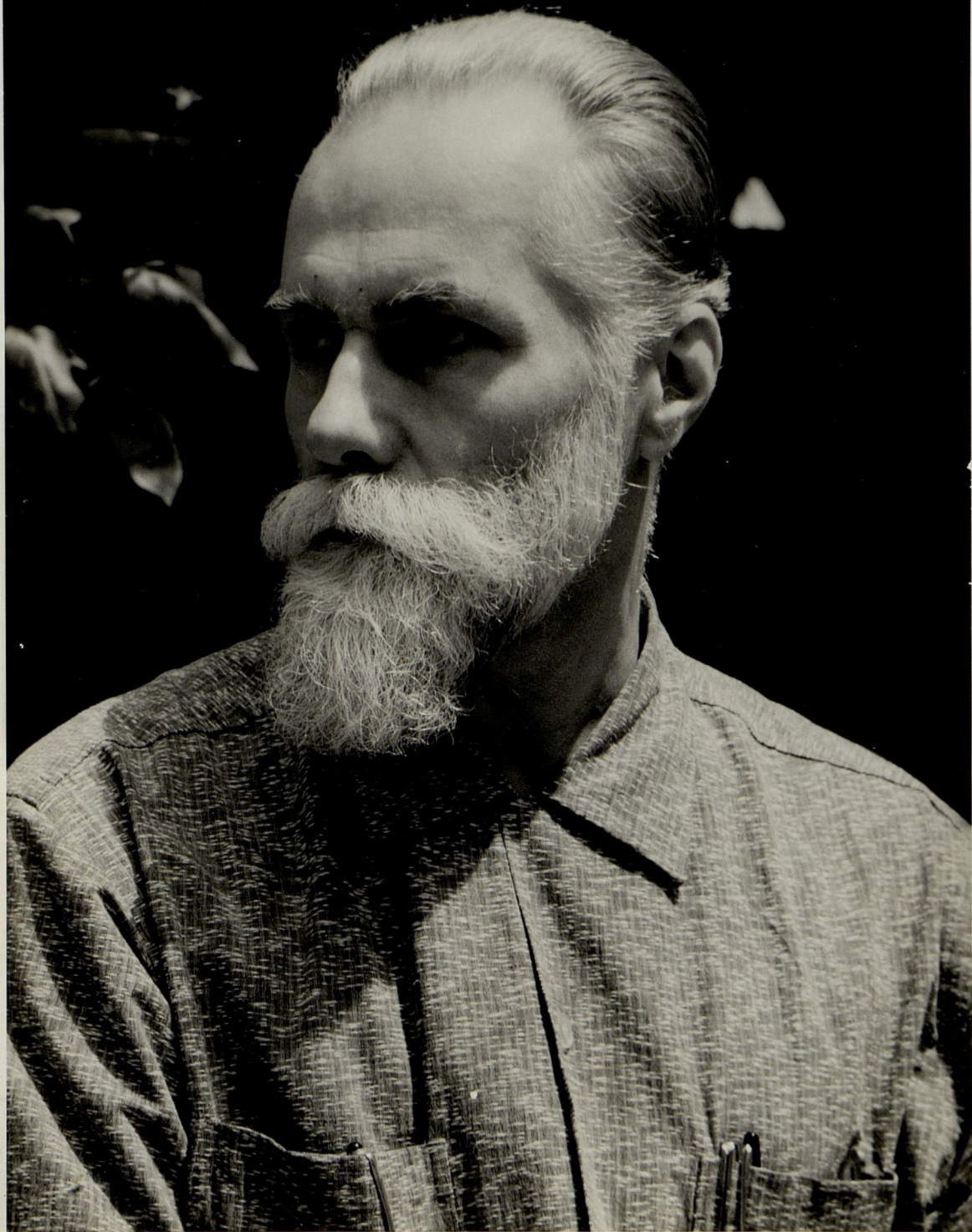




167(31)

1961

9240(3)

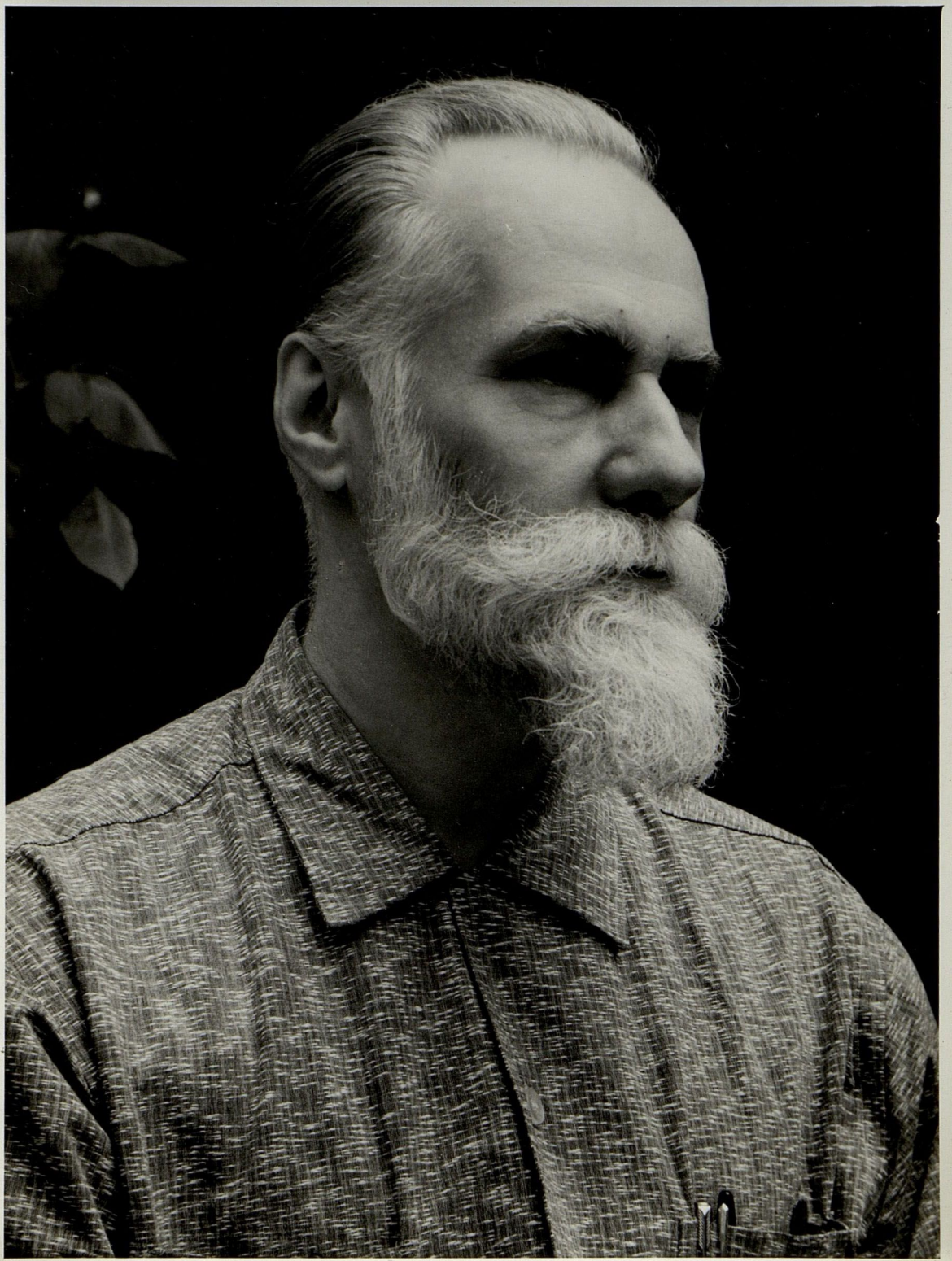




167(33)  
1961

~~9240(5)~~



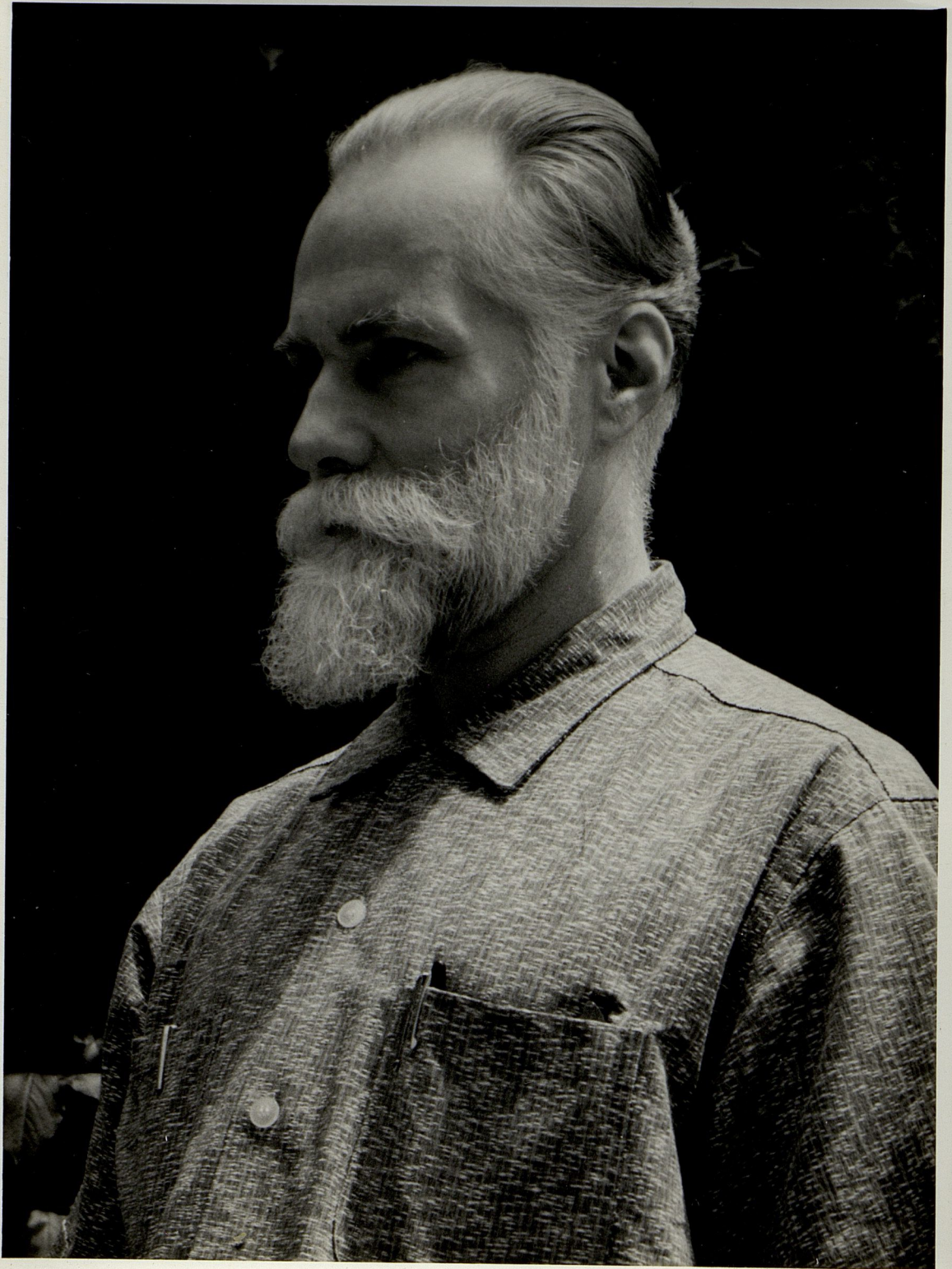


167(32)

1961

~~9240(4)~~



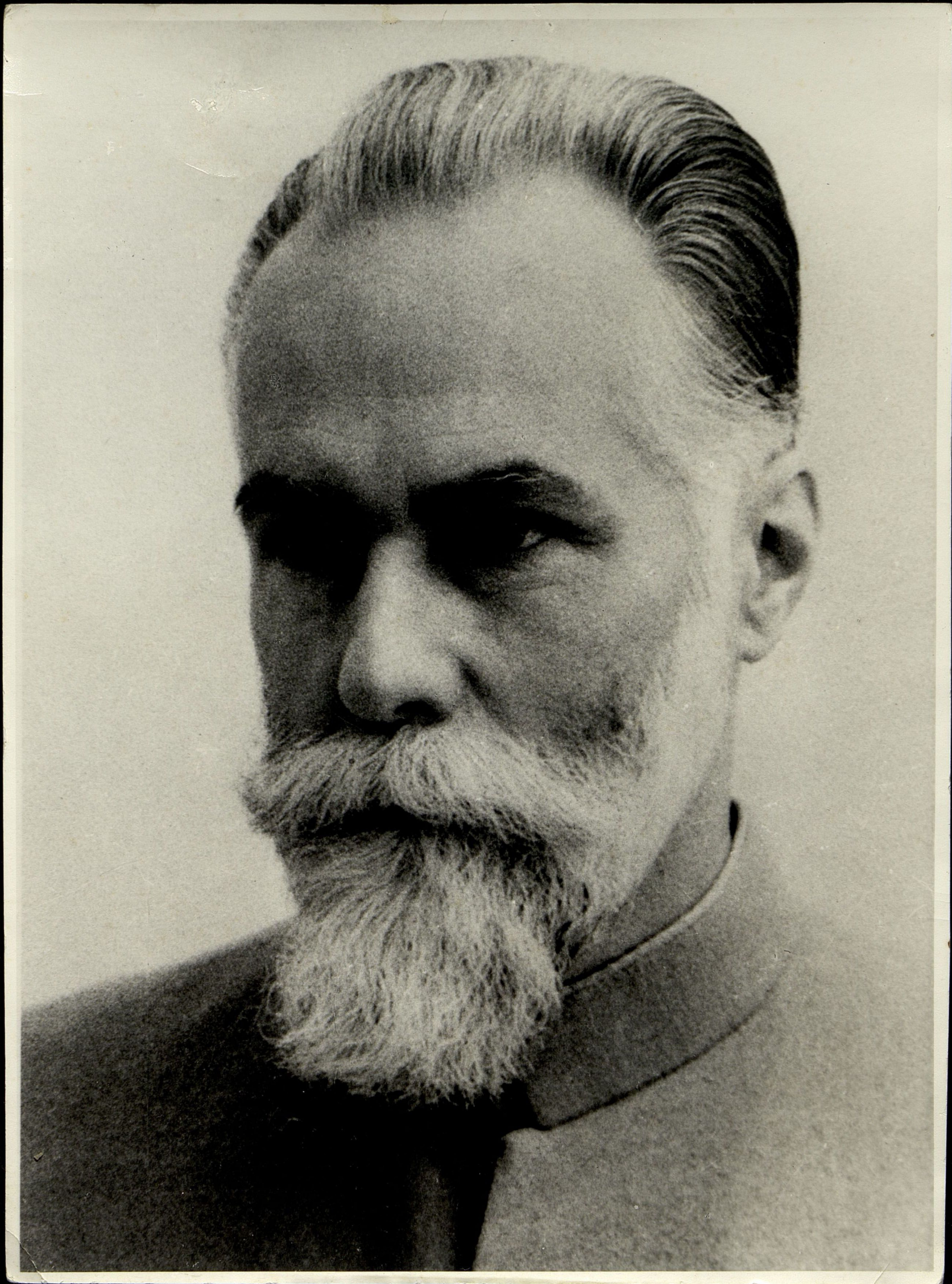


167(34)

1961

9240(6)







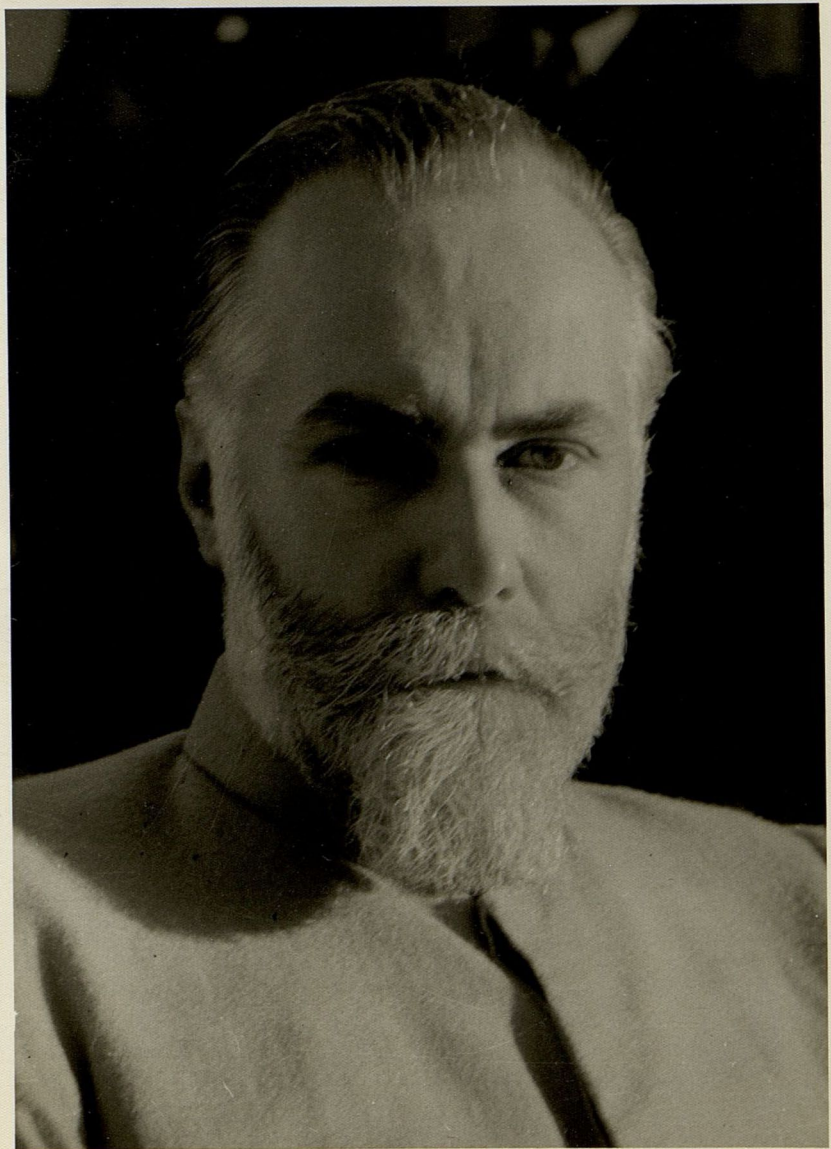
D<sup>r</sup> Poerich.  
1961

167 (40)

1961

5608 (4)





167(1)

~~9240 (33)~~

1850<sup>01e</sup>

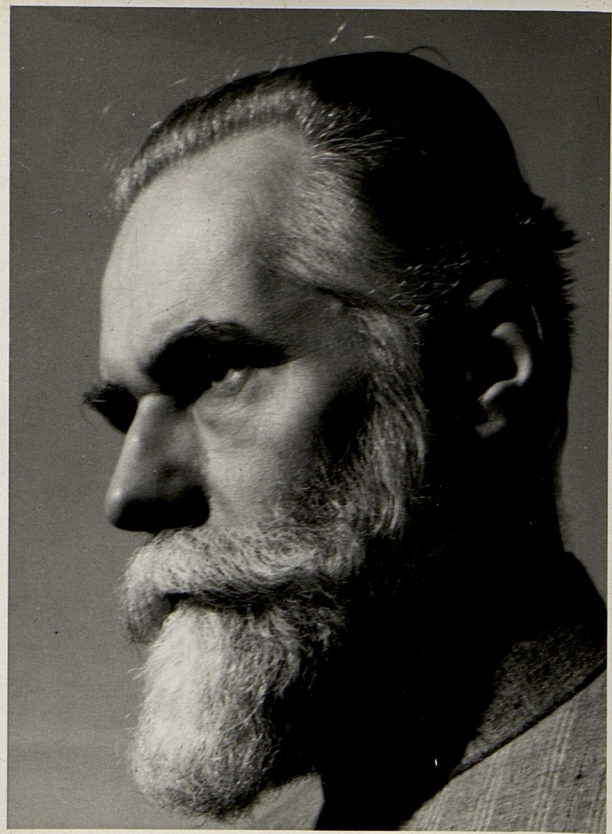
2

Photo :

S. J. R. SARMA,  
C. S. I. R.,  
Old Mill Rd.,  
NEW DELHI-1

---

~~5602 (12)~~



167(19)

1860-8

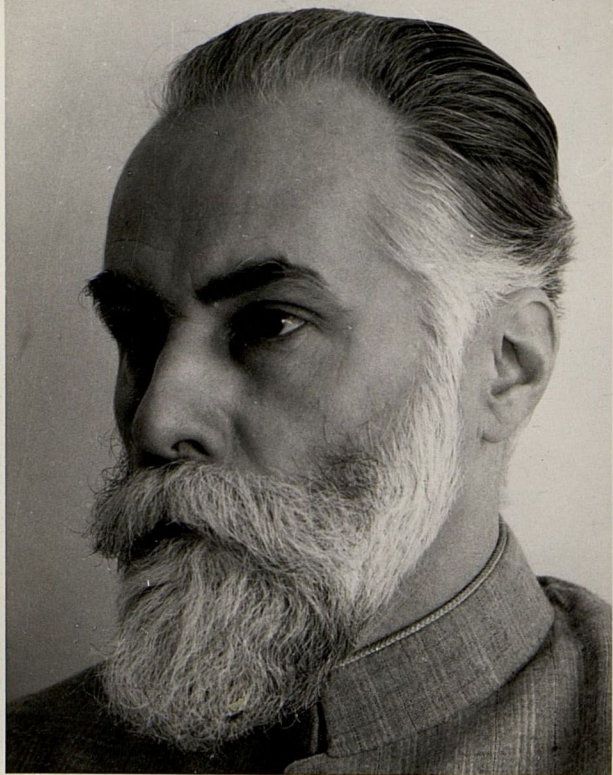
*Jaffa-Broving*

*Jaffa-Broving*

*Jaffa-Broving*

~~5603~~ (20)





167(22)

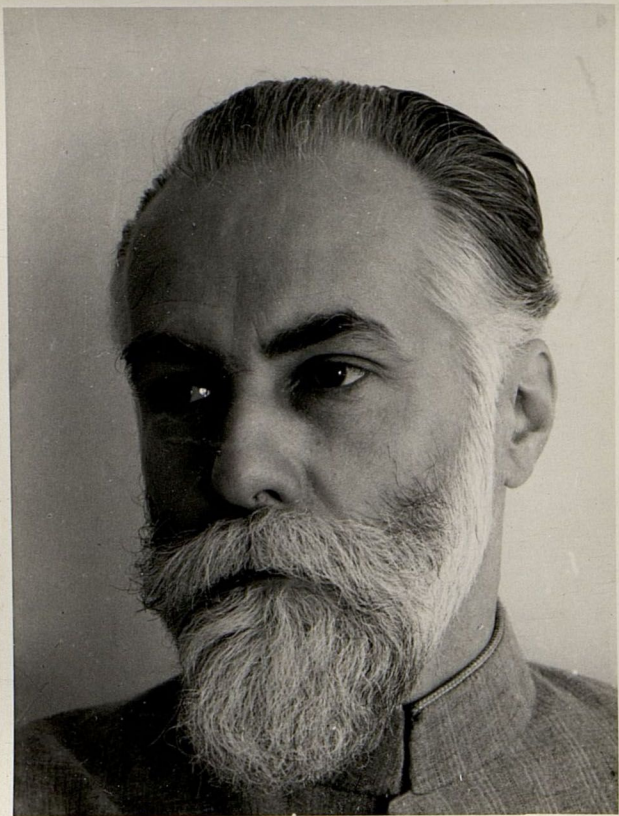
1860-e

Alpha Brewing

Alpha Brewing

~~5603 (91)~~

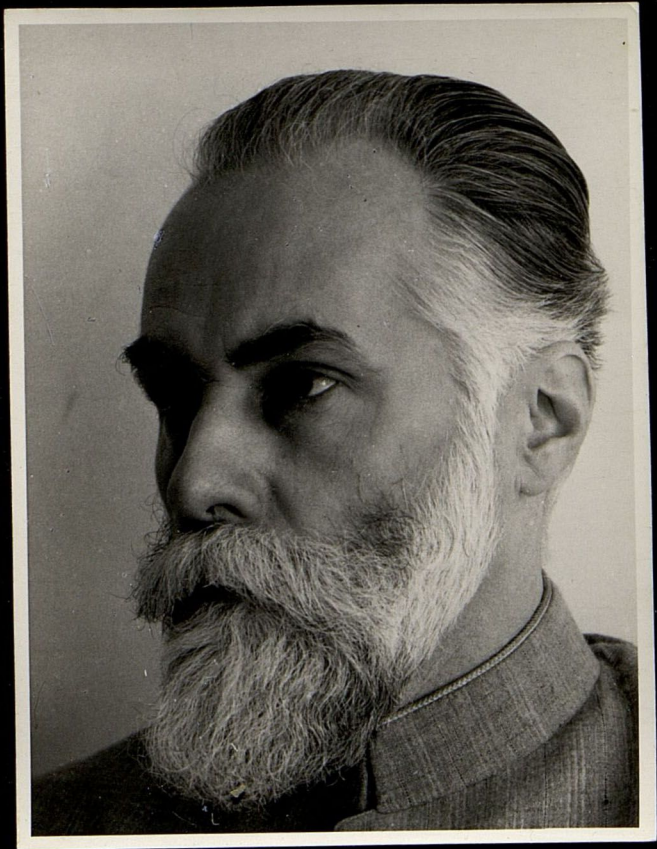




167(18)

1960-2

~~5603(17)~~

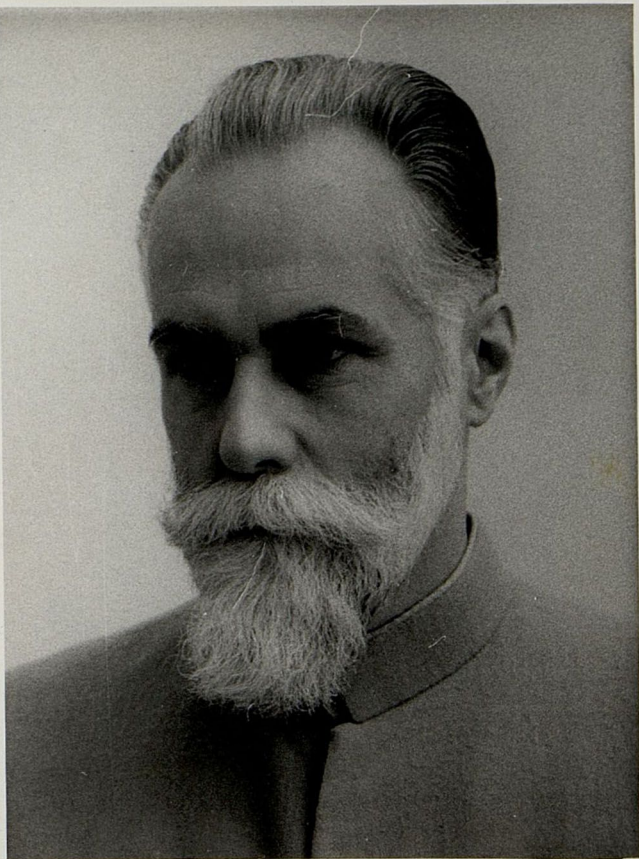


167(21)

1860-e

~~5603(23)~~

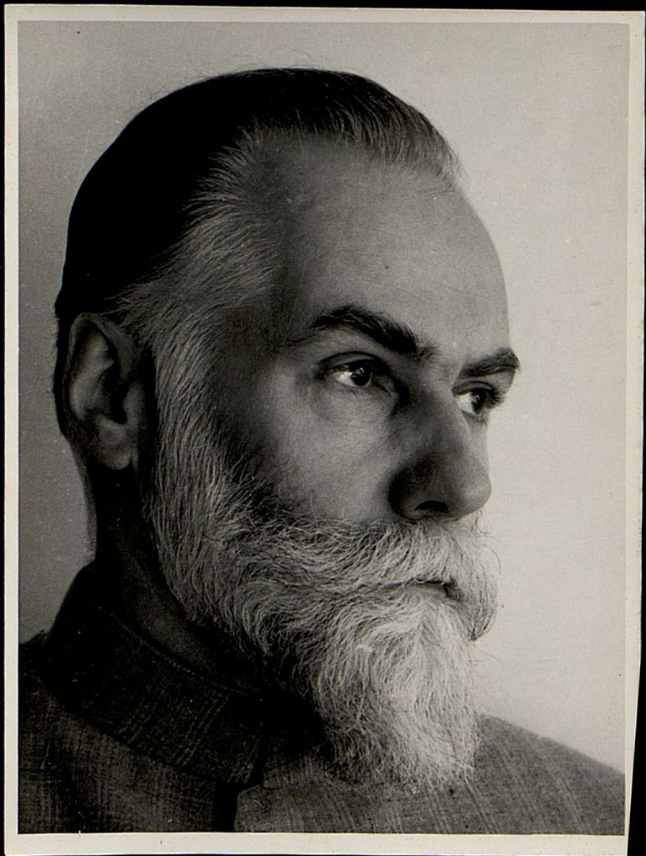




167(10)

1860-2

~~5603 (16)~~





167(17)

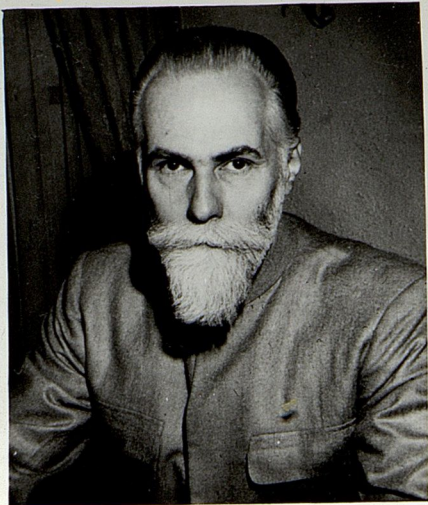


1860-e

Agfa-Bravura

Agfa-Bravura

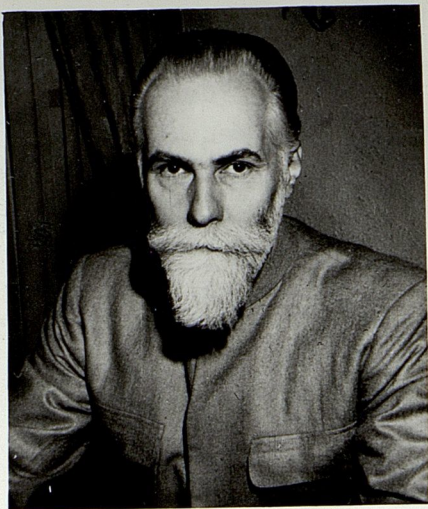
~~5603(21)~~



167(26)

1960-0

~~5806(15)~~

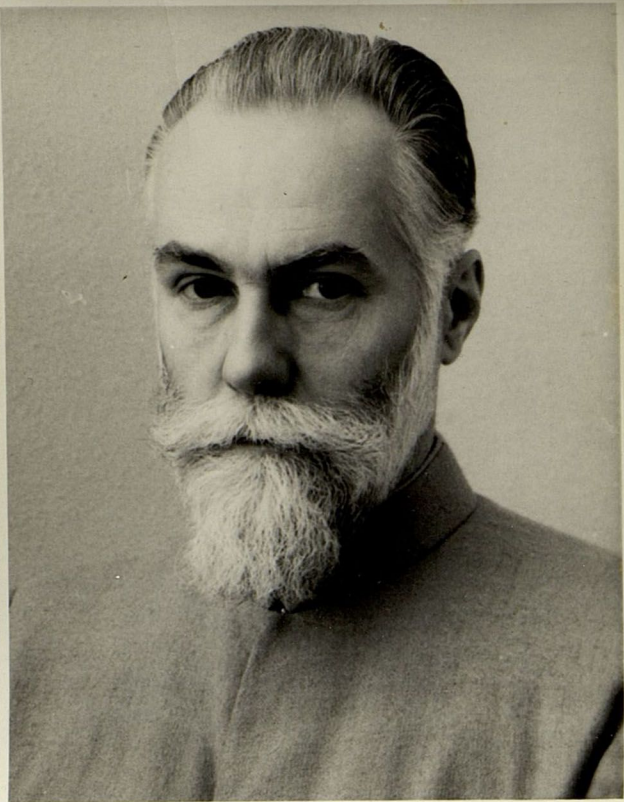




167(28)

1960-e

~~5806(14)~~



167(12)

1860-e

1. Receipt  $\frac{1}{4}$  right

sub

cab.

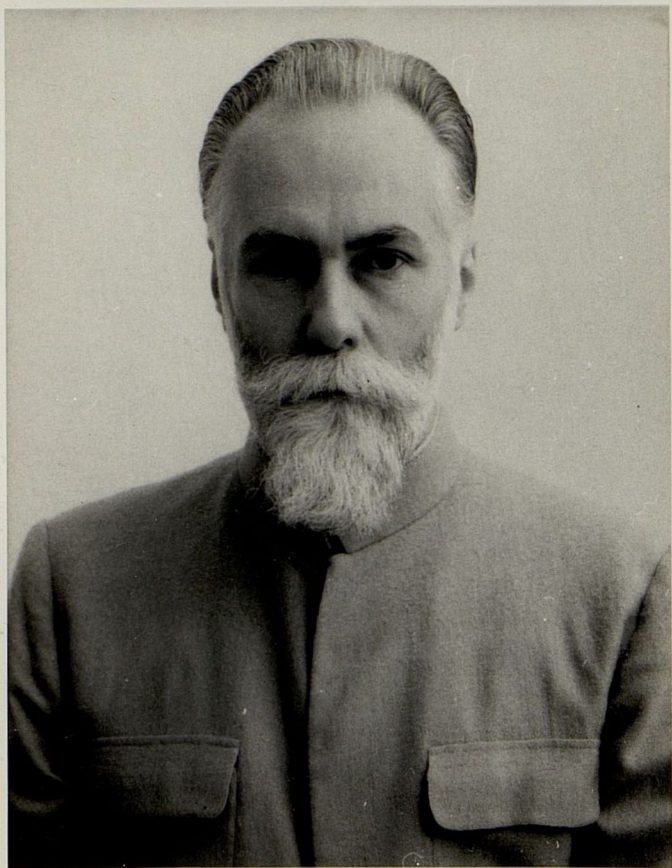
Glossy.

---

(17)

A.

5703

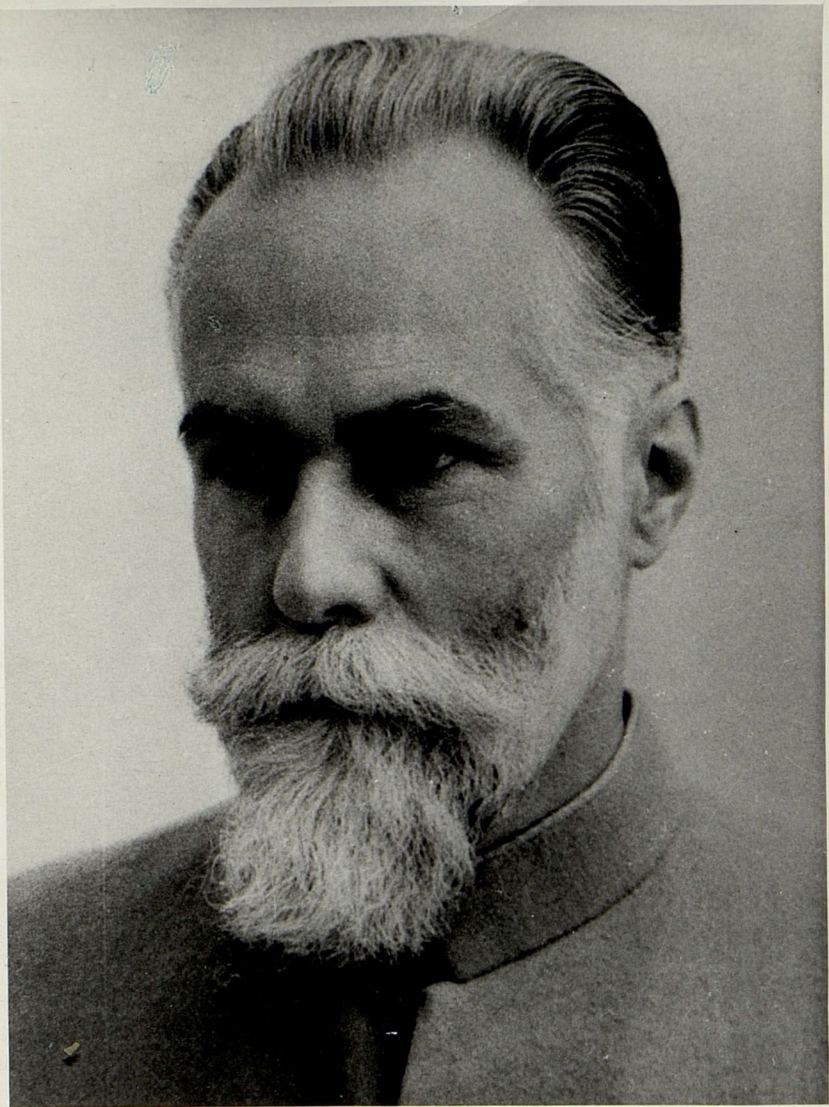




167(14)

1860-8

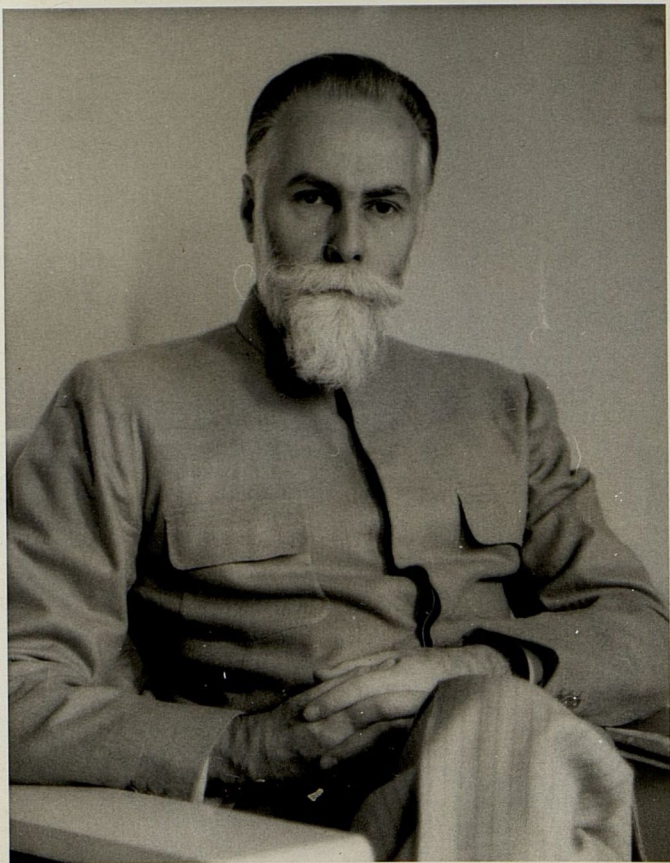
~~5603(25)~~



167(13)

1860-e

~~5603(10)~~

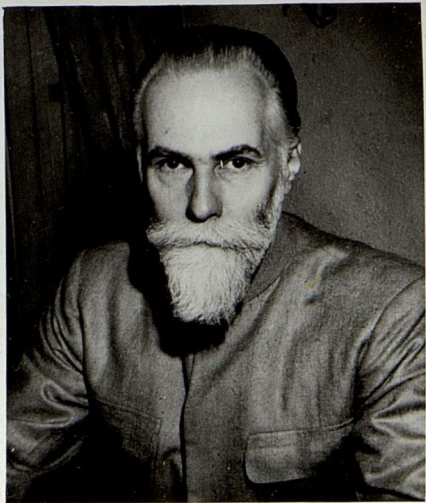




167(15)

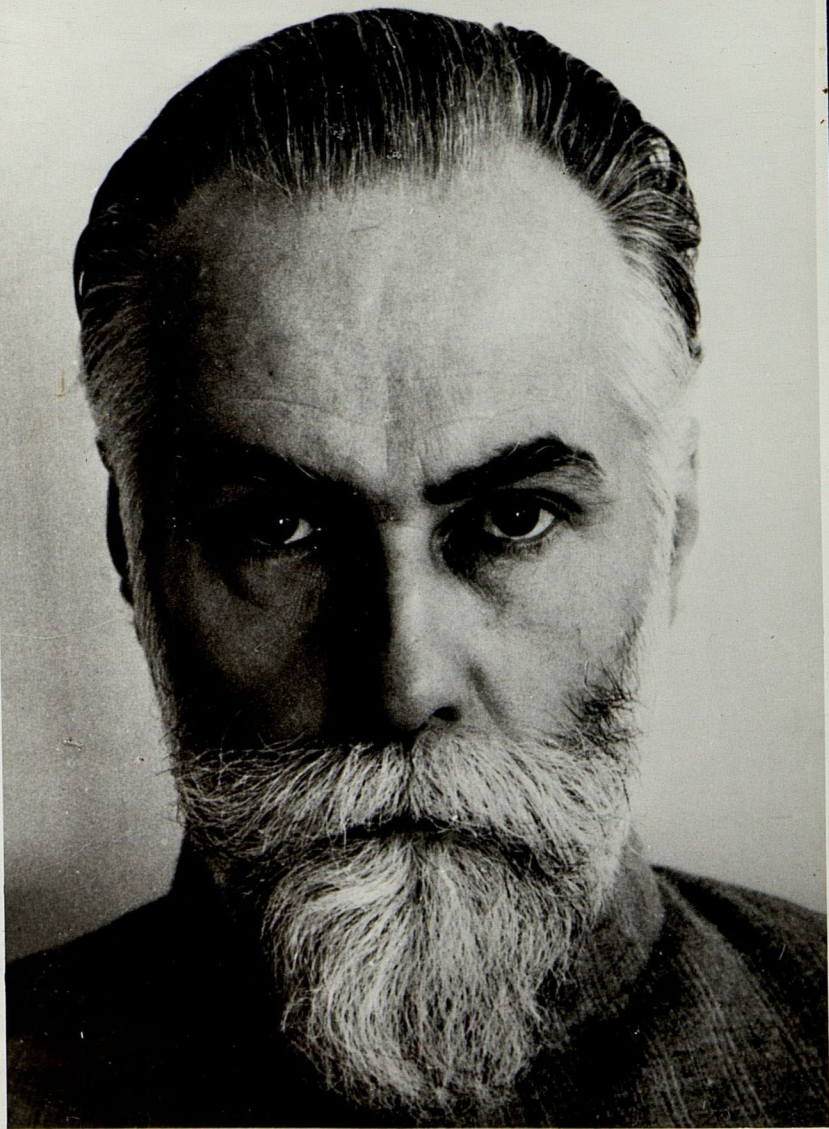
1860-e

5603(14)



1960-e  
167(24)

~~5806(17)~~



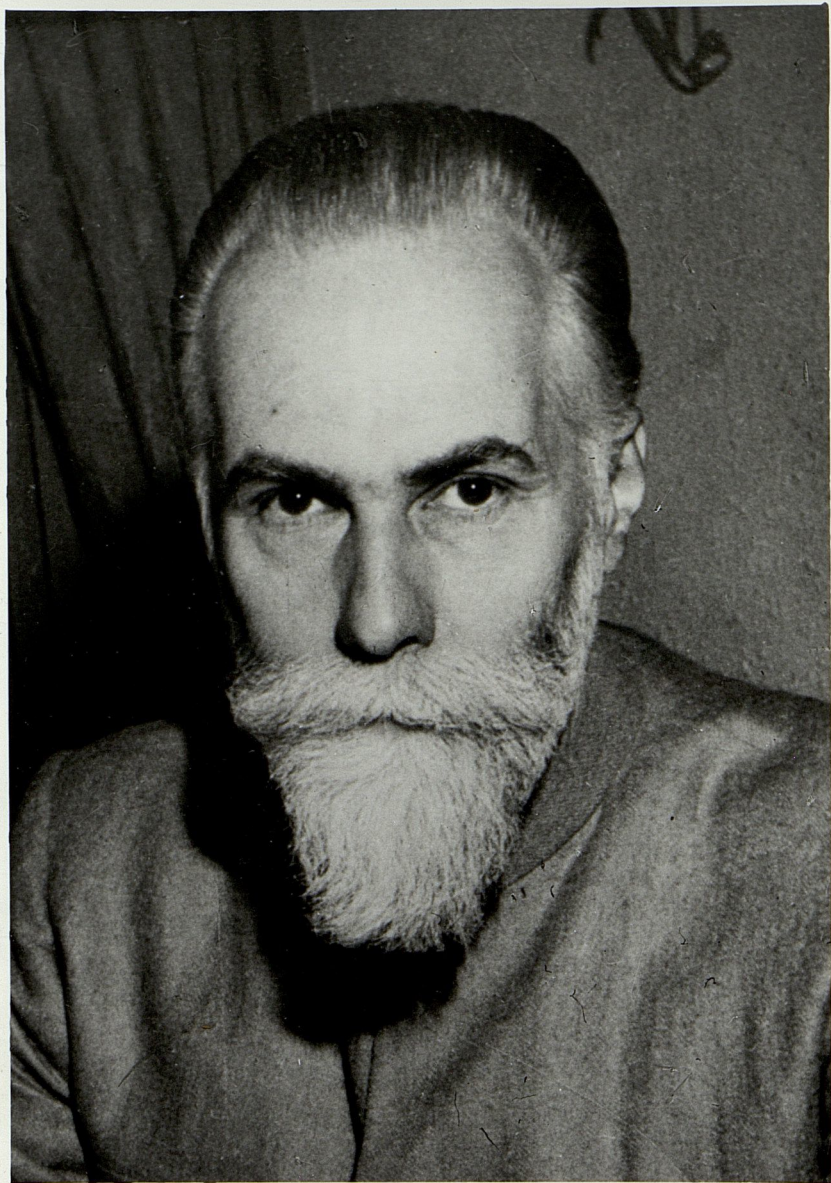
1960 - SVETOSLAV NICHOLAEVICH - DELHI



167 (23)

1860-e

5603(1)

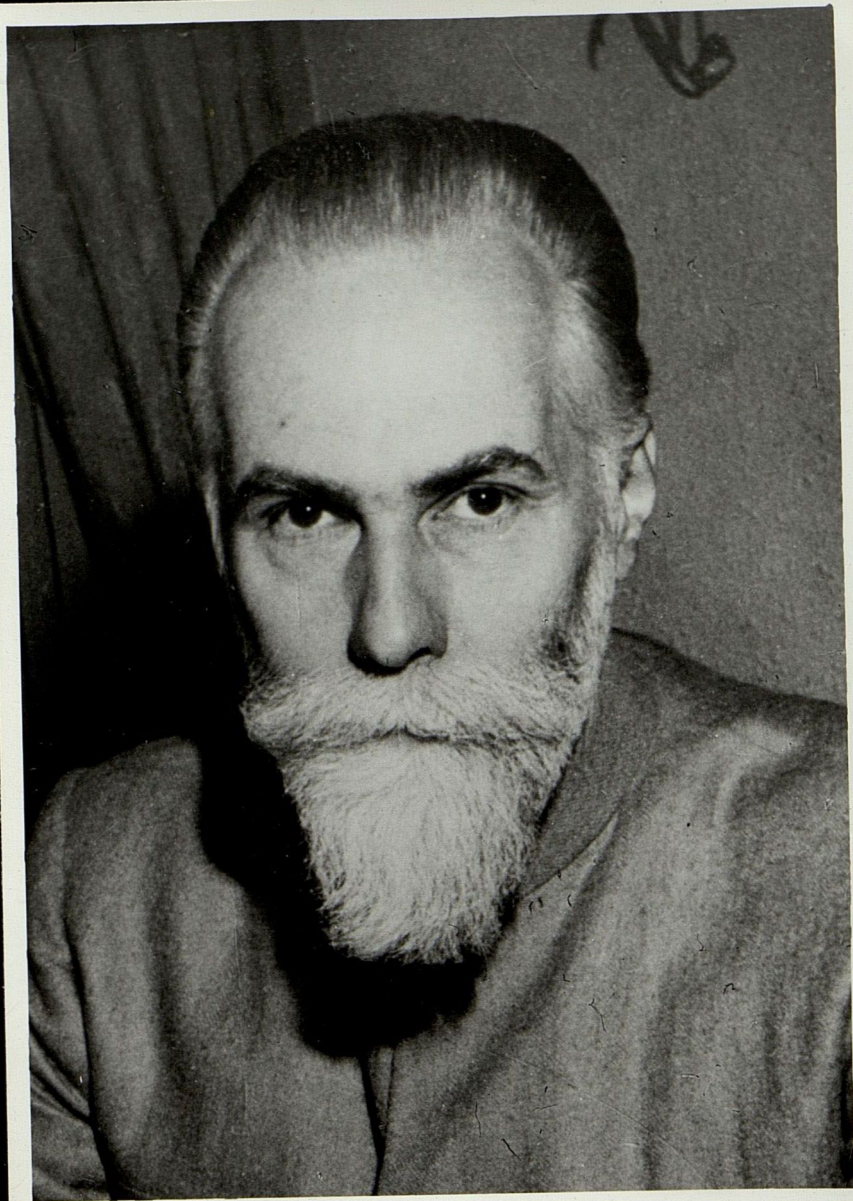


167(3)

1860-e

~~5603~~(3)



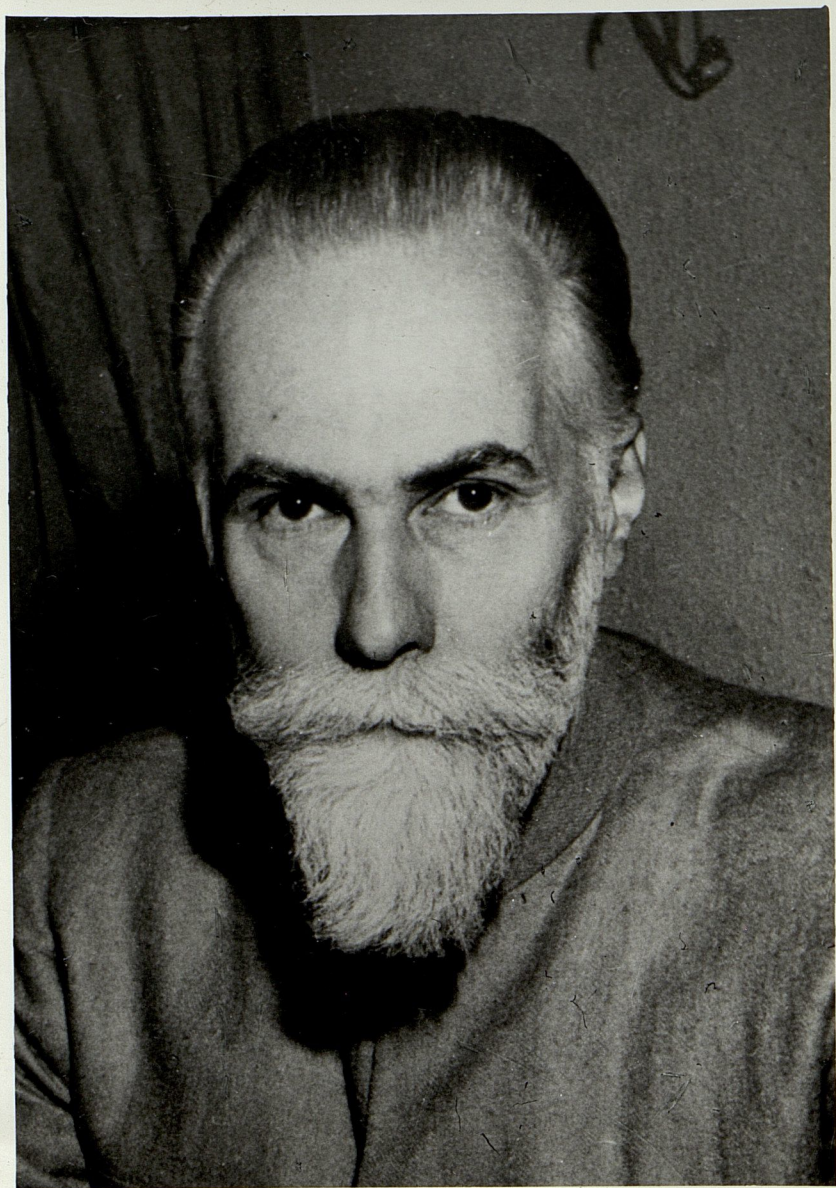




167(7)

1860-c

5603(9)

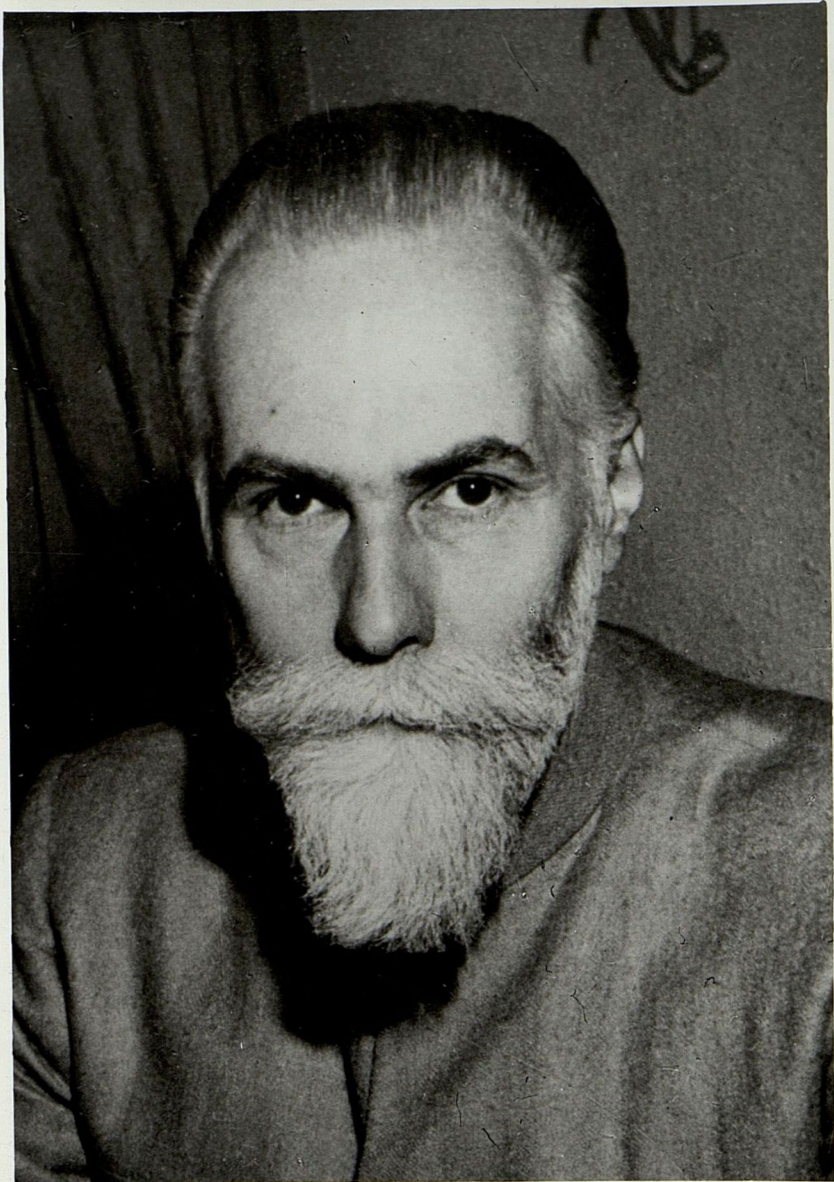


167(4)

1860-2

5603(6)



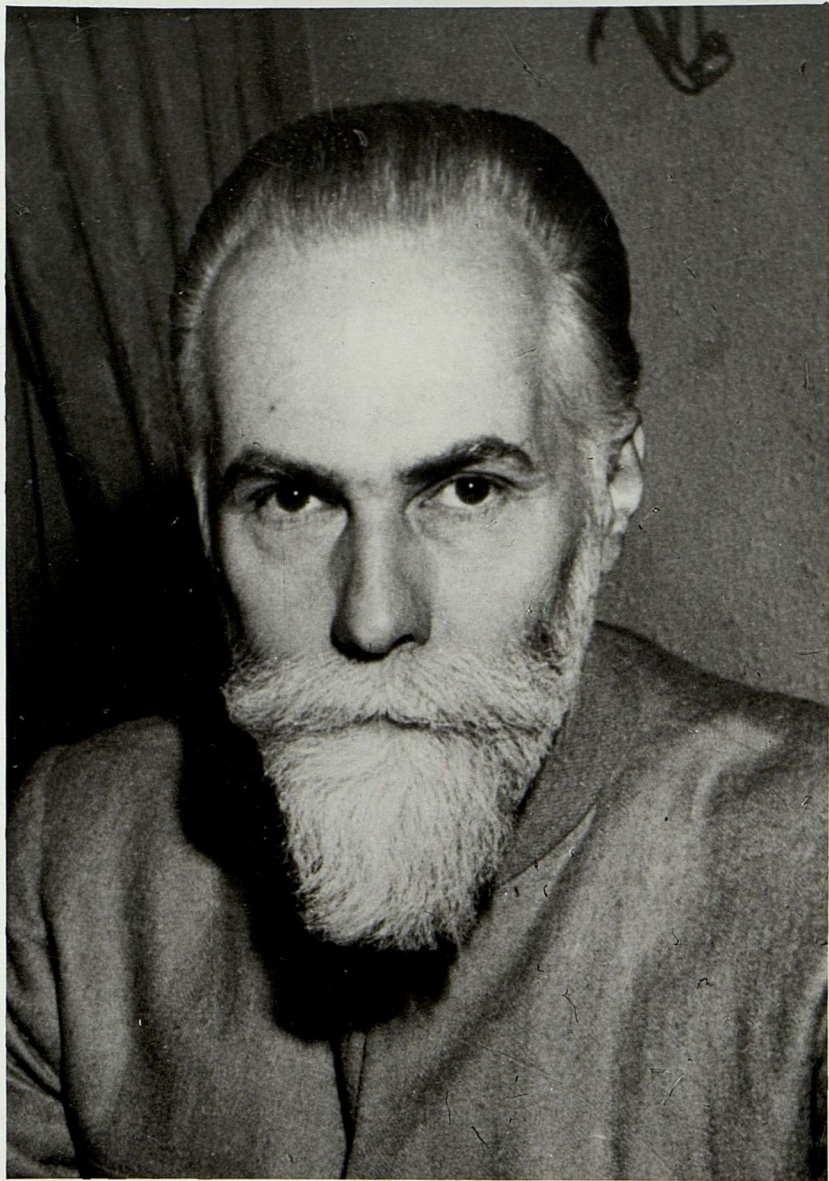




167(5)

1860-0

5603(4)

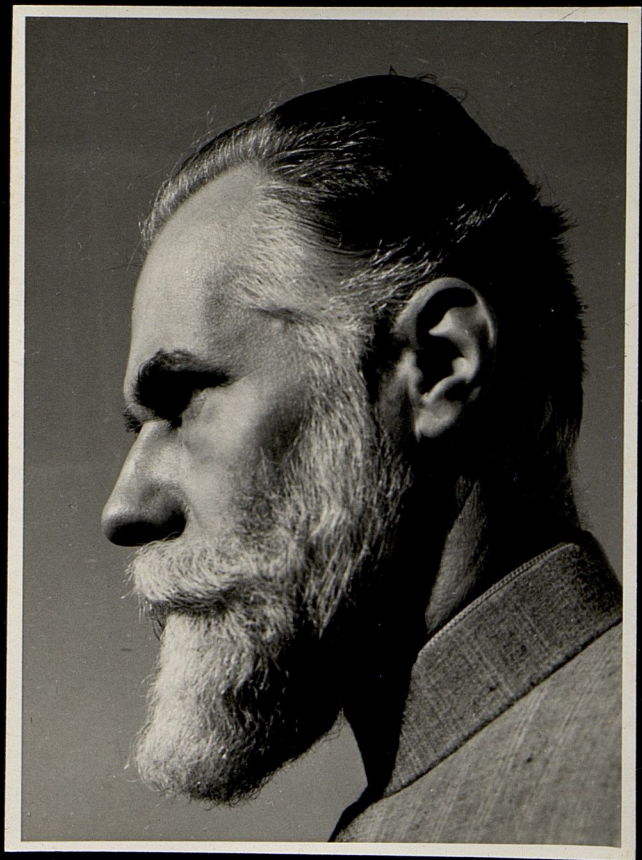


167(6)

1860-0

5603(8)







167(20)

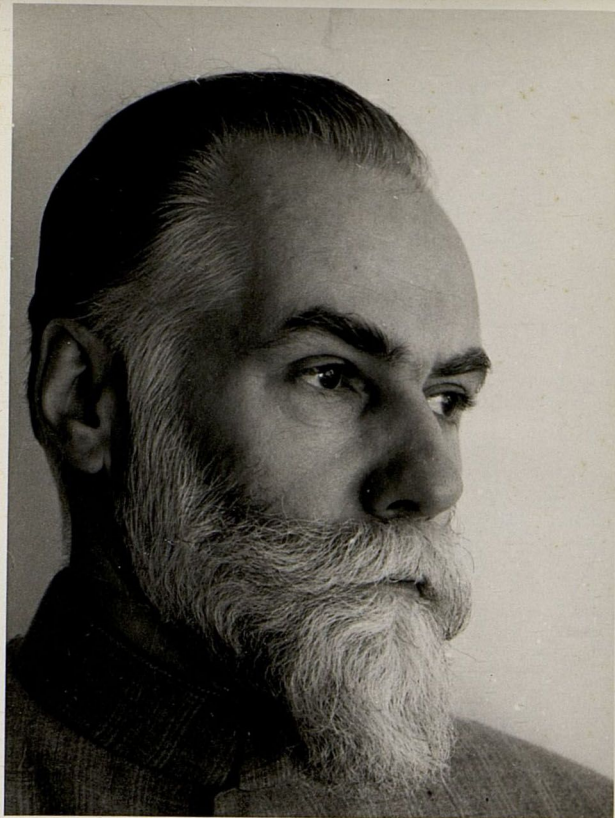
1860-0

Alpha Brovira

Alpha Brovira

Alpha Brovira

~~5603(19)~~



167(16)  
1960-e

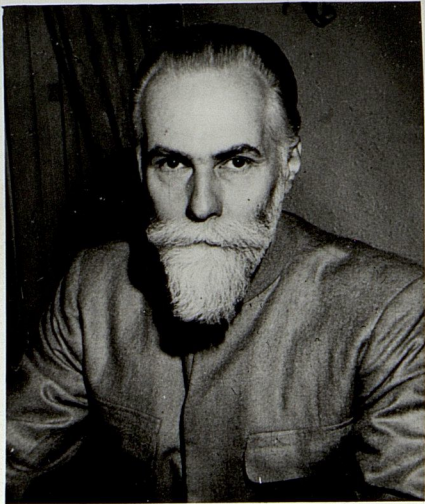
~~Agfa Brevira~~

~~Agfa Brevira~~

add.

~~5603(18)~~

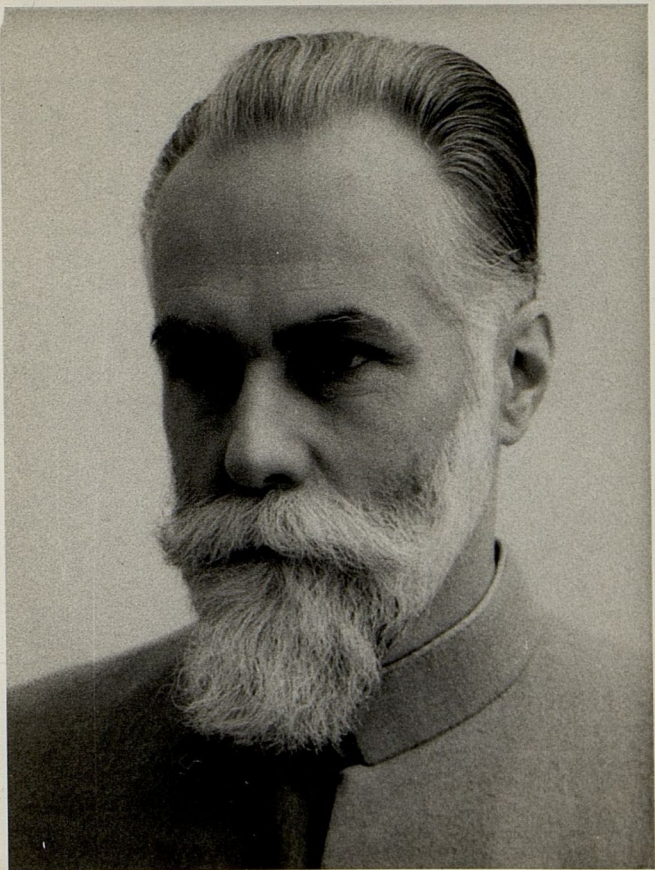




167(25)

1960-e

~~5800(16)~~

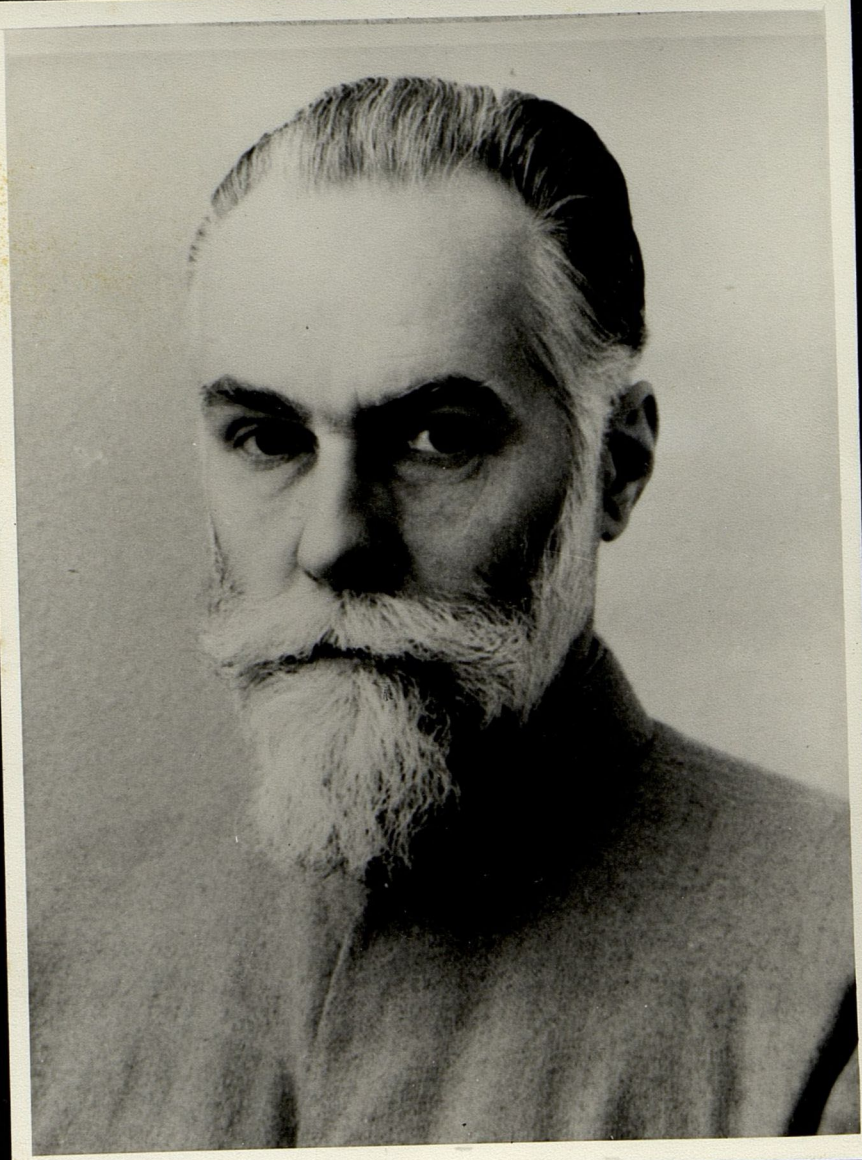




167(9)

1860

5603 (15)

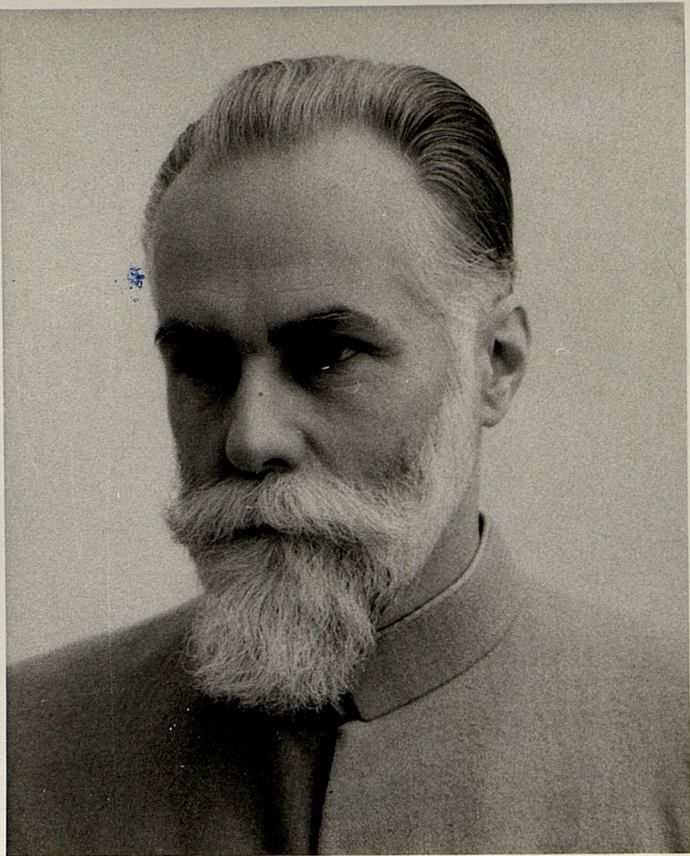


167(11)

1860-e

5603(4)

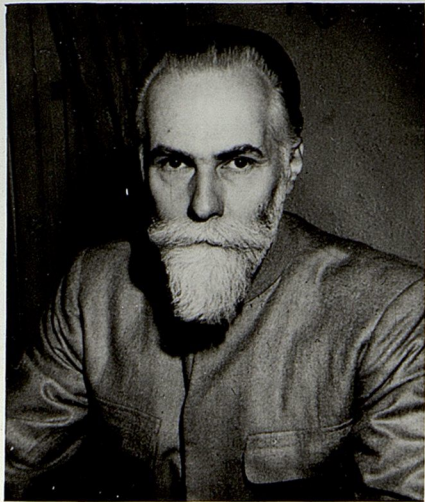




167 (8)

1860-C

~~5603 (13)~~

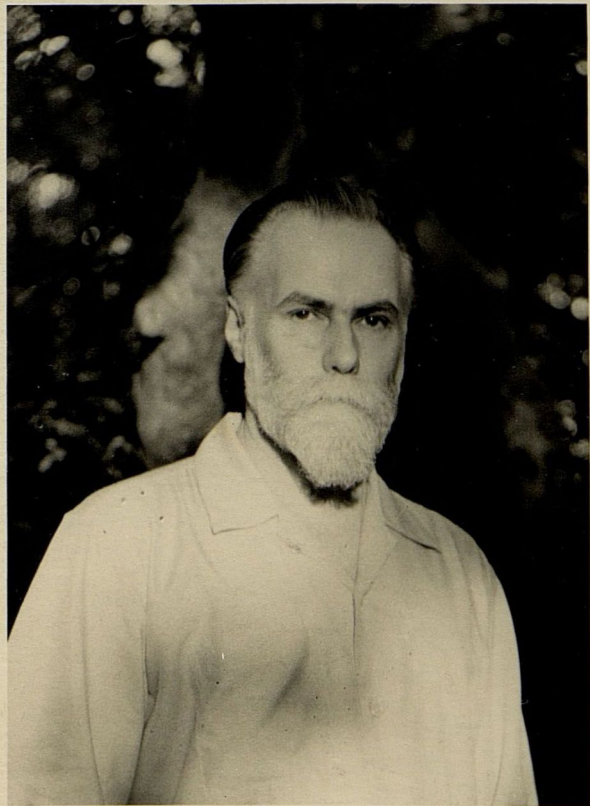




167 (27)

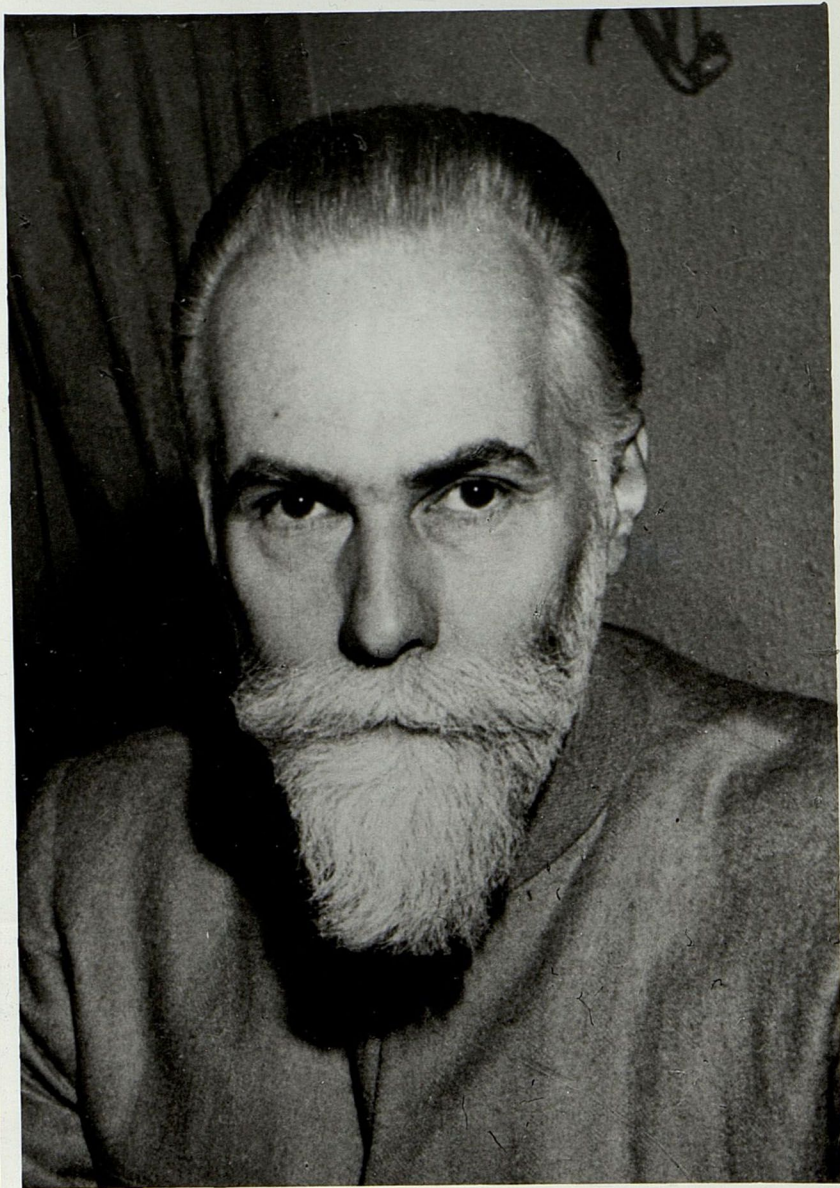
1960-e

~~5806/13~~



167 (29)

1960-e





167 (2)  
1960 ml

5603 (2)