



~~1310(1)~~

Voshna

1369(1)

Bajaura
Ruler

Velox

Velox



Gevaert

1369 (23)

Gevaert

—

Gevaert

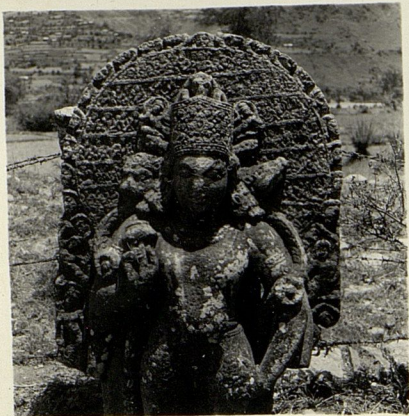
Gevaert



Gevaert
Gevaert
1369 (20)

1

Gevaert
Gevaert



①

1369(21)

1 1/2



1369(5)

9

1/1/2



1369(22)





1369(13)

1-10-12

or

1/2



○ large 1369(15)

1/2 ✓

1-10412

ROOM-NO 4



1369(17)



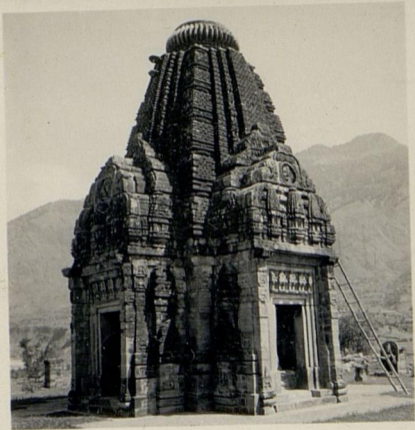
Gevaert

1369(12)

Gevaert

Gevaert

Gevaert



V369(18)

Agfa-Lupex



0

1369(14)

1-10412



1369(11)

1

Lupex - Lupex

Lupex



1369(10)

Velox

Velox

Velox



1369(9)



1369(8)

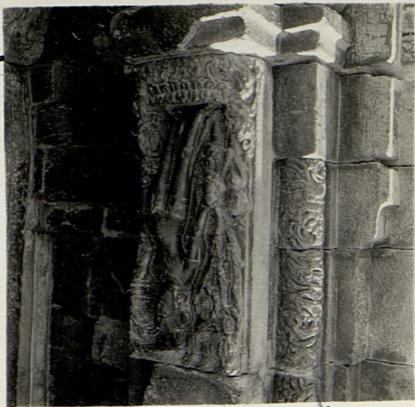


1369(7)



1369(6)

1-1/2



9

(1)

~~8768(15)~~

~~1302(15)~~

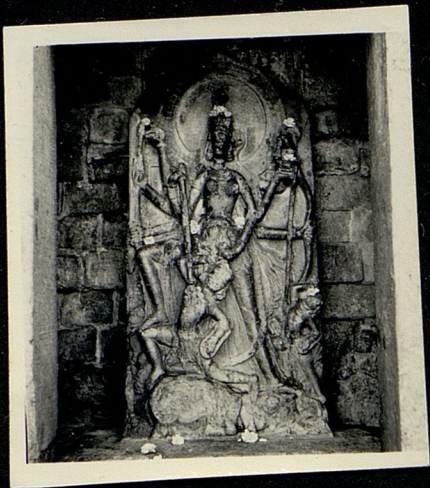
1369(4)





~~1302(13)~~
- Bagaura

1369(3)
Yamuna



~~7310(2)~~
1369(2)

Darya

Velox

Velox



1369(19)

1-12+12

5.



1369(16)



~~1310(12)~~

1369(27)

Vosnes
-

Velox

Velox

Velox

Velox

Velox

Velox

Velox


Velox

Velox



1310(13)

1369(28)

Verh. 

Velox

Velox

Velox

Velox

Velox

Velox



~~5589(17)~~

~~1302(40)~~

1369(33)



~~1302 (29)~~

1369 (29)

~~1768 25~~



~~106858~~

~~1302/35~~
1369 (30)



5589(2)

~~1302(30)~~
1369(31)



~~10170855~~

~~1302(34)~~

1369(32)



Debit
of Durga

~~1310(8)~~
1369(24)

Bajans
rule.



Donga

Bajaure

1310(6)

Ruler

1369(26)



Durga

1310 (7)

1369 (25)

Bajaura
Pulu



Weekly 190-14 P37
Culture Mylines

Bajama Temple

1310 (54)

1365 (41)

Baskets

Measures

£ 4 $\frac{1}{4}$ x 6

SIVA TEMPLE



9.

1310(46)
1365(40)

Weekly Sept 12 P. 30
Cultural Mysteries

Vishnu

Enclosure of Bojama Temple

The Mound is like on some
Rashmi sculptures.

It is broken at angles and the
legs are buried
in ground

The Prabha has small figures
in rows -

B 3 3/4 x 6

VISHNU

Chak

66



1310 (48)
1369 (39)

Surya. ? Bajana Temple
Enclome
Bab no part of
Temple



Vishnu
Bajaura Temple

~~1310 (48)~~
1369 (37)

(The face was damaged
and restored)



~~1310(45)~~ 1369(38)



"~~Jamuna~~" Ganga

1302(46)

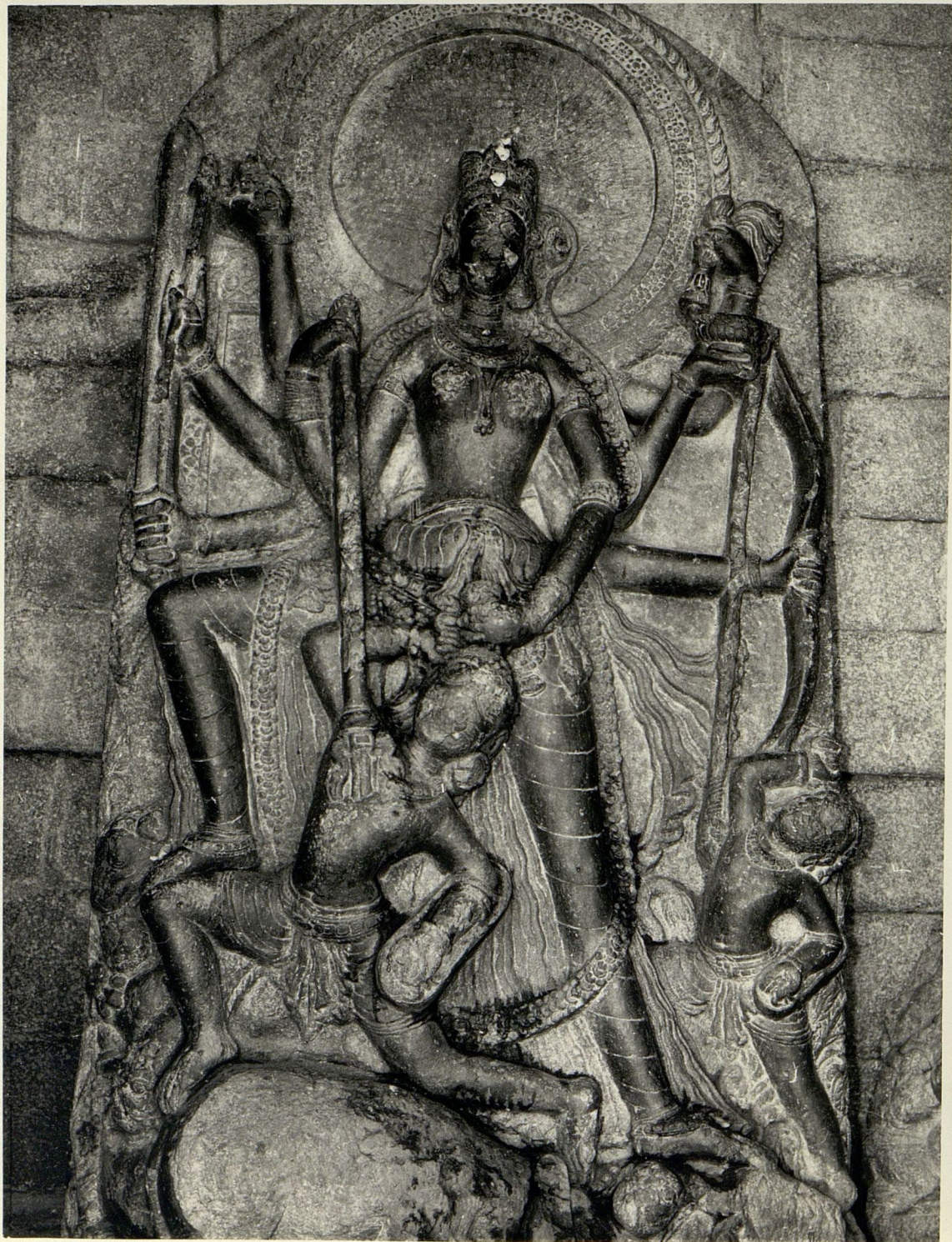
1369(35)

Bajaura temple

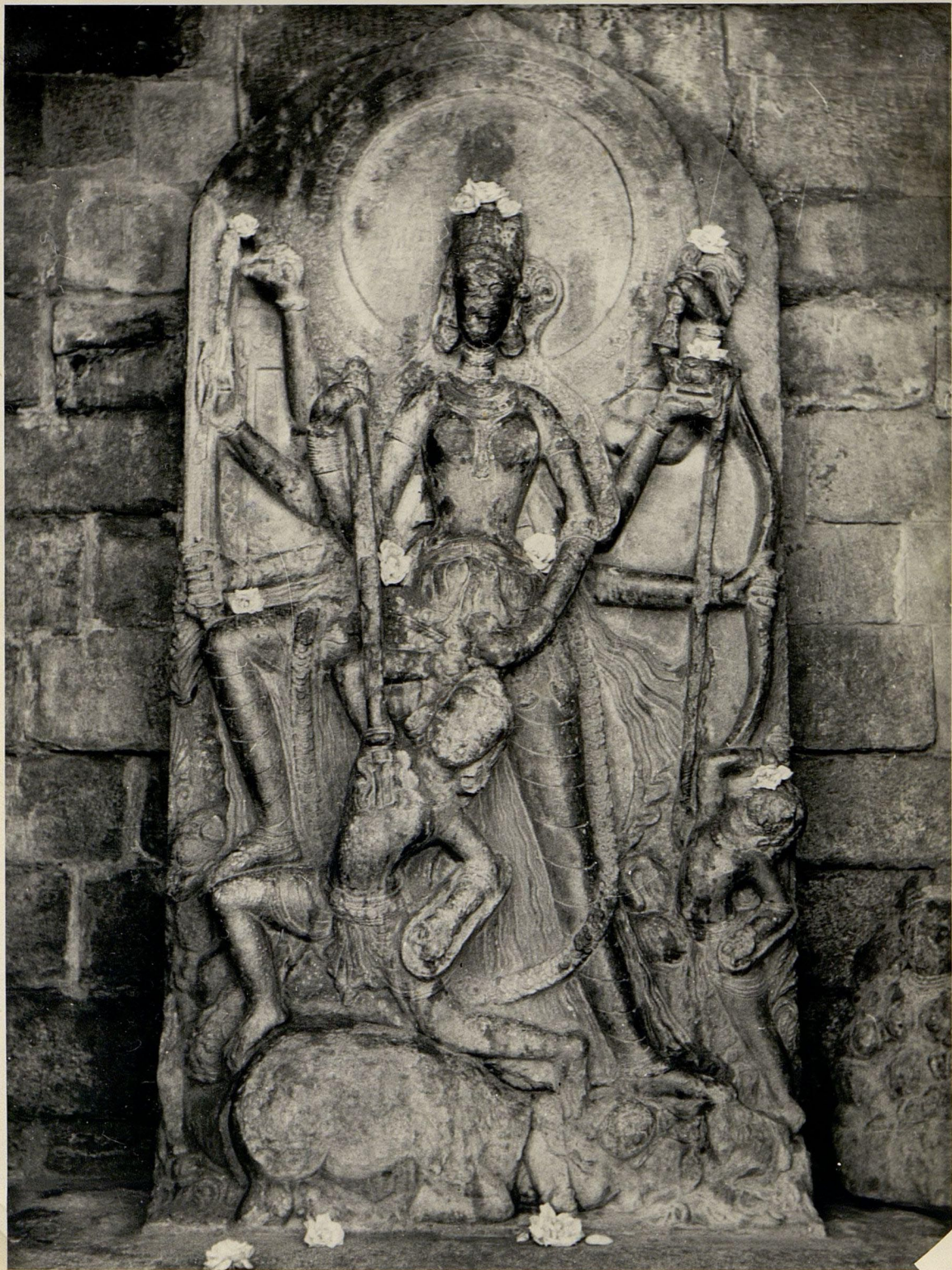
Ganga

left.

~~1369(35)~~



~~1310(30)~~
1369(36)



Darya

1310 (57) — S. Kovalev
1369 (34) —

Bojama Temple

photograph by
S. Kovalev