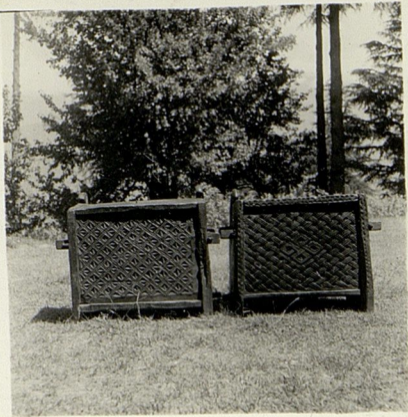




1365(7)

8



1365(9)

5



6

1365(14)



1365(13)

7





1365(12)

5

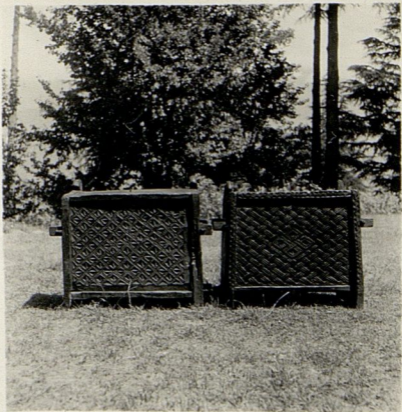


1365 (ii) 9



1365(10)

10



1365(8)

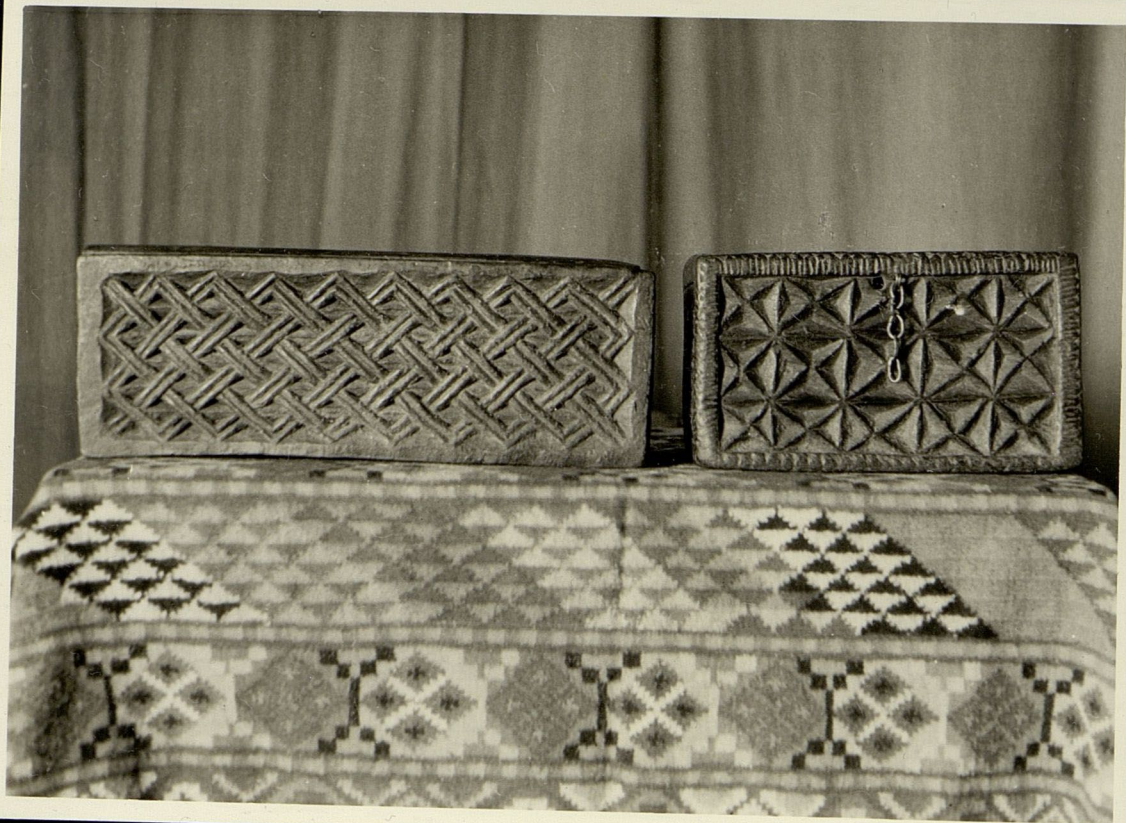
2





1365(6)

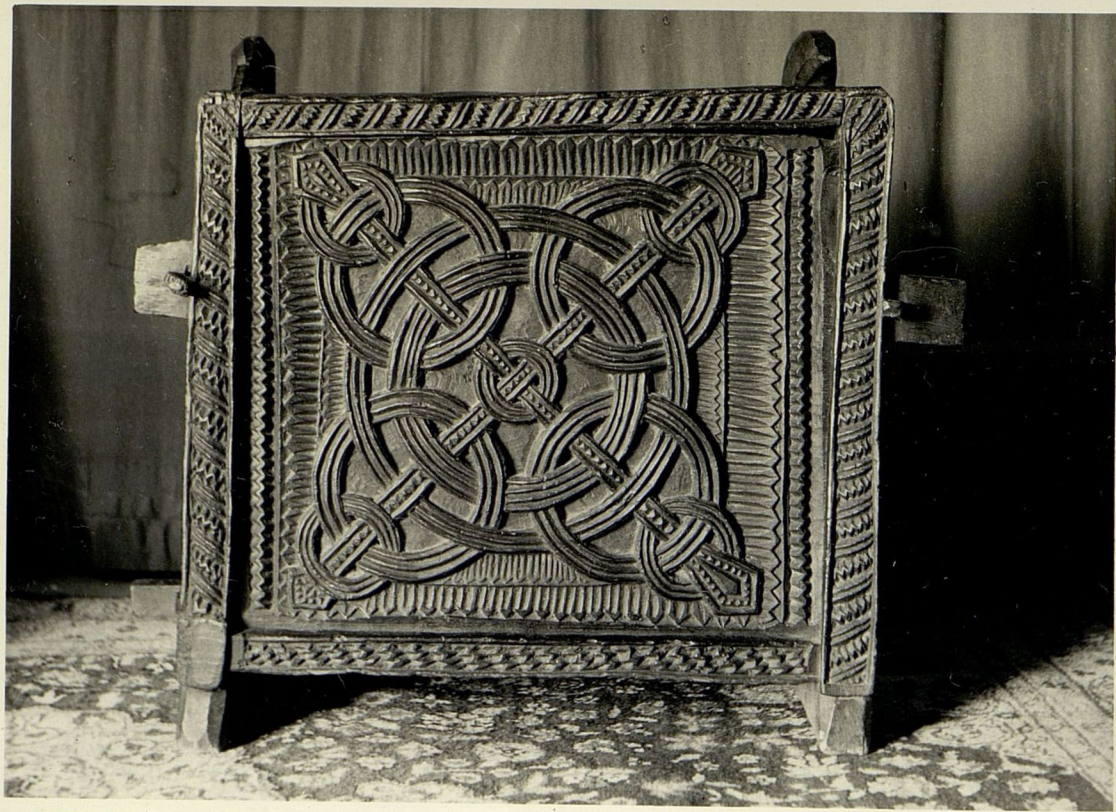
4



1365 (5)

~~1304 (5)~~

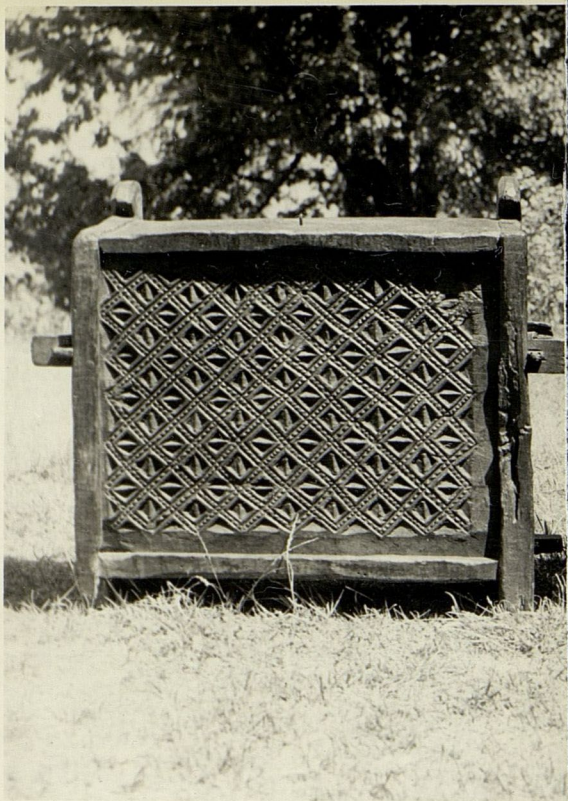
~~5591 (a)~~



1365 (3)

1304 (3)

~~2984 (7)~~

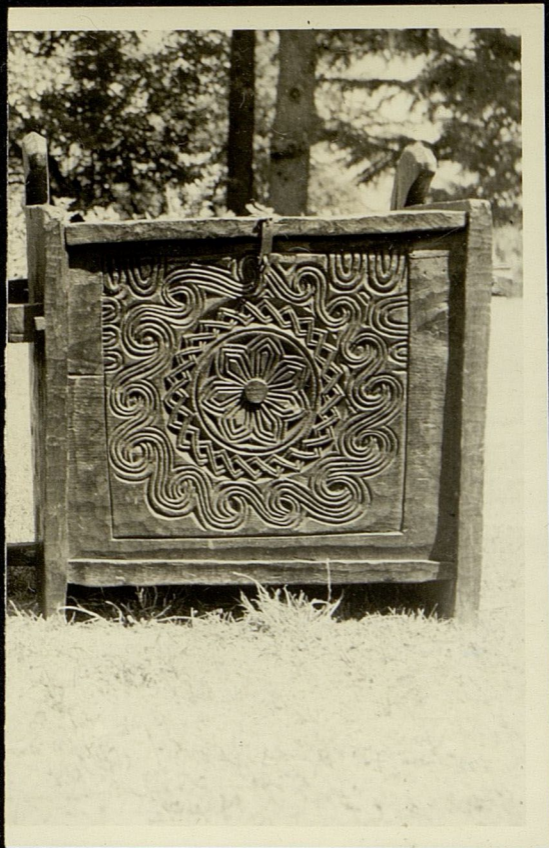


~~(1) 1655~~

~~1304(1)~~

1365 (1)

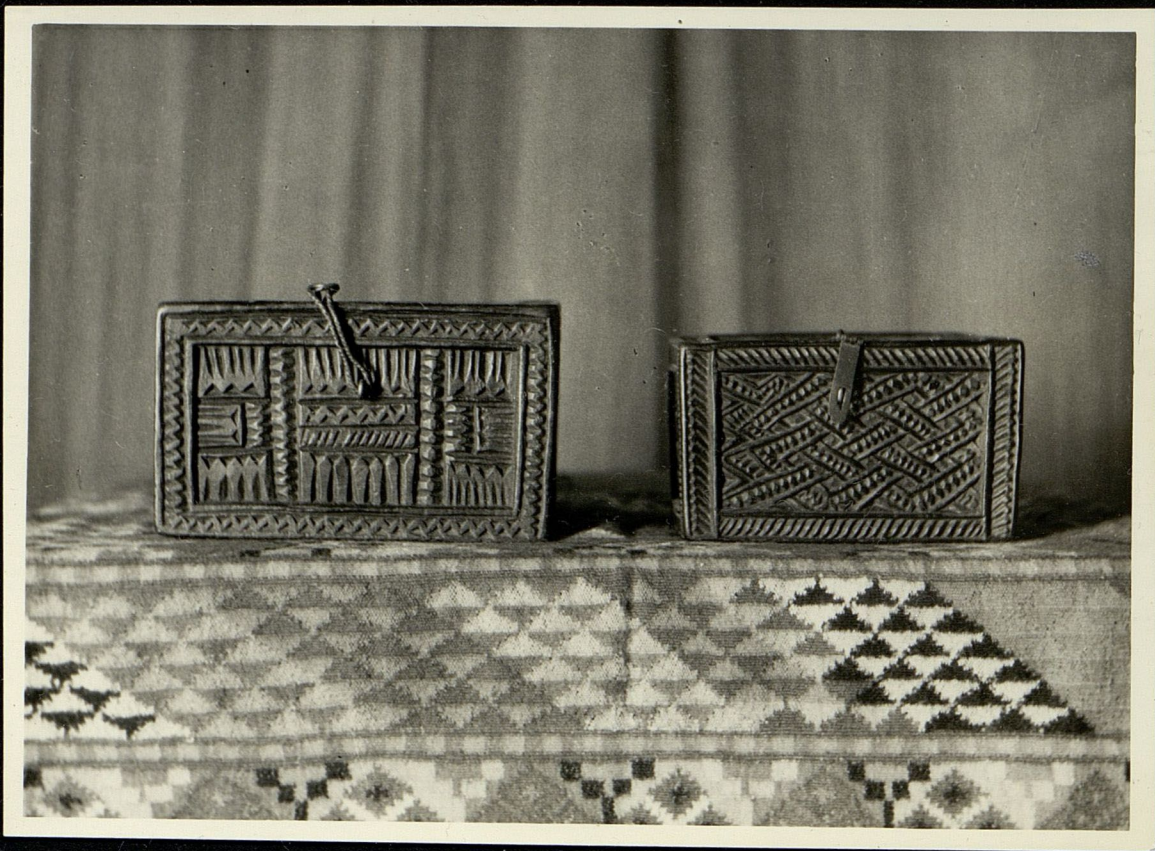




1365(2)

~~1304(2)~~

~~55-91(2)~~



1365(4)

~~1304(4)~~

~~5591(3)~~