

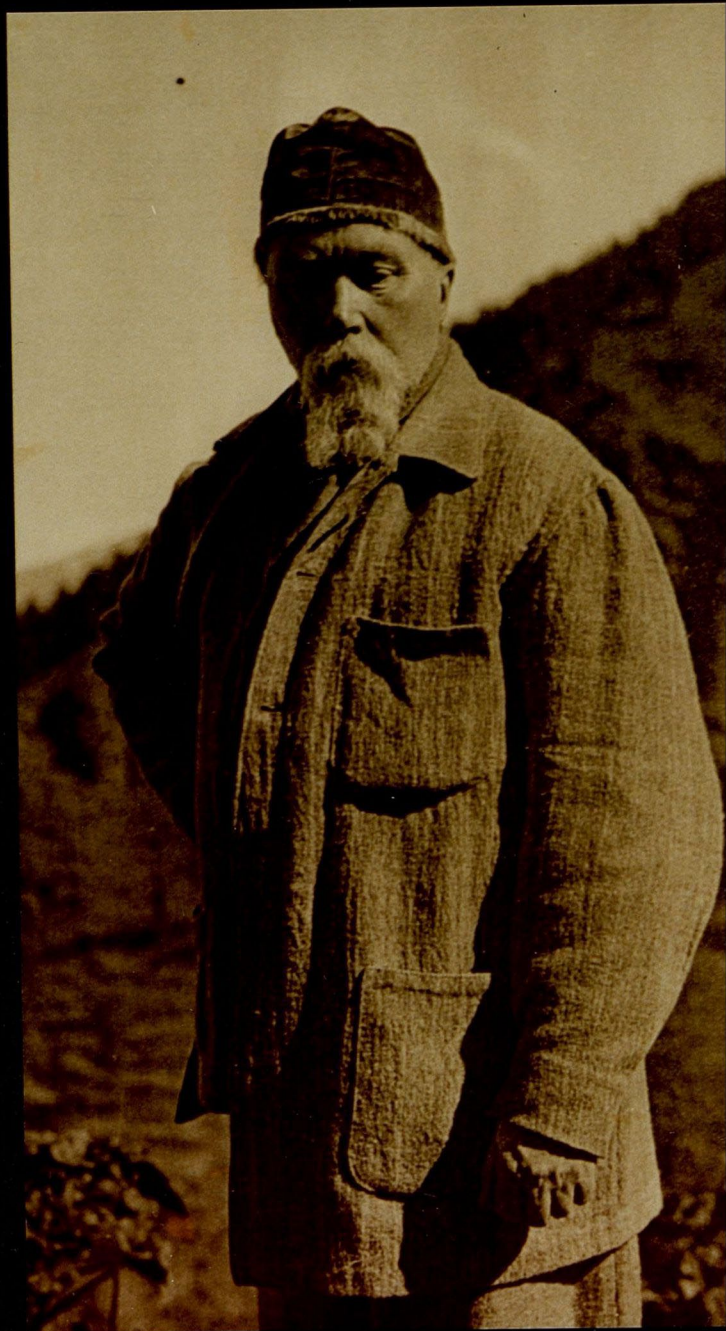


8(1)

PCU/NO. 28 / 56 248 0024 - 3 N 1 02

~~W/40~~ (1)
ou-3

7451 (1)



~~on 3 / 40 (2)~~

~~1457 (2)~~

8(2)



~~043 w 140-(3)~~

~~7457(3)~~

8(3)





8(5)

521416.26 40 248.0000 11112

7457

~~043~~ 140 (5)



8(6)

HC00101 267 02 245 0224 2 N 1 1 2

~~013~~ ~ 7451
~ 140 (6)