

1950
catalogue of bargains



Lennards
MAIL ORDER STORES
BRISTOL · ENGLAND

Fine British Values



M.O. 547

MO547. Gent's Tunic Shirt, fine silk-like quality Cotton Poplin, superbly tailored in large variety of neat, striped designs, in shades of **Blue, Grey** or **Fawn**, with contrasting stripes, and including two semi-stiff collars to match, finished with long sleeves and double cuffs. An excellent shirt for smart wear.

Collar sizes :
14½ to 17 in.

27/6



M.O. 507

M.O. 566

M.O. 548

MO566. Gent's Tunic Shirt, made from superior quality Cotton Poplin weave in attractive woven designs. A very excellent shirt, perfectly finished, complete with two collars with reinforced points. In neat contrasting stripes on grounds of **Grey, Blue** or **Fawn**.

Collar sizes : 14 to 17 in.

16/6

MO507. A very smart collar-attached shirt, which will give comfort and wear and neatness in appearance. Made from high grade cotton and printed in neat contrasting stripes on grounds of **Grey** or **Blue** only.

Collar sizes : 14½ to 16½ in.

16/11

MO548. Gent's Coat Style Shirt made from heavy quality fine grade soft cotton material with neat chalk stripe on self colour ground. Collar attached, long sleeves. In smart shades of **Blue, Fawn** or **Green**. Exceptionally hard-wearing, smartly cut and fast colours to sun and washing.

Collar sizes : 14½ to 17 in.

23/6

LENNARDS MAIL ORDER STORES · BRISTOL · ENGLAND

Shirts of High Quality



M.O.504

M.O.601

MO601. Superior quality khaki Poplin Tunic Shirt, for Officers' use in H.M. Forces. Superbly tailored. Complete with two collars with reinforced points for extra smartness, long sleeves with double cuffs. All seams oversewn and reinforced. A perfectly finished garment. Collar sizes from 14½ to 17½ in. **29/6**

MO504. A Super Heavy quality cotton Khaki Shirt. This collar-attached shirt is roomily made with reinforced shoulders and over-stitched at all seams. Finished with long sleeves, and button through cuffs. A splendid washing shirt, ideal for all sports or working conditions. Collar sizes from 14 to 16 in. **15/11**



M.O.513

MO513. Gent's Collar-attached Sports Shirt, made from fine quality cellular weave cotton, half sleeves and pocket. Shades of Blue, Green, Biscuit or White. An excellent washing garment. Sizes : Small Men's, Men's and O.S. **14/9**



M.O.528

M.O.561

M.O.562

MO528. Gent's Light-weight Art. Silk Sports Shirt, fine quality honeycomb weave with collar attached and half sleeves. In Ivory, Blue or Gold.

Sizes : Small Men's, Men's, O.S.

9/6

MO561. Gent's Sports Shirt, made from fine quality cotton in attractive honeycomb weave, with collar attached, and half sleeves. Colours : Maroon, White, Bottle Green or Saxe Blue.

Sizes : Small Men's, Men's, O.S.

7/6

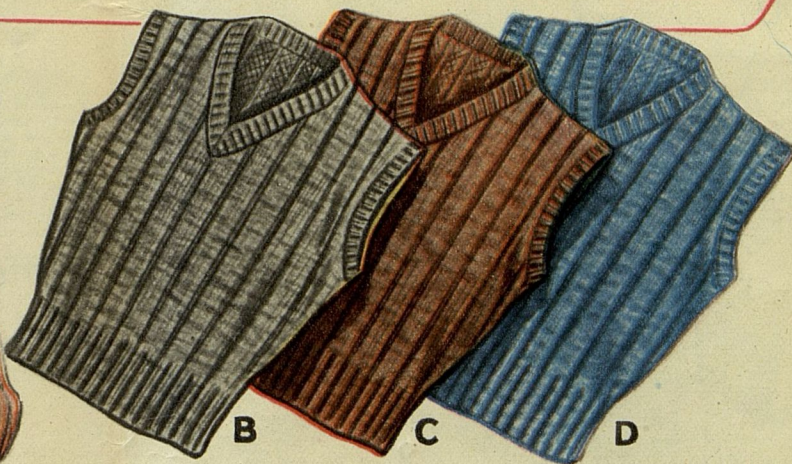
MO562. Gent's Sports Shirt, made from soft quality in novel Terry Towel finish, with collar attached and half sleeve. Colours : Grey, Saxe Blue, Green, Canary, Tan or Maroon, also White.

Sizes : Small Men's, Men's, O.S.

8/6

LENNARDS MAIL ORDER STORES · BRISTOL · ENGLAND

Pure Wool Knitwear FOR MEN



MO554. Gent's Slipover, knitted from good quality Scotch Wool in broad ribbed design with welted neck and waist, a really warm and good wearing garment in natural heather colours of **Grey, Blue, Fawn and Green.**

Men's size : **14/9**

Size O.S. : **16/3**



MO545. Gent's Slipover in fine quality ribbed wool with welted neck, armlets and waist. Superior quality all wool garment in smart colours of **Blue, Maroon or Canary.** Men's sizes. **15/-**

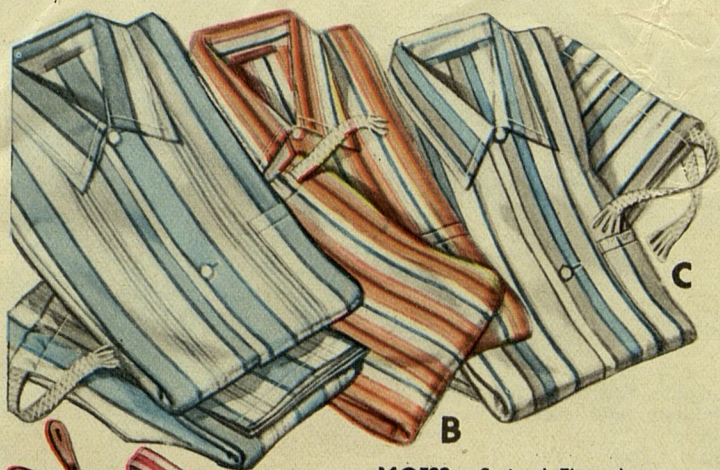
MO544. Gent's Wool Slipover in fine quality marl mixture. Finely knitted in athletic style with V neck and reinforced armholes and waist, in **Blue or Fawn** only.

Men's sizes. **15/9**

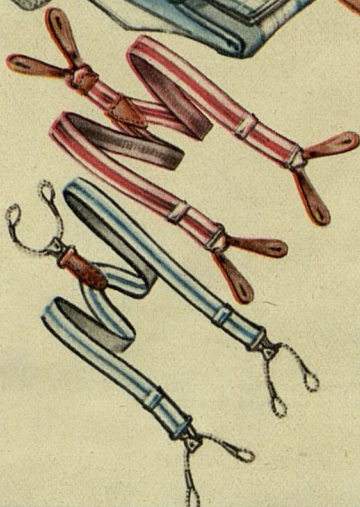
O.S. **16/6**



LENNARDS MAIL ORDER STORES · BRISTOL · ENGLAND

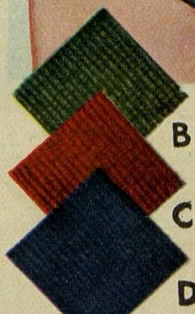


MO522. Striped Flannelette Pyjamas. Nicely tailored jacket and trousers in contrasting stripe effects, strongly sewn and well finished, soft and comfortable in wear.
 Sizes : S.M., M.'s and O.S. **15/-**



AC129. Gent's Braces, made from strong cotton covered elastic webbing with adjustable buckles and leather tabs. **Pair 4/6**

AC124. Gent's Cotton Web Braces with adjustable buckles and elastic ends. **2/6**



MO546. Gent's Bathing Trunks. Fine quality all wool athletic style, finished with belt loops and specially designed white cotton belt with patented clip fastener. Colours : Bottle Green, Maroon, Sky Blue and Navy. **15/9**

AC127. Gent's White Cotton Handkerchiefs. Full size made from good quality cotton and finished with hem-stitched border "A Dorma Product."
 Each **1/4**
 or 7/6 per half dozen.

MO523. Gent's high grade printed cotton Pyjamas in a variety of neat colourful stripes in Blue, Grey, Fawn, Green and Red. Smartly tailored and fully cut. Sizes : S.M., M.'s and O.S. **Pair 29/6**

LENNARDS MAIL ORDER STORES · BRISTOL · ENGLAND

FOR THE *Best-Dressed Man*



MO577. Gent's Lined Gloves. An English make glove made from good quality imitation hogskin, Tan shade. Warmly finished with fleecy wool lining.

Sizes: 7-9½. Pair **15/-**



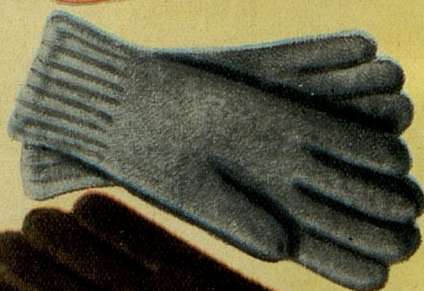
MO578. Gent's Unlined Gloves. Best English make in strong quality Brown nappa, strongly stitched and bound. With button fastening.

Sizes: 7-9½. Pair **16/6**



MO579. Gent's Imitation Putty Hogskin Gloves, pull-on style. Fine quality dress glove of best English make in realistic imitation of hogskin.

Sizes: 7-9½. Pair **12/6**



MO535. Boy's All Wool Gloves. Made from soft quality knitted wool, hard wearing and warm, in heather shades of Brown and Grey.

Pair **3/6**



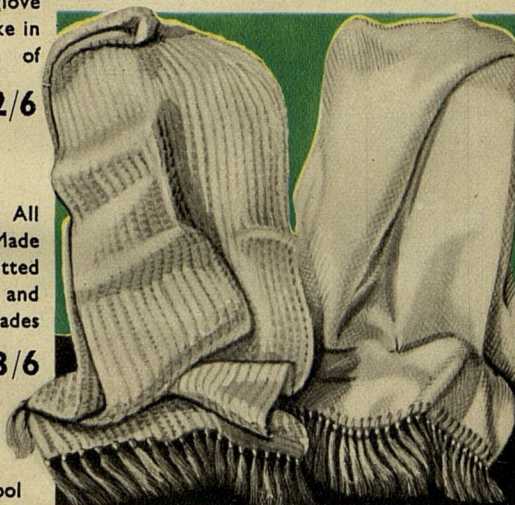
MO534. Men's Wool Gloves. All wool Scotch knit gloves in soft quality, shades of Brown and Grey.

Pair **4/2**



MO580. Printed Squares. A really smart scarf, measuring 36 in. square, made from soft quality Rayon, printed in attractive "Horse Head" design on grounds of Maroon, Navy and Gold. Also available in attractive Paisley designs.

Each **10/6.**



MO559. Gent's White Art. Silk Scarf, in attractive knitted weave, measuring 48 in. long and 11 in. wide, finished with tasselled fringe.

Each **7/6**

MO575. Gent's White Dress Scarf, made from fine quality circular knitted art. silk, 48 in. long and 16 in. wide. A warm and useful scarf.

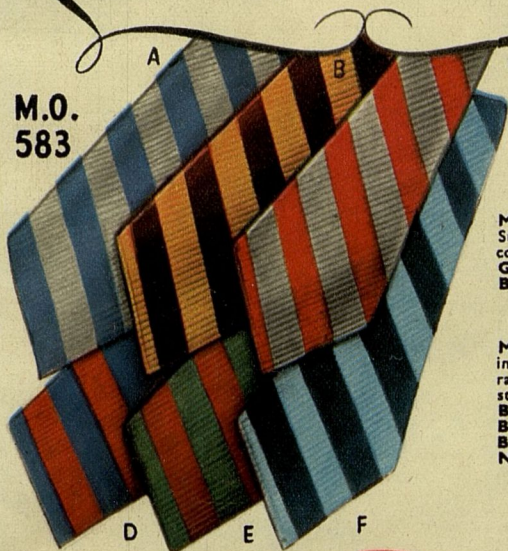
Each **9/6**

LENNARDS MAIL ORDER STORES · BRISTOL · ENGLAND

Superior Quality

- LOWEST PRICE

M.O.
583



M.O. 512. Candy Stripe Tie in smart combinations of Blue, Green, Fawn or Brown. Each 5/6

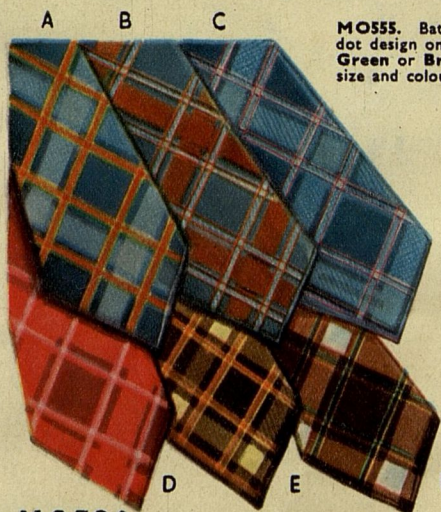
M.O. 582. Club Tie in heavy quality rayon, contrasting stripes of Maroon, Black and Gold, Black and Scarlet, Black and Royal, Navy and Silver. Each 4/6

M.O. 583. Gent's Club Tie in smart contrasting stripes made from good quality art. silk. Blue/Silver, Maroon/Silver, Brown/Gold, Navy/Red, Navy/Sky, Green/Red. Each 3/11



M.O. 555

M.O. 555. Batwing Bow Tie in smart polka dot design on Navy, Light Blue, Maroon, Green or Brown backgrounds. State neck size and colour required. Each 4/6



M.O. 584

M.O. 584. Superior Quality Tartan Tie, gay colours in attractive designs of Blue/Red, Maroon/Red, Maroon/Green, Brown/Fawn. Each 6/6

M.O. 540. Medallion Tie in twill weave art. silk, neat design on grounds of Red, Blue or Gold. Each 3/6

M.O. 509. Smart Brocade Tie in superior quality material and lined with strong canvas for extra wear and neat appearance. Colours of Blue, Brown and Maroon. Each 6/6

M.O. 557. Fashionable Tie in good quality plain colour art. silk, Maroon, Green, Red, Navy or Royal Blue. Each 3/6

M.O.
509

M.O.
512

M.O. 540

M.O. 557

LENNARDS MAIL ORDER STORES · BRISTOL · ENGLAND

Smartest styles for leisure wear



MC427. Gent's Sports or Lounge Jacket, made from soft quality wool cloth in shades of **Lovat** and **Heather**. A smartly tailored jacket, very good fitting. **45/-**



MC426. A. Gent's Sports Jacket in very attractive check tweed, soft quality texture. **Blue/Green** small check with contrast **Brown** over-check. A very smart coat for leisure wear. **47/9**



MC445. Gent's Sports Jacket in soft quality light-weight Donegal tweed. A very smartly tailored coat, in attractive shade of **Blue/Green** or **Fawn**. Lined Art. Silk. **45/-**



MC447. Gent's Sports Jacket, in light-weight hopsack weave. **Medium Grey** shade with **Black** and **White** fleck. A very attractive coat. Also made from the same material in **Brown** and **Fawn** shade. Lined Art. Silk. **44/-**



MC404. This Sports Jacket is of a material indistinguishable from genuine Harris Tweed in a rich **Rust-Brown** shade. Good quality Yorkshire tweed. Lined Art. Silk. Very special price of **56/6**



MC426. B. Gent's Smartly styled Sports Jacket, in neat **Brown** check with contrast over-check pattern. A well-tailored garment, lined with Art. Silk. **47/9**

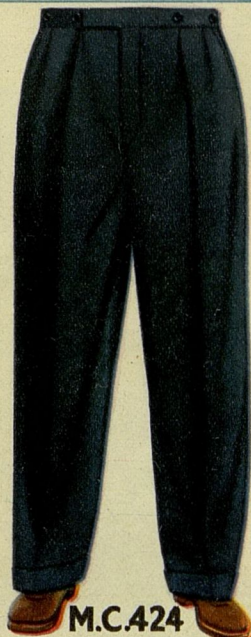
LENNARDS MAIL ORDER STORES · BRISTOL · ENGLAND

Trousers for all occasions



M.C.416

MC416. Men's Superior Quality Medium Grey Flannel Trousers, fully cut with adjustable buckles at waist, extended waist band and belt loops. Perfectly finished with two side pockets and buttoning hip pocket.
 Sizes : 30 to 42 in. waist.
 Leg sizes : 28 to 32 in.



M.C.424

MC450. The ever-popular chalk-stripe worsted flannel trouser. A very smartly cut trouser, finished with adjustable waist buckles and extended waist band. Complete with two side pockets, hip and cash pockets. A very superior garment.
 Sizes : 30 to 42 waist.
 Leg sizes : 28 to 32 in.

M.C.450

55/6

MC424. Men's Hard Wearing Trouser, made from extra strong Admiralty Navy Serge. Fully cut and strongly sewn. An ideal working trouser finished with pleated waist, two side pockets and hip pocket.
 Sizes : 30 to 42 in. waist.
 Leg sizes : 28 to 32 in.

29/6



M.C.429

MC430. Strong Hard-Wearing Working Trousers. Made from good quality Derby Tweed in a serviceable Dark Grey. Ideal working trouser which will give long and useful service. Fitted with reinforced waist band, brace buttons, two side pockets and hip pocket.
 Sizes : 30 to 42 waist.
 Leg sizes : 28 to 32 in.

28/6

MC429. Men's All Wool Hopsack Trousers. A very smart and useful trouser, which will give excellent hard wearing service. Made from newest of materials, in an attractive Lovat shade. Perfectly tailored, with adjustable buckles at waist, extended waist band and belt loops, two side pockets and buttoning hip pocket.
 Sizes : 30 to 42 in. waist
 Leg sizes : 28 to 32 in.

35/-

M.C.452



MC452. Superior quality All Worsted Flannel in attractive new Sand shade. An ideal trouser for all occasions, fitted with adjustable elastic waist band and extended waist band. Finely tailored, finished with pleated front, side and hip pockets.
 Sizes : 30 to 42 in. waist.
 Leg sizes : 28 to 32 in.

49/6

MC451. Gent's solid Worsted Sport Trouser in Medium or Silver Greys. Superbly tailored from a beautiful material which will give every satisfaction in wear. Fully cut and finished with pleated waist, adjustable buckles and extended waist band. Two side pockets, hip pocket and cash pocket.
 Sizes : 30 to 42 in. waist.
 Leg sizes : 28 to 32 in.

52/6

M.C.451



LENNARDS MAIL ORDER STORES · BRISTOL · ENGLAND



MC446. Gent's Two Piece Lounge Suit. Made from highest grade British all-wool worsted. Smartly cut in double-breasted style. Suitable for business or pleasure. The Jacket is finished with special light-weight rayon twill lining, breast pocket, two side and inside pockets. The trousers are smartly cut with pleated extended waist-band and belt loops. In shades of Grey/Blue, Fawn, Dark Brown, Dark Blue/Grey as illustrated.

£6/15/0

MC432. Gent's Two Piece Suit in double-breasted style. Tailored from solid Worsted Grey Flannel with smart chalk stripe. Ideal for business or leisure. Smartly tailored. Jacket well finished with Art. Silk lining. Trousers finished with sports style waist and extended waist band.

£6/12/6

MC448. Gent's Double Breasted Lounge Suit, made from superior quality British all-wool Worsted. Superbly cut with built shoulders and stylish finish. The Jacket is lined with light-weight rayon twill and finished with breast, two side and inside pockets. The trousers are fully cut with sports style pleated waist and extended waist band. Two side and hip pockets. In shades of Fawn, Grey and Brown Bannockburn weave.

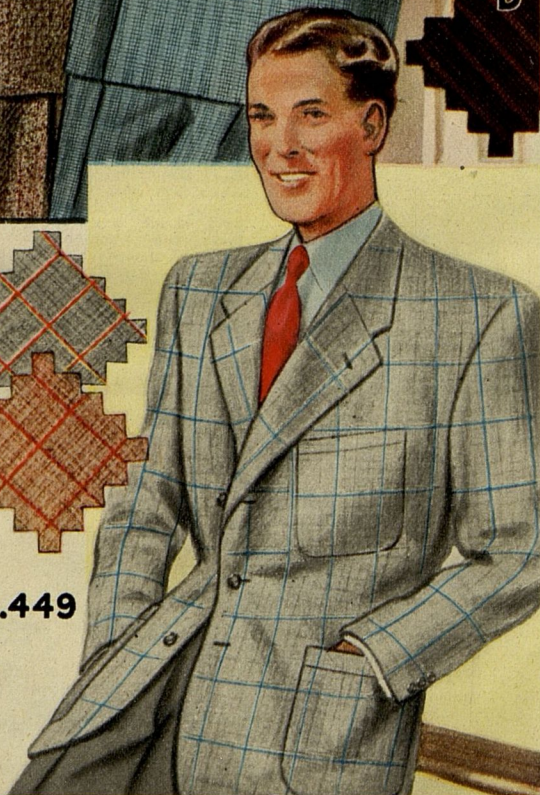
£5/10/0

MC449. Sports Lounge Jacket specially styled for light weight comfort from high quality all wool material, pleasing overcheck pattern on light natural grounds of Grey or Fawn. This Jacket is superbly cut and finished with shoulder and sleeve linings of high quality rayon material, with all seams overstitched to prevent fraying. Note the smart patch pockets.

£3/0/0

SEND MEASUREMENTS WHEN ORDERING AS DETAILS ILLUSTRATED IN SUPPLEMENT TO THIS CATALOGUE

M.C.449



LENNARDS MAIL ORDER STORES · BRISTOL · ENGLAND



M.C.431



M.C.438



M.C.433



M.C.436

MC436. Gent's single breasted 2-Piece Suit, cut on latest London style, and made from smooth finish good quality Yorkshire tweed. Jacket Art. Silk lined. Trousers finished with extended waist band. A hard-wearing and well-made suit. **£5/16/6**

MC431. Gent's High Grade Navy Serge Suit, complete with vest, smartly tailored and good fitting. Coat lined with Art. Silk material. Trousers fitted with extended waist band. Wonderful value. **£7/12/6**

MC438. Gent's Raglan Style Slip-on Tweed Overcoat. A full fitting coat made from good quality warm wool tweed in natural fleck herringbone design, with side pockets. Fully lined Art. Silk. **£4/8/6**

MC433. Gent's Raglan Style Slip-on Tweed Overcoat in medium Blue/Green herringbone. Smart Style, finished with raised seams and side pockets. Fully lined Art. Silk. A good quality coat for the low price of **£3/9/6**

LENNARDS MAIL ORDER STORES · BRISTOL · ENGLAND



**MS
419**



**MS
421**



**MS
424**



**MS
420**



**MS
422**



**MS
423**

MS419. Gent's Monk Style Tan Leather Shoe, pebble-grained, finished with instep strap and buckle and heavy crepe rubber sole and heel. A particularly comfortable and sturdy shoe for all occasions.

Per Pair **25/11**

MS421. New Improved Style Moccasin Shoe, for Gents, in smooth brown leather, laced front and finished with two straps and buckles. This extra quality Goodyear welted shoe has through crepe rubber sole and heel. Excellent value.

Per Pair **46/6**

MS424. Gent's Stylish Derby Shoe, in rich quality Ice Calf, with machine-sewn front and punched quarters. This hard-wearing shoe is finished with stout solid leather sole and heel and will give endless hard wear. Special value.

Per Pair **41/9**

MS423. Comfortable Derby Style Shoe for Gents, in **London Tan** shade, pebble-grained leather, finished with stout crepe rubber sole and heel. A comfortable shoe with enduring wear.

Per Pair **31/6**

MS420. Gent's Fancy Style Derby Shoe, with ventilated front, made from fine quality Ice Calf in natural shade. A shoe designed to give both comfort and ease in all climates, combined with exceptionally hard wear. Finished with one-piece crepe rubber sole and heel.

Bargain price. Per Pair **30/6**

MS422. Fine quality Gent's Derby Style Shoe, in tan crocodile-grained calf leather, finished with instep strap and buckle. Goodyear welted and through crepe rubber sole and heel. A very stylish and comfortable shoe.

Per Pair **40/11**

LENNARDS MAIL ORDER STORES · BRISTOL · ENGLAND

MS412. Gent's All White Brogue Shoe, in good quality grained leather, which can be washed. Finished with solid leather English sole and heel. A useful shoe for sport and leisure wear.

Per Pair **33/6**

MS408. Gent's London Brogue Style Shoe in combination leathers of smooth tan willow and suede, finished with lightweight English leather sole and heel. A smart and dressy shoe at a low price.

Per Pair **29/6**

MS410. Very Smart Gent's Shoe in Derby style, with fine quality tan grained leather uppers, finished with white saddle. Special quality hard wearing English leather sole and heel. A comfortable shoe which will give full satisfaction.

Per Pair **32/9**

Also available with Crepe sole and heel at same price.

MS411. Gent's Neatly Styled Sports Shoe in combination of tan smooth leather and white suede finish. An ideal holiday and sports shoe. Exceptional value.

Per Pair **26/9**

MS407. Gent's Combination Brogue Shoe designed on smartly shaped last in smooth tan and white leathers. A lightweight comfortable shoe, designed for sport and leisure wear. Keenest value.

Per Pair **29/6**

MS409. Gent's London Style Brogue Shoe in combination leathers of smooth tan and white. Specially designed for leisure and casual wear. Serviceable shoe, finished with lightweight solid leather sole and heel.

Per Pair **29/6**



LENNARDS MAIL ORDER STORES · BRISTOL · ENGLAND



MS
436



MS
440



MS
434



MS
441



MS
435



MS
439

THE FAMOUS "MENTONE" SHOES FEATURED BY LENNARDS

Lennards have specially introduced these Men's High Grade Shoes, with the famous brand mark of "MENTONE," which stands out for their distinctive styling and exceptionally high quality, both in materials and manufacture. These Shoes are all made on the best principles of Hand Craft Shoe Making. The six models shown are all of the same price—52/6 per pair, and are fully guaranteed by Lennards to give full satisfaction in wear.

MS434. Gent's fine Tan Grained Monk Shoe, medium-weight leather soles and heels. Attractive, smart, well-fitting shape. A shoe for everyday wear.

Per pair **52/6**

MS440. Gent's Tan Sports Butt Ski Shoe, Derby pattern, finished harness, stitched apron and quarters, blind eyelets, storm welt. Heavy leather soles and heels. Smart comfortable shape. An all-the-year round shoe.

Per pair **52/6**

MS436. Gent's City-weight Black Oxford Shoe. Super quality soft box leather uppers, finished with bevelled edge leather soles for lighter appearance. Very smart fitting. This same shoe is also available in Brown.

Per Pair **52/6**

For the man who needs a stout and heavy shoe, "MENTONE" have produced an attractive roomy shape, similar to the illustration **MS436**, but made with heavy waterproofed leather soles and leather heels.

(Not illustrated) Per Pair **52/6**

MS441. Gent's Smooth Tan Semi-Brogue Oxford Shoe, made from superior selected smooth leather. A very comfortable and well-fitting shoe, suitable for outdoor and country wear. Leather soles and heels.

Per Pair **52/6**

MS435. Gent's Brown Suede Full Brogue Oxford Shoe. An attractively styled shoe with wing cap, flat eyelets and medium-heavyweight sole and heels. A shoe for the well-dressed man.

Per Pair **52/6**

MS439. Gent's Tan Grain Full Brogue Oxford Shoe. Made from rich grain old English Tan leather with heavy leather soles and heels. A smart roomy shape for town or country.

Per Pair **52/6**

LENNARDS MAIL ORDER STORES · BRISTOL · ENGLAND

MS
432



MS
429



MS
134



THE NEWEST AND MOST UP-TO-DATE STYLES FOR MEN

MS432. Gent's Derby Shoe in reliable quality **Tan** grained leather. Specially designed with full-fitting "BULNOZE" square-shaped toe. Selected quality English leather soles and leather heel, finished with rubber top-pieces.

Per Pair **28/6**

MS429. Gent's Fancy Derby Style Shoe, in smooth **Brown** leather, built on easy-fitting last with "BULNOZE" square toe. Heavy quality selected leather sole and heel. Exceptional value.

Per Pair **28/6**

MS134. Gent's Super Quality Sports Shoe. Made from selected smooth **Brown** leather in rich chocolate shade, and finished with special instep strap for extra support. Especially chosen by golfers, etc. Special features are the patented cork insole and shock-stop rubber sole and heel. Special value.

Per Pair **42/6**

MS430. A completely new design of Gent's Monk Shoe, made from **Russet**-shade fine grained leather, with wrap-over front and adjustable strap. Especially designed for smartness and comfort. Finished with crepe rubber sole and heel. A high-grade shoe.

Per Pair **43/6**

MS433. Gent's All-Leather Casual Shoe. Beautifully designed from London **Tan** pebble-grained leather of high quality and finished with English leather sole and heel. This casual shoe will give long service and complete comfort in wear.

Per Pair **33/6**

MS431 Gent's Casual Shoe, very attractively designed and made from soft quality pebble-grained leather in the new **Red-Tan** shade, finished with **Dark-Brown** leather collar and saddle. Sole and heel of best English leather. Easy on feet.

Per Pair **38/9**

MS
430



MS
433



MS
431



LENNARDS MAIL ORDER STORES · BRISTOL · ENGLAND



W.S.258

WS258. Ladies' Slipper. Attractively styled moccasin shape, finished with leather bow on front. Lined with warm fleecy material and finished with leather sole and 1½ in. wood heel with leather top-piece. In **Blue** only. Exceptional value.

Per Pair **15/3**



W.S.257

WS257. Woman's Felt Slippers. **Camel** shade. An old favourite. Extremely comfortable in wear, with soft warm fleecy lining, turn-over collar and leather through sole and heel. Wonderful value.

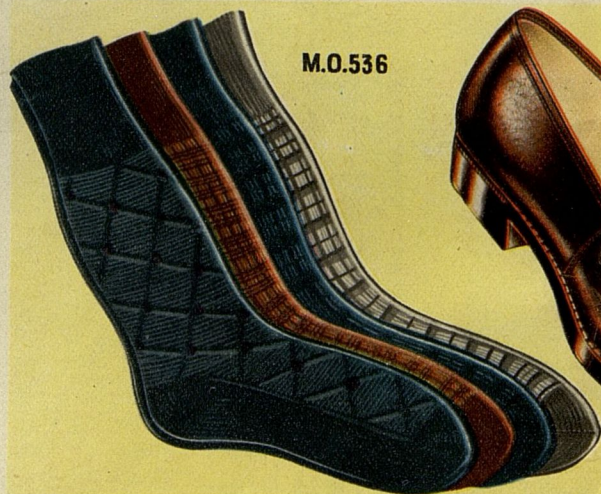
Per Pair **8/9**



W.S.259

WS259. Boudoir Slipper, beautifully styled from soft quality leather in delightful shade of **Red**. Finished with generous fur collar in **Pale Pink**. Leather sole and smart styled heel.

Per Pair **18/6**



M.O.536

MO.536. Men's Half-Hose, all wool with neat patterns woven in artificial silk in a delightful variety of stripes, checks and other fancy effects, **Blue, Gold and Brown**.

Per Pair **4/6**



M.S.465

MS465. Gent's Tab-front Slipper. Good general purpose slipper or house shoe, made from **Brown** or **Black** grained leather, with solid leather flexible sole and leather heel. Lined with soft fleecy material.

Per Pair **12/6**



M.S.464

MS464. Gent's Grecian Style Slippers. Made from high quality soft finished leather uppers, with light-weight solid leather heel and sole. Carefully designed for the maximum amount of comfort. In **Black, Brown or Red**.

Per Pair **14/9**

LENNARDS MAIL ORDER STORES · BRISTOL · ENGLAND

MS.458



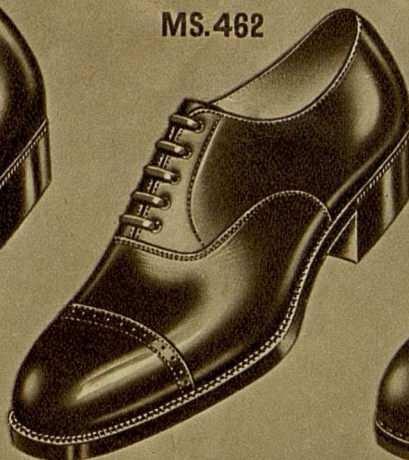
MS458. Gent's Neatly Styled Oxford Shoe, with uppers of selected quality smooth Deep **Tan** leather and medium-weight English leather sole and heel. A very hard-wearing shoe. Attractively designed.

Per Pair **43/6**

The above Shoe made also in smooth **Black** leather, as description.

Per Pair **43/6**

MS.462



MS462. Gent's extra fine quality Glacé Kid Oxford Shoe, in **Black**. This superb shoe is specially designed for the connoisseur of footwear. Finished with medium-weight English leather sole and heel. A most comfortable shoe in wear.

Per Pair **42/6**

MS.461



MS461. Gent's **Brown** Oxford Styled Shoe, of good quality smooth leather. Designed on special easy-fitting comfort last and finished with patent "Wonder-grip" non-slip sole and heel. This extra quality shoe is offered at the absurdly low price of

Per Pair **28/9**

MS.463.B



MS463. Lennard's Famous "Ortho" Shoe. For many years this shoe has been worn by foot sufferers because of its special design and manufacture on orthopaedic lines. Made from selected soft quality leather and finished with medium-weight leather sole and heel. Obtainable in both **Black** and **Brown**. Narrow, medium and wide fittings.

Per Pair **40/11**

MS.460



MS460. Gent's Patent Leather Oxford styled Shoe, made from carefully selected best quality material on new, smart, easy, City last. Suitable for dress-wear or dancing. A high-grade shoe.

Per Pair **36/11**

MS.457



MS457. Gent's Medium-Weight Derby Shoe, made from selected fine-grained leather, in **Black** only. Finished with studded rubber soles and heels. A shoe for all-weather service and comfort.

Per Pair **29/6**

LENNARDS MAIL ORDER STORES · BRISTOL · ENGLAND



MS405. Gent's Derby Shoe, combining all the characteristics of London Brogue style. Made from high-grade smooth **Brown** leather and finished with studded rubber sole and heel. An ideal sports and country shoe. **33/6**

DON'T FORGET TO
STATE SIZE REQUIRED

MS406. Gent's Derby Shoe, smartly styled Norwegian apron front, in mellow **Brown** pebble-grained leather. Finished with through crepe sole and heel. A good all-weather shoe. **33/6**

MS401. Gent's Full Brogue Shoe in rich antique shade of **Brown**. Fine-grained leather finished with medium-weight solid leather sole and heel. An exceptionally smart and attractive shoe, suitable for wear in town and country. **34/6**

MS170. Gent's Apron-fronted Derby Styled Shoe. Uppers from soft-quality smooth **Brown** leather, soles of medium-weight special high-grade quality leather. Heel finished with non-slip rubber top-pieces. An ideal walking shoe. **28/9**

Also in **Black**, as above description.

28/9

MS404. Gent's Ski Styled Shoe, elegantly designed from first-quality rich **Brown** leather and finished with solid leather English sole and heel. Fitted with non-slip rubber top-pieces. **31/11**

MS403. Gent's Monk Shoe, especially designed for foot comfort and made from smooth **Red-Brown** leather. A well-made shoe, finished with best quality leather sole and heel, fitted with non-slip rubber top-pieces. Easy on the feet. **27/6**

Wonderful value.

Also in **Black**, as above description.

27/6

LENNARDS MAIL ORDER STORES · BRISTOL · ENGLAND



MS414. Gent's Smart Combination Shoe, in Semi-Brogue Style. Made from selected smooth **Tan** willow calf and **Brown** suede leathers. Medium-weight English leather sole and heel. A high quality shoe at a moderate price. **41/6**

MS415. Gent's All Suede Derby Style Shoe, in rich **Russet** shade of selected quality materials, finished with medium-weight English leather sole and heel. An exceptionally useful all-purpose shoe for the low price of **28/11**

MS418. Gent's Smart Derby Shoe, in combination leathers of smooth **Tan** willow and **Brown** suede. A very dressy shoe, with light-weight sole and heel, finished with non-slip rubber top-pieces. An attractive and comfortable shoe for the low price of **36/6**

MS417. Gent's Full Brogue Shoe, in a rich, **Brown** suede. This is a beautiful high-quality production, with medium-weight English leather sole and heel. **29/6**

MS413. Gent's Oxford Style Shoe of very smart combination design, smooth **Tan** willow and **Brown** suede leather. Medium-weight English leather sole and heel. A high-grade reliable shoe. **35/11**

MS416. Gent's Derby Style Shoe, with Ski pattern front. Combination leathers of fine grain **Tan** and rich **Brown** suede. Non-slip studded rubber sole and heel. A stout yet stylish walking shoe. Very reliable in wear. **30/6**

LENNARDS MAIL ORDER STORES · BRISTOL · ENGLAND



MS426. Gent's Derby Style Sandal. Made with soft, pliable uppers, adequately ventilated for comfort. Finished with light-weight leather sole and heel. Exceptional value.

20/9

MS425. Gent's Sandal, especially designed for comfortable leisure wear, with open sides and punched ventilated front. In rich **Brown** fine-grained leather. Veldtschoen crepe sole and heel, providing complete flexibility.

20/11

MS194. Gent's High Grade Sandal, made from selected russet shade pebble-grained leather. A sensibly styled Sandal, finished with first-quality crepe rubber sole and heel. A high-grade production.

23/6



MS428. Gent's Cricket Boot in heavy quality waterproofed white canvas, lined with soft pliable leather, and finished with stout leather sole and heel. A very reliable sports boot.

26/11

MS427. Gent's **White** Oxford Shoe, made from fine quality waterproofed material, closely woven texture, with suede appearance. An ideal holiday shoe, finished with leather sole and heel.

18/11



MS166. Tennis Shoes of high-grade British manufacture. Made from white waterproofed canvas. Vulcanised rubber bottoms, crepe finish. Available for men, women and children, as follows :-

Men's sizes : 6-11	Per Pair 7/11
Women's sizes : 6-8	Per Pair 6/11
Women's sizes : 2-5	Per Pair 6/6
Youths' sizes : 2-5	Per Pair 6/6
Children's sizes : 10-1	Per Pair 6/3
Children's sizes : 4-9	Per Pair 5/6

LENNARDS SHOES—EASY ON THE FEET

LENNARDS MAIL ORDER STORES·BRISTOL·ENGLAND

MS442



MS442. Gent's Derby Shoe, sturdily made from smooth **Black** leather, with roomy toe, and finished with medium-weight English leather sole and heel. Wonderful value.

24/6

The above quality Shoe made also in **Black** leather, in Oxford style.

24/6

MS148



MS148. Gent's **Tan** Oxford Shoe made from stout-quality leather, neatly styled. A comfortable roomy shoe, with medium-weight English leather sole and heel.

22/6

The above style available also in **Black**.

22/6

MS447



MS447. Gent's **Black** Oxford Shoe, sturdily built and smartly styled from smooth leather, with solid leather sole and heel. A good general purpose shoe for the city man.

27/6

MS448. A similar quality Shoe to the above, available in Oxford style, made from selected **Tan** leather.

27/6

MS467. Gent's Derby Shoe, of similar construction to MS447. In smart **Tan** shade.

27/6

MS446



MS446. Gent's Oxford Style Shoe, specially designed on wide-foot last, and sturdily built in simple **Brown** leather, finished with Dunlop rubber soles and heels. An ideal walking shoe, reliable in wear.

25/6

MS452



MS452. Gent's London Brogue Shoe, in rich **Brown** leather. Strongly made and finished with good quality English leather sole and heel. A smartly styled shoe.

27/6

MS450



MS450. Gent's Oxford Style Shoe, made on very smart pattern last, in rich shade of **London Tan**. Fine-grained leather, finished with light-weight English leather sole and heel. A shoe for the well-dressed man. Wonderful value.

25/3

The above Shoe available exactly as described but with rubber sole and heel.

23/6

ALL LENNARDS FOOTWEAR IS BRITISH MADE FROM
BEST QUALITY MATERIALS BY SKILLED LABOUR

LENNARDS MAIL ORDER STORES · BRISTOL · ENGLAND

MS116. Built for a tough job. This Miner's Safety Boot is specially designed with padded cushion tongue, crush-proof steel toe-cap and finished with drench-proof soles, nailed and steel-tipped with all round tip on solid leather heel. Indispensable for miners, 39/8
planters, foresters.



MS455. Gent's No-cap Derby Style Boot, Police pattern, a nice roomy comfortable boot, built for hard wear and smart appearance. Heavy-weight good quality leather sole, heel finished with non-slip rubber top piece. Exceptional value. 28/6

MS453. Gent's Derby Style Boot. A very nice medium-weight, in soft quality smooth leather, with medium solid English leather sole and heel. Special value. 29/6

Gent's Derby Style Boot, exactly as above description, in smooth Brown leather 29/6



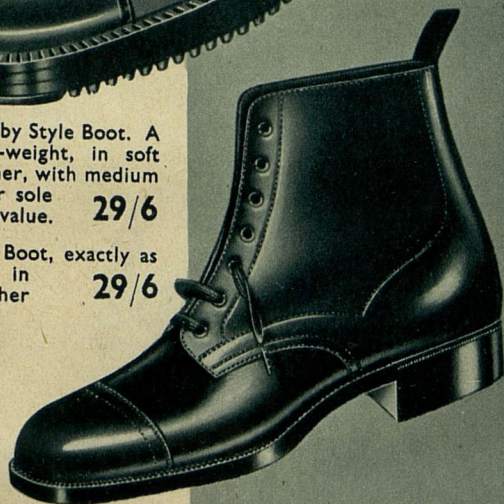
MS456. Gent's South African Field Boot. A specially designed boot of smart appearance, for the job demanding hard wear, combined with strength and support. The uppers are of solid smooth Black leather, lined with soft pliable natural shade leather. A special feature of this boot is the double tongue. A big value boot for 31/11

FB201. Football Boots for men, youths and boys. Soundly constructed from good quality russet leather, with reliable toe block, and extra quality through leather sole and correctly studded.

Men's sizes : 6-11, 19/2 Per Pair.

Youths' sizes : 2- 5, 14/3 Per Pair.

Boys' sizes : 11- 1, 10/9 Per Pair.



LENNARDS MAIL ORDER STORES · BRISTOL · ENGLAND

for **DURABILITY**
and **COMFORT**



CS
301

CS301. Boy's Black Boot Derby Style, sturdily built for hard wear. Slugged leather sole and solid leather heel with steel half tip.

Sizes : 7-10 Per Pair 15/6
 Sizes : 11-1 Per Pair 16/11
 Sizes : 2-5 Per Pair 20/6



CS
302

CS302. Superior Quality Boy's Black Derby Boot, finished with neat toe and special hard wearing vulcanised sole and heel.

Sizes : 11-1 Per Pair 16/6
 Sizes : 2-5 Per Pair 19/9



CS
303

CS303. Boy's Oxford Shoe, smart style, in Black or Brown. A medium-weight shoe which will give hard wear and comfort. With strongly sewn double bend leather sole and solid leather heel.

Sizes : 11-1 Per Pair 17/9
 Sizes : 2-5 Per Pair 21/-



CS
305

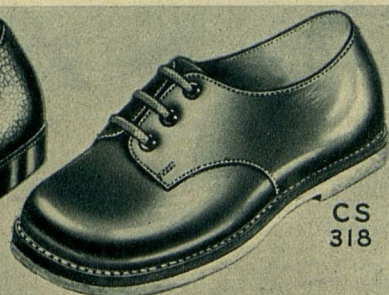
CS305. A smart style Shoe for the young man. Derby style with apron front. Made from smooth leather, sturdily built with medium-weight English bend sole and leather heel.

Sizes : 11-1 Per Pair 19/-
 Sizes : 2-5 Per Pair 23/6
 Available in Black or Brown.



CS
319

CS319. Infant's Shoe in Brown grained leather. Strongly made and specially designed for foot freedom. Finished with leather sole and heel. Sizes 3-6 9/11. Sizes 7-8 10/11.



CS
318

CS318. Smartly styled Infant's Shoe, in Red grained leather with sewn-on sole of natural crepe rubber. A nicely made shoe for the toddler. Sizes 3-6 9/11. Sizes 7-8 10/11.



CS
317

CS317. Child's Ankle-strap Shoe in a pretty shade of Blue grained leather with fancy punched toe and finished with natural crepe rubber sole and heel. Sizes 3-6 8/11, 7-8 9/11.

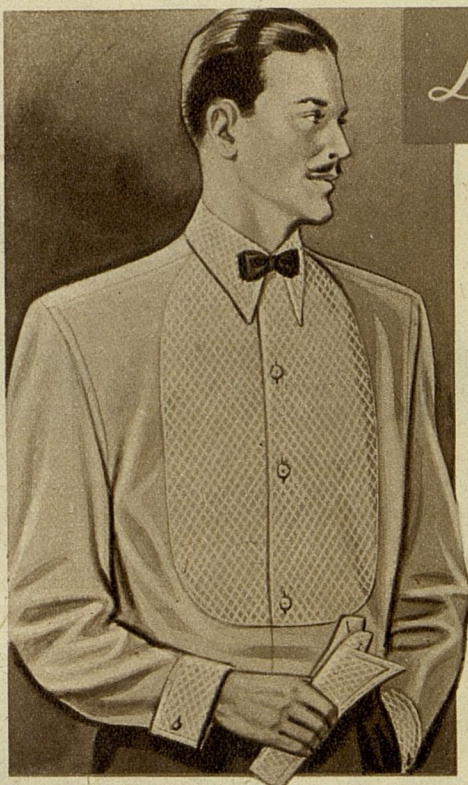


CS
316

CS316. Toddler's Sandal in Blue grained leather with punched front, finished with natural crepe rubber sole and heel. Comfortable in wear. Durable quality. Sizes 3-6 8/11, 7-8 9/11, 9-10 10/11.

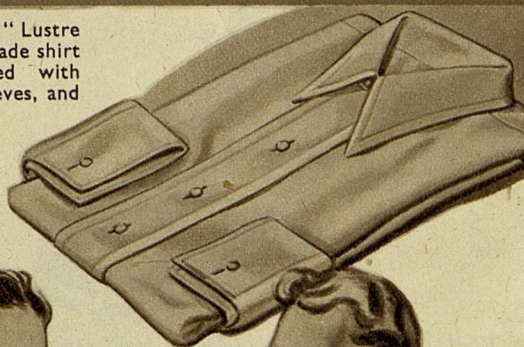
LENNARDS MAIL ORDER STORES · BRISTOL · ENGLAND

Lennards for Mens Wear



MO565. Gent's White "Lustre Cotton" Shirt, a high grade shirt extremely well tailored with collar attached, long sleeves, and button through cuffs.
Collar sizes : 14½-17½ in.

Price **15/11**



MO576. Gent's Evening Dress Shirt, a superior shirt in semi-formal style, made from fine high grade cotton. Apron front, 2 collars and reinforced cuffs, made in smart Marcella weave cotton, fully tailored and London finished throughout.
Collar sizes : 14½ to 17 in.

22/6

MO588. Black Evening Dress Bow, latest London fashioned Bow with double wings, ready made for immediate wear, easily adjusted with variable neck band.

Each **4/6**



MO518a. Men's Interlock Vests, athletic style, woven from fine grade cotton, all seams fully overstitched.
Sizes : S.Ms., Ms. and O.S.

3/11

MO518b. Men's Athletic Trunks, to match Vests as **MO518a**, designed for the athletic figure. An extremely well made article finished with cotton covered elastic banded waist. Sizes : S.Ms., Ms. and O.S.

Each **4/6**



MO553a. Men's Athletic Vests, specially woven for comfort in the new "Ventilate" weave, exceptionally comfortable and hygienic in wear.
Sizes : S.Ms., Ms. and O.S.

Each **5/11**

MO553b. Men's Trunks, also in "Ventilate" weave to match Vests, cool, light and hygienic.
Sizes : S.Ms., Ms. and O.S.

Each **5/11**

MO563a. Honey-Comb Weave Underwear for Men, a new weave in extra soft quality White cotton and vest roomily made. Sizes : S.Ms., Ms. and O.S.

Each **3/6**

MO563b. Gent's Trunks in Honey-Comb Weave Cotton to match Vest in extra light weight cotton. Very comfortable in wear. Sizes : S.Ms., Ms. and O.S.

Each **3/11**

LENNARDS MAIL ORDER STORES · BRISTOL · ENGLAND

Headgear for all Climates



MH213

MH213. The New "American Styled" Broad Brimmed Felt, a good quality light weight felt hat, stylishly designed in shades of **Fawn** or **Nickel Grey**, pleasingly finished with contrasting braid and brim. Each. **10/9**

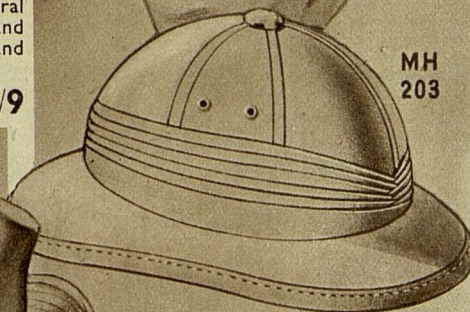
MH204. The Famous "Prince of Wales" Helmet, made from selected cork and rubber covered with fine quality **White** drill. Fitted with **White** leather chin strap. Each **33/6**

MH203. The "Joywear Helmet" especially constructed, very light in weight, covered in fine **White** cotton drill. Special ventilation chamber in crown, patent fitting head band and chin strap. Each **23/6**

MH210. Tropical Planter's Hat, made from heavy quality natural drill, with anti-glare under-brim and ventilated crown, a very light and comfortable hat for tropical wear. Price **9/9**



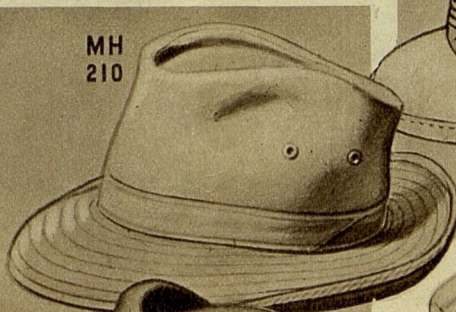
MH 204



MH 203



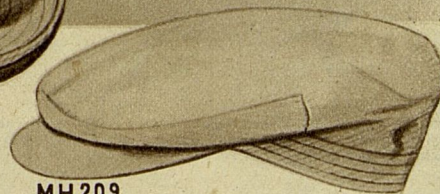
MH 201



MH 210



MH 207



MH209

MH209. Gent's **White** Drill Cap, specially designed with full top fitted with press stud peak, covered underside with anti-glare material of soft **Green** shade. An ideal cap for hot sunshine. **8/11**



MH208

MH201. The "Eden" Style Hat, a good quality felt with leather inside and Art. Silk lining. Colours: **Black, Brown** and **Navy**. Price **14/9**

MH202. Gent's smartly Styled Felt Hat, with snap brim, unlined, in shades of **Grey, Navy** and **Fawn**. Light in weight, comfortable in wear. Price **10/6**

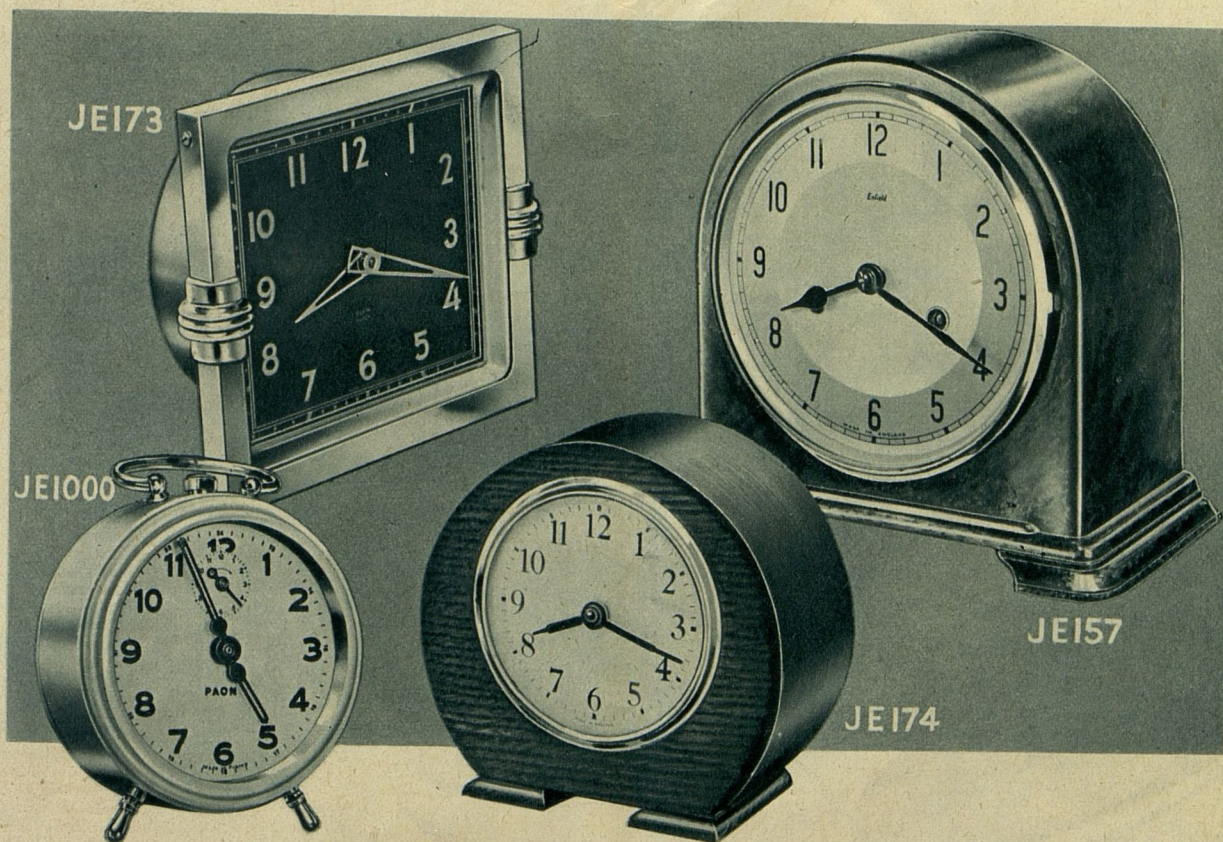
MH207. Smartly Styled Gent's Hat with snap brim and shaped crown, finished with corded ribbon trimming in shades of **Chocolate, Slate Blue, Grey** and **Bottle Green**. Each **8/11**

MH208. Men's Tweed Caps, made from good quality Donegal type and check materials as illustrated. Lined Art. Silk with press stud peak. **5/6**

BARGAIN OFFER

MH500. Ex. Gov't tropical helmets, covered khaki drill, Each **5/-**

LENNARDS MAIL ORDER STORES · BRISTOL · ENGLAND



JE173. Attractive Mantel Clock. A soundly constructed clock entirely British made, frame finished in stainless gilt enamel with Black dial and gilt numerals and pointers. A reliable time keeper.

32/6

JE1000. Alarm Clock, a reliable and fully guaranteed alarm clock, made by a famous French manufacturer. 3½ in. in diameter, standing 5 in. high, finished in attractive pastel shades. (Made in France.)

17/6

JE138. Gent's Shock Resisting nickel chrome Wristlet Watch with steel back, 17 jewelled lever, centre seconds hand and luminous dial. Complete, fitted with transparent plastic strap. (Swiss made.)

82/6

JE137. Gent's Wrist Watch, reliable lever 15 jewelled movement, handsomely designed in stainless steel case with attractive dial. An excellent timekeeper with centre seconds hand, fitted complete with strong leather strap. Manufactured by the famous "Felca" Company, Switzerland.

70/-

JE157. Handsome "YORK" Striking Clock, designed for mantel or side-board, strikes each hour and half-hour. Specially constructed 8-day movement, fitted in charming case of walnut grained plastic. A sound and reliable clock. (Made in England.)

75/-

JE174. Oak Mantel Clock. An all British made clock with sound movement, set in handsome oak finish case. Height approximately 5½ in. (Made in England.)

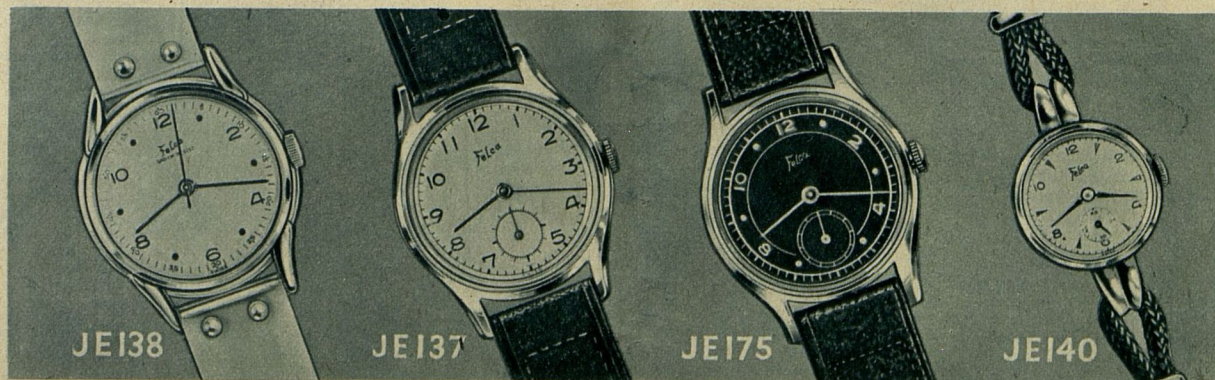
29/6

JE175. Gent's "Felca" Wrist Watch in modern design, 17 jewelled Swiss lever precision made movement, handsome dial with centre seconds hand (Swiss made.)

75/-

JE140. Lady's Wrist Watch, 15 jewelled lever movement fitted in nickel chrome case with stainless steel back, small seconds hand and silvered dial. Fitted strap of silk cordette. (Swiss made.)

80/-



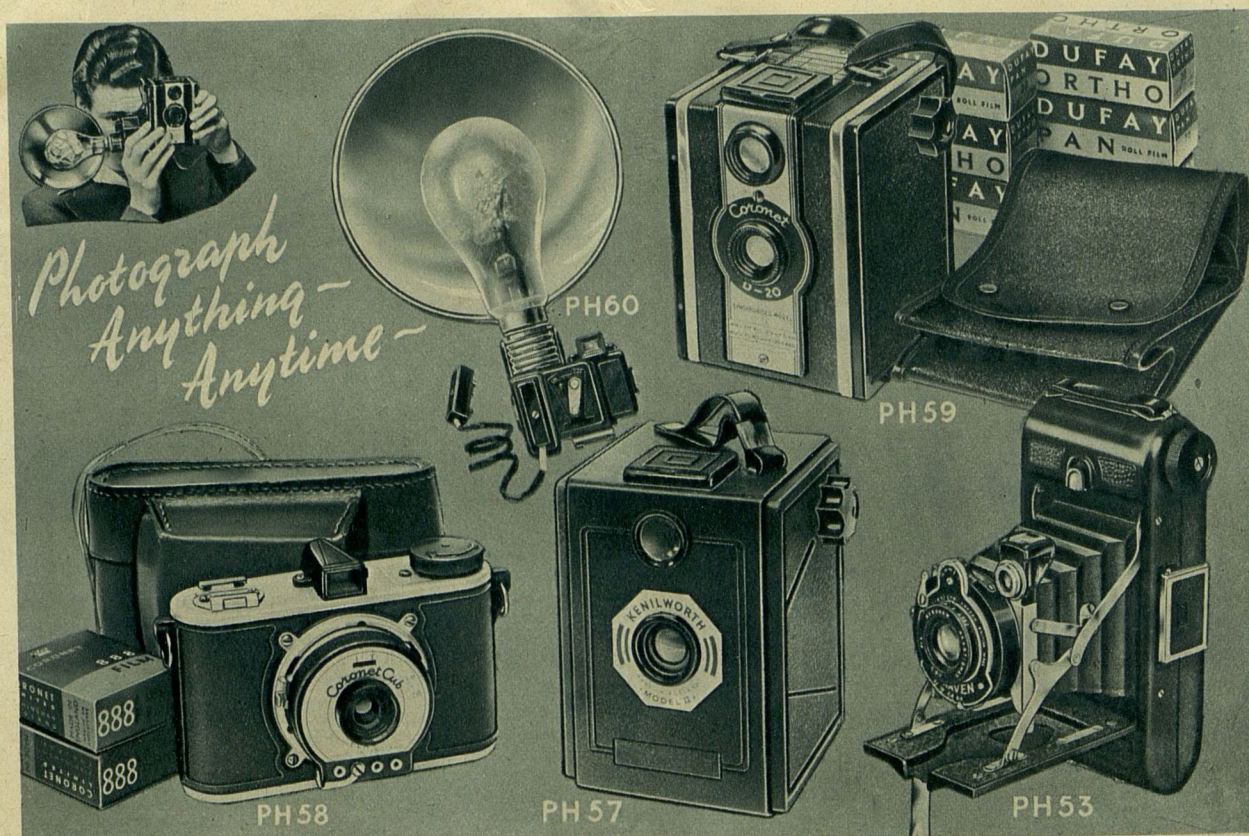
JE138

JE137

JE175

JE140

LENNARDS MAIL ORDER STORES · BRISTOL · ENGLAND



PH58. "Coronet Cub" Camera Set. An all British scientifically designed Camera fitted with perfect lens and instantaneous or time exposure switch. Adaptable for horizontal or perpendicular pictures. This new model also incorporates simple fitting for coupling to simultaneous flashlight equipment. Set comprises Camera, "Ever Ready" leatherette carrying case, six films and complete instructions. Per Set **£4/11/6**

PH60. Coronet Flash Unit attachment for Coronet Cub and Coronet Box Cameras. Enables excellent photographs to be taken in any light conditions at any time, complete ready for use with full instructions. **£1/10/0**

PH59. "Coronet Box" Camera, of excellent British manufacture and strongly made. Perfect lens with precision tested shutter, extra large view finder with protector, complete with "Ever Ready" plastic case, shoulder strap, six films and full instructions. **£2/10/0**

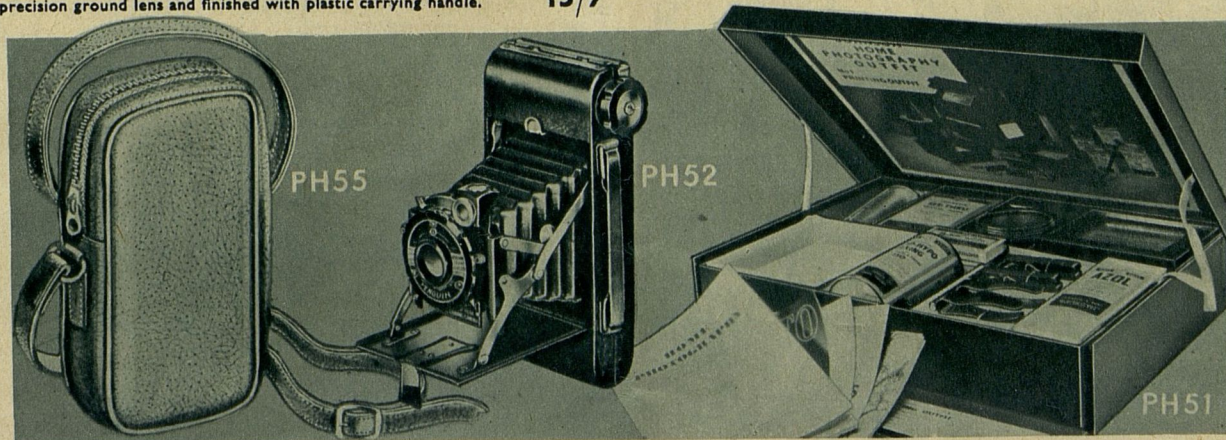
PH57. Improved style "Kenilworth" Box Camera, especially designed to fit both No. 120 and 620 films. Camera is fitted with one way shutter. precision ground lens and finished with plastic carrying handle. **15/9**

PH53. The "Raven" Roll-film Camera with direct-vision viewfinder. A British Camera of the very highest grade, bearing engraved distance scale or accurate photography. Precision 3-speed shutter. A scientifically designed Camera. With full instructions. **£8/8/0**

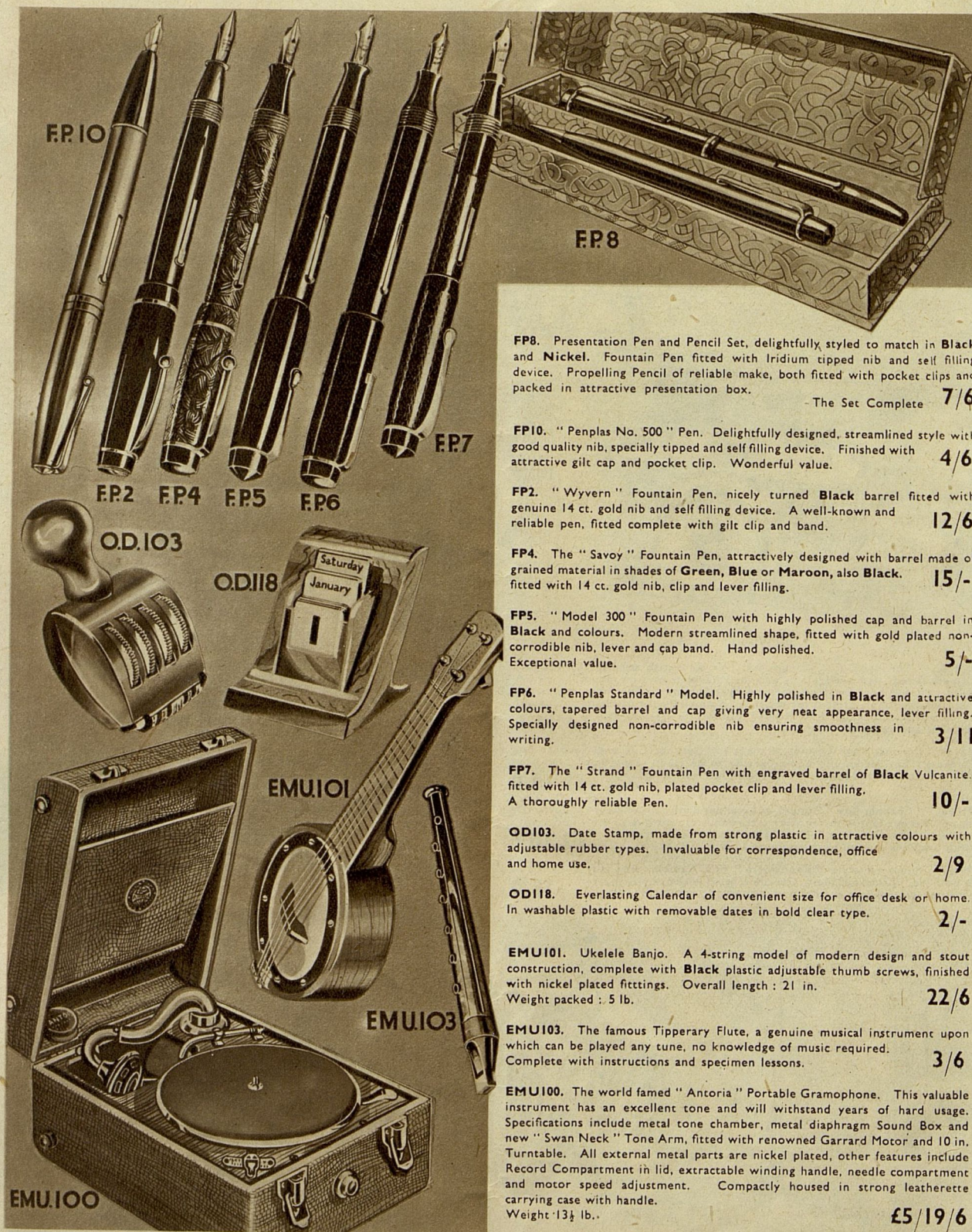
PH55. Camera Case, specially designed to fit Penguin Camera No. PH52. in fine grained Grey Leather with zip fastener and shoulder strap. **15/6**

PH52. The "Kershaw" Eight-20 Penguin Roll-film Camera. An excellent Camera for the amateur or professional, incorporating all-distance focusing precision operated shutter and quick action loading device. Beautifully finished with chromium plated fittings and leather handle, for use with No. 120 films. **£3/10/0**

PH51. Home Photography Outfit, comprising Portable Dark Room Lamp, Graduated Measure, Developing Dish, Printing Frame, Fixing Dish, Thermometer, Developer, and Fixers, etc. Complete with full instructions and 64-page book on Photographic Development in the Home. **£1/8/6**



LENNARDS MAIL ORDER STORES · BRISTOL · ENGLAND



FP8. Presentation Pen and Pencil Set, delightfully styled to match in **Black** and **Nickel**. Fountain Pen fitted with Iridium tipped nib and self filling device. Propelling Pencil of reliable make, both fitted with pocket clips and packed in attractive presentation box.

The Set Complete **7/6**

FP10. "Penplas No. 500" Pen. Delightfully designed, streamlined style with good quality nib, specially tipped and self filling device. Finished with attractive gilt cap and pocket clip. Wonderful value.

4/6

FP2. "Wyvern" Fountain Pen, nicely turned **Black** barrel fitted with genuine 14 ct. gold nib and self filling device. A well-known and reliable pen, fitted complete with gilt clip and band.

12/6

FP4. The "Savoy" Fountain Pen, attractively designed with barrel made of grained material in shades of **Green, Blue or Maroon, also Black**, fitted with 14 ct. gold nib, clip and lever filling.

15/-

FP5. "Model 300" Fountain Pen with highly polished cap and barrel in **Black** and colours. Modern streamlined shape, fitted with gold plated non-corrodible nib, lever and cap band. Hand polished.

5/-

FP6. "Penplas Standard" Model. Highly polished in **Black** and attractive colours, tapered barrel and cap giving very neat appearance, lever filling. Specially designed non-corrodible nib ensuring smoothness in writing.

3/11

FP7. The "Strand" Fountain Pen with engraved barrel of **Black** Vulcanite, fitted with 14 ct. gold nib, plated pocket clip and lever filling. A thoroughly reliable Pen.

10/-

OD103. Date Stamp, made from strong plastic in attractive colours with adjustable rubber types. Invaluable for correspondence, office and home use.

2/9

OD118. Everlasting Calendar of convenient size for office desk or home. In washable plastic with removable dates in bold clear type.

2/-

EMU101. Ukelele Banjo. A 4-string model of modern design and stout construction, complete with **Black** plastic adjustable thumb screws, finished with nickel plated fittings. Overall length: 21 in. Weight packed: 5 lb.

22/6

EMU103. The famous Tipperary Flute, a genuine musical instrument upon which can be played any tune, no knowledge of music required. Complete with instructions and specimen lessons.

3/6

EMU100. The world famed "Antoria" Portable Gramophone. This valuable instrument has an excellent tone and will withstand years of hard usage. Specifications include metal tone chamber, metal diaphragm Sound Box and new "Swan Neck" Tone Arm, fitted with renowned Garrard Motor and 10 in. Turntable. All external metal parts are nickel plated, other features include Record Compartment in lid, extractable winding handle, needle compartment and motor speed adjustment. Compactly housed in strong leatherette carrying case with handle. Weight 13½ lb.

£5/19/6

LENNARDS MAIL ORDER STORES · BRISTOL · ENGLAND

TP80. Shaving Brush with head of bristle and hair, guaranteed sterilised and strongly fitted in hygienic plastic handle. **1/9**

TP53. Lady's Hairbrush of good quality British manufacture guaranteed hygienic standard with pure filling firmly secured in polished wood back. **2/9**

TP85. Lady's Hairbrush, an attractive toilet necessity, made with good quality fibre tufts in plastic back, in gay colours. **2/6**

TP83. Hairbrush made of good quality hard wearing fibre closely tufted in white wood back. **1/9**

OD203. Nursery Hot Water Bottle especially designed for children in attractive colours of **Blue** and **Red**, with Nursery Rhymes moulded on bottle. Very special value. **5/3**

OD108. Big value Hot Water Bottle, full size, moulded from first quality rubber in modern design, finished with tight-fitting stopper. A guaranteed article. **5/6**

TP54. Hair Clippers of high grade Sheffield steel, simple and efficient in use for either Ladies or Gentlemen, easily adjusted for cleaning. A spare spring is included with each Clipper. Available for Fine, Medium or Coarse cutting, state grade required. **7/6**

OD101. Wall Thermometer, 8 in. long mounted on Ivoryne tablet fixed to hard wood back, and fitted with metal hanging loop, bulb protected by brass guard. **4/9**

TP51. Gent's Dressing Set comprising 2 Plastic Holders for Shaving Brush and Soap with Chrome metal screw tops, 1 moulded plastic Safety Razor, all steel highly polished Shaving Mirror, the set contained in nicely grained solid leather case measuring 4½ in. x 4 in. and folding with press button flap. Complete with hair Shaving Brush and 3 Safety Razor Blades. A handsome gift. **11/6**

TP73. Bath Sponge made from soft quality composition rubber of convenient size. In attractive colours. **2/-**

TP78. Very useful Safety Razor contained in compact traveller's case finished in **White** Plastic and complete with 6 razor blades. Big value. **2/6**

OD111. Special offer of Sunspecs, tinted eye-pieces in good quality modern plastic frames. These are an exceptional offer at the very low price of **1/-**

TP79. Halex Toothbrush, assorted coloured handles. **1/3**

TP84. Lady's or Gent's Comb. Strong quality. **9d.**

TP83 Hairbrush made of good quality hard wearing fibre closely tufted in white wood back. **1/9**

OD203 Nursery Hot Water Bottle especially designed for children in attractive colours of **Blue** and **Red**, with Nursery Rhymes moulded on bottle. Very special value. **5/3**

OD108 Big value Hot Water Bottle, full size, moulded from first quality rubber in modern design, finished with tight-fitting stopper. A guaranteed article. **5/6**

TP54 Hair Clippers of high grade Sheffield steel, simple and efficient in use for either Ladies or Gentlemen, easily adjusted for cleaning. A spare spring is included with each Clipper. Available for Fine, Medium or Coarse cutting, state grade required. **7/6**

OD101 Wall Thermometer, 8 in. long mounted on Ivoryne tablet fixed to hard wood back, and fitted with metal hanging loop, bulb protected by brass guard. **4/9**

TP51 Gent's Dressing Set comprising 2 Plastic Holders for Shaving Brush and Soap with Chrome metal screw tops, 1 moulded plastic Safety Razor, all steel highly polished Shaving Mirror, the set contained in nicely grained solid leather case measuring 4½ in. x 4 in. and folding with press button flap. Complete with hair Shaving Brush and 3 Safety Razor Blades. A handsome gift. **11/6**

TP73 Bath Sponge made from soft quality composition rubber of convenient size. In attractive colours. **2/-**

TP78 Very useful Safety Razor contained in compact traveller's case finished in **White** Plastic and complete with 6 razor blades. Big value. **2/6**

OD111 Special offer of Sunspecs, tinted eye-pieces in good quality modern plastic frames. These are an exceptional offer at the very low price of **1/-**

TP79 Halex Toothbrush, assorted coloured handles. **1/3**

TP84 Lady's or Gent's Comb. Strong quality. **9d.**

LENNARDS MAIL ORDER STORES · BRISTOL · ENGLAND

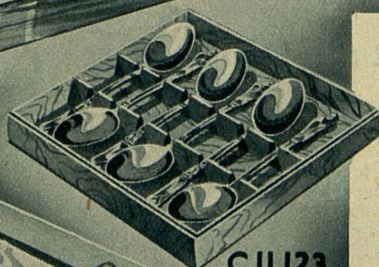
*Best
Quality
Cutlery*



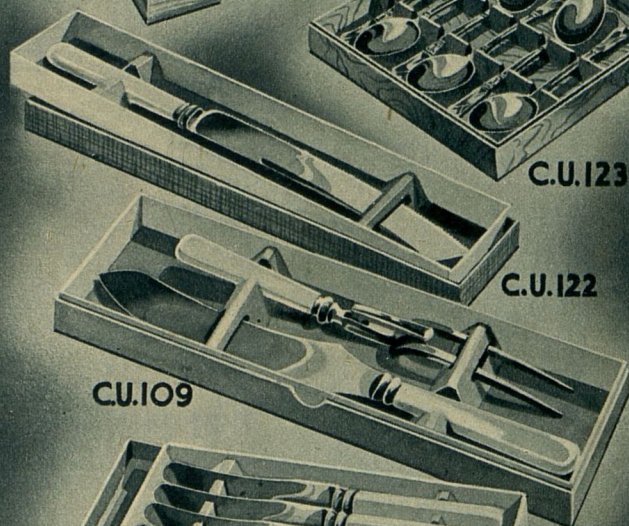
C.U.117



C.U.115

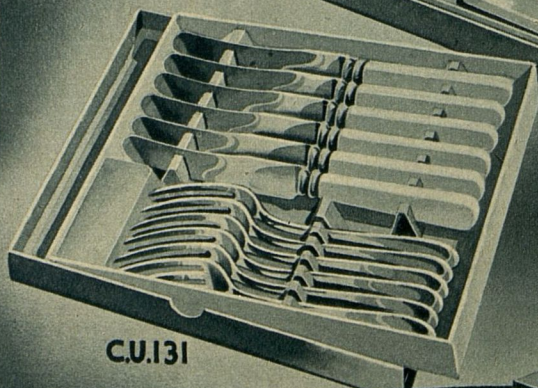


C.U.123

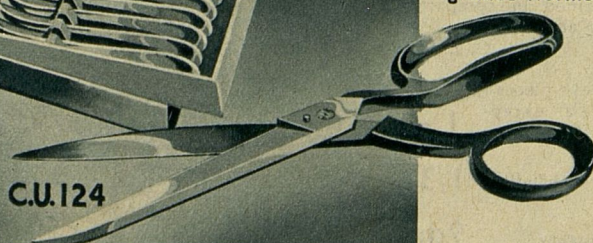


C.U.122

C.U.109



C.U.131



C.U.124

CUI17. 24 piece Canteen of finest quality chrome plated Sheffield steel, comprising 6 Knives with solid bolster and handles grained Ivory, 6 heavy quality forks, 6 dessert or soup spoons, 6 teaspoons to match, all contained in fitted lined oak case. A handsome cabinet. **67/6**

CUI15. Delightful Fruit Set comprising 1 large server and 6 individual spoons, carefully designed, finished in heavy quality plate, contained in fitted and lined case, attractively covered in bright colours. A handsome gift. **21/6**

CUI23. Set of 6 Apostle Spoons, made of British stainless steel, chrome plated. An attractive and useful gift. Box **4/11**

CUI22. Stainless steel Bread Knife, made from highest grade Sheffield steel with finely serrated edge ensuring even cutting and finished with grained ivorine handle, blade 7½ in. long. **6/6**

CUI09. Pair of Stainless Steel Carvers, consisting of wide bladed knife with solid bolster and fork fitted with shield-guard, finished with plastic handles. Guaranteed Sheffield Steel. Box **15/9**

CUI31. Set of 6 Dessert Knives and 6 Forks, made from finest stainless Sheffield steel. The knives are of convenient shape and size and finished with grained ivorine handles, attractively boxed. **24/6**

CUI24. Tailors or Dressmakers Shears. A conveniently sized scissor for home dressmaking or tailoring, made from finest Sheffield steel with 7 in. blade and enamelled grips. **6/9**

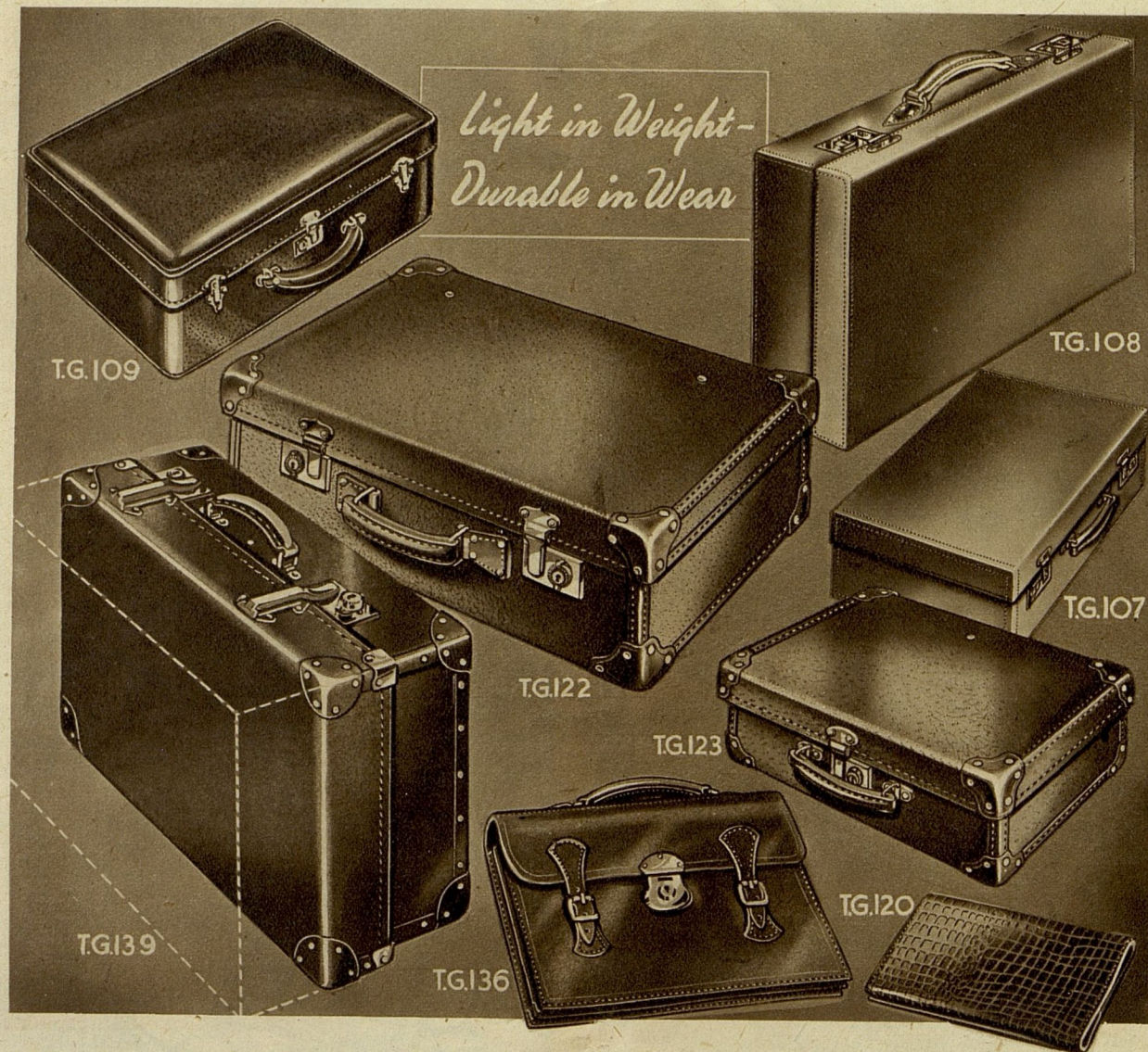
LENNARDS MAIL ORDER STORES · BRISTOL · ENGLAND

Offered on this page is a selection of high grade Cutlery, please note that Spoons and Forks are available in best quality Chrome Plate or Nickel Silver Plate as described below :-

CU.108. Heavy quality Chrome Plated Teaspoons 6 for 6/3
CU.141. Teaspoons of exactly the same style as above in heavy quality Nickel Silver Plate 6 for 3/9
CU.107. Dessert Forks in heavy quality Chrome Plate 6 for 10/3
CU.143. Dessert Forks finished in good quality Nickel Silver 6 for 6/6
CU.113. Full size Dinner Forks of heavy quality finished in Chrome Plate 6 for 10/9
CU.145. Dinner Forks similar to above finished in good quality Nickel Silver 6 for 7/9
CU.146. Table Spoons full size in heavy quality Chrome Plate 6 for 10/9
CU.147. Table Spoons similar to above finished in durable Nickel Silver 6 for 7/9
CU.106. Dessert Spoons in heavy quality Chrome Plate 6 for 10/3
CU.149. Dessert Spoons similar to above, finished in reliable Nickel Silver Plate 6 for 6/6
CU.130. Soup Spoons designed with deep bowl and finished best Chrome Plate 6 for 10/9
CU.151. Soup Spoons as above design, finished in reliable Nickel Silver Plate 6 for 8/3
CU.105. Table Knives made from mirror finished Sheffield Steel and fitted with **White** ivory handles, thoroughly reliable and guaranteed 6 for 19/6
CU.104. Dessert Knives of Stainless Steel as above quality and design 6 for 16/3
CU.121. Useful set of 4 specialised Knives made from finest quality Stainless Steel, including Salad Knife with serrated edge, Butter Knife, Cheese Knife and Grapefruit preparing Knife, each fitted with smooth **White** ivory handle, attractively boxed complete per set 15/-
CU.102. Stainless Steel Pocket Penknife, extra sharp Sheffield Steel blade enclosed in engine turned cover, a useful gift 6/-
CU.101. Stainless Sheffield Steel Pocket Penknife, handy size, extra sharp blade enclosed in smooth polished cover 5/-
CU.116. Case of Fish Eaters consisting of 6 Knives and Forks, delightfully styled from finest quality Steel in handsome Art. silk lined case covered with leathercloth. An acceptable gift 32/6

CU.130
CU.108
CU.107
CU.113A
CU.113B
CU.106
CU.105
CU.104
CU.121
CU.102
CU.101
CU.116

LENNARDS MAIL ORDER STORES · BRISTOL · ENGLAND



TG109. A Soft Top Week-end Case, especially for ladies' use, size $20 \times 13 \times 6\frac{1}{2}$ in., covered in superior quality grained leather-cloth in **Black** or **Navy**.
Price **31/6**

TG139. Extending Suitcase, a most useful case for the regular traveller, made from good quality fibre with fully reinforced corners and overbound ends, fitted with patent locks. The case can be extended to admit almost double capacity, normal size approx. $24 \times 13\frac{1}{2} \times 7\frac{1}{2}$ in. (size can be extended to a depth of approximately 11 in.).
Price **27/6**

TG122. Wonderful Value Suitcase, of very strong construction, size $24 \times 13\frac{1}{2} \times 6$ in., fitted with solid leather handle and two strong locks. Amazing value.
22/6

TG123. A Special Value Attache Case, made of good quality fibre with reinforced corners.
Size: $16 \times 10 \times 4\frac{1}{2}$ in.
Price **12/6**

TG136. Leather Despatch or Brief Case, indispensable to the business man, this case is soundly made throughout with best quality British workmanship, fitted with 2 document pockets and plated lock with key.
Price **42/6**

TG108. Brown Leather Suit Case, in finest quality real hide, full size $24 \times 13\frac{1}{2} \times 6$ in., fitted with two strong plated locks, strongly sewn and beautifully finished, an article which will give lasting service.
Price **90/-**

TG107. Real Leather Attache Case, size $16 \times 10 \times 4$ in., strongly made and sewn with 2 nickel plated locks and stout handle. A most useful case for the student or businessman.
Price **34/6**

TG120. Gent's All Leather Wallet in beautiful crocodile grain, Art. Silk lined with pockets for currency notes, stamp division, etc., at specially low price of **5/9**

LENNARDS MAIL ORDER STORES · BRISTOL · ENGLAND



TG137. Cane Picnic Hamper, beautifully made from interlaced cane in attractive colours with strong carrying handles and including the complete necessities for picnic or food carrying. The contents include large quart size Thermos Flask, Sandwich Tin, Milk Bottle, 2 Plastic Cups, 2 Saucers, 2 Plates, dustproof containers for Butter, Sugar, Salt, Pepper and Spoon. Neatly packed and comfortable to carry. **39/6**

TG138. Picnic Set in strong leatherette carrying bag, soundly made with 2 leather carrying handles and completely enclosed with overall zip fastening. The contents include one pint Thermos Flask, Sandwich Tin, Milk Bottle, 2 Plastic Cups, 2 Plates, 2 Saucers, dustproof containers for Butter, Sugar, Salt, Pepper and Plastic Spoon. **45/-**

TG126. Useful Shopping Basket, made from fine woven cane, 16 in. long finished with folding handles trimmed with attractive coloured grips, very strong and extremely useful. **14/6**

TG133. Black Leatherette Shopping Bag, approximately 15 in. long, fitted with zip fastener and stout handles. **10/6**

TG118. Extremely Smart New Style 'All Purpose' Bag. Made from attractive heavy plastic material in pleasing shade of Blue and finished with contrasting binding. Full zip fastener and two strong handles, size 16½ x 12 x 6 in. **27/6**

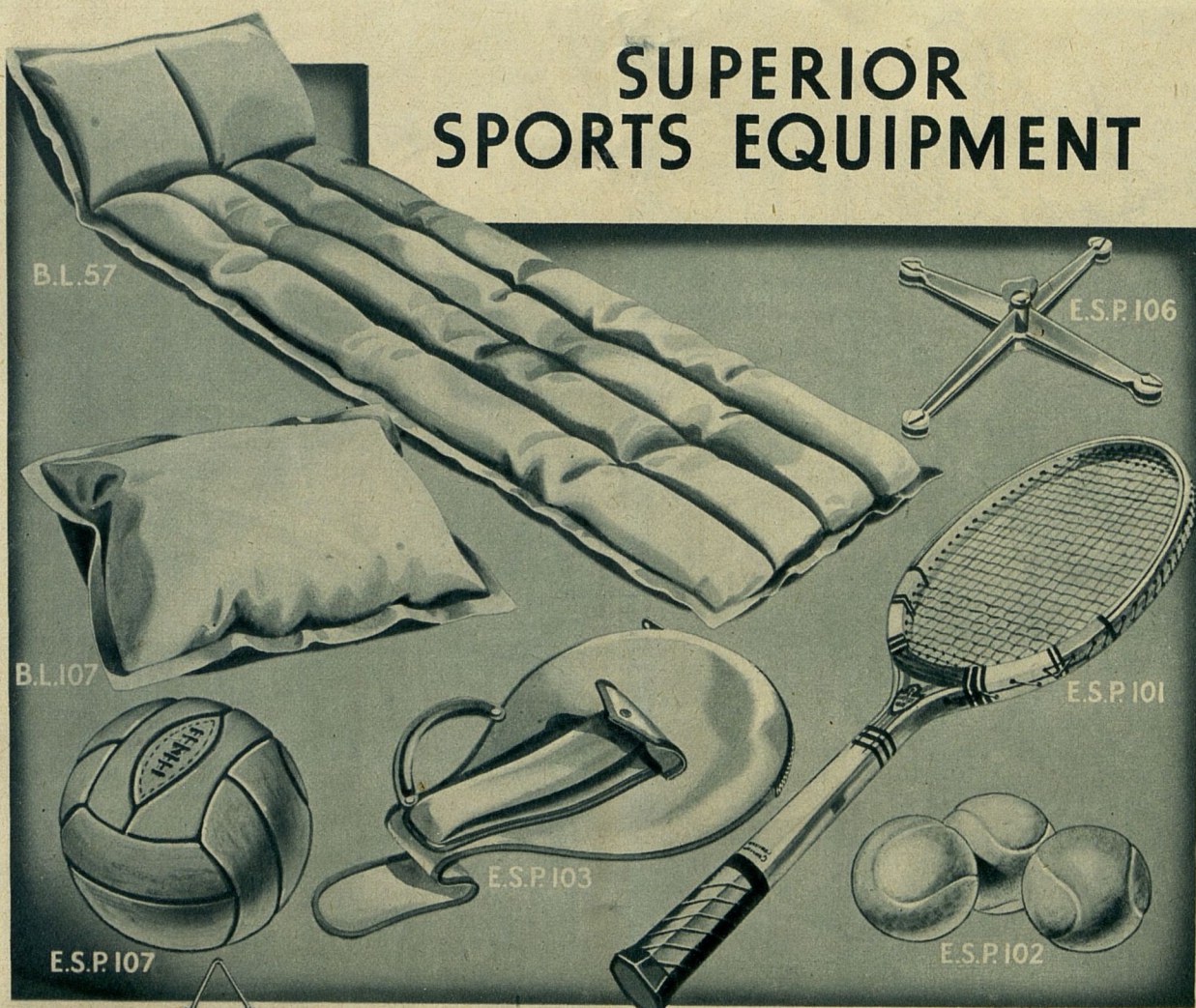
TG127. Extra Strong Shopping Bag of fine quality Khaki Drill material, fitted with solid circular plastic handles and full length zip fastener. Approximate length 14½ in. **15/6**

TG103. Gent's Solid Leather Purse, containing 3 outside sections and one inside and finished with protective flap, in fine morocco grain. Brown or Black. **3/11**

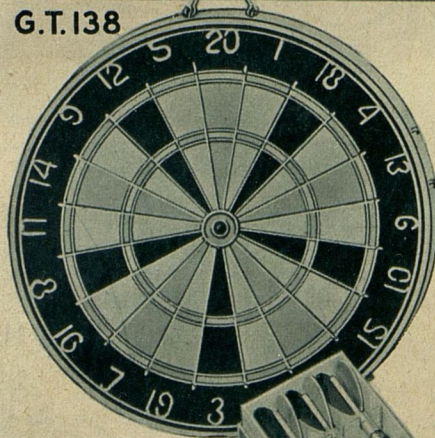
TG121. Lady's Leather Purse, strongly made in good quality hide in handy size for Handbag or Pocket, complete with 3 pockets and safety pocket and plated snap fastener. **4/11**

LENNARDS MAIL ORDER STORES · BRISTOL · ENGLAND

SUPERIOR SPORTS EQUIPMENT



G.T.138



G.T.150

BL57. The "New Wonder" "LI-LO" Air Bed, ideal for camping, sunbathing, water sports, etc. Size approximately 72x30 in., made from heavy quality fine cotton material specially waterproofed and airtight, fitted with rubber inflation valve and complete with small repair outfit in case of accidental damage. **35/6**

BL107. "LI-LO" Air Pillow, suitable for all occasions, a particularly useful Air Cushion for invalids, camping, etc. Size 18x13 in., made from strong rubberised canvas. **4/9**

ESP107. Big value standard size Leather Football, strongly stitched, 12-panel case, made of high grade leather, size 5. Complete with pure rubber bladder. **27/6**

ESP103. Tennis Racket Cover made from stout waterproof drill and fitted with pocket to hold 6 balls, finished with carrying handle. **13/6**

ESP106. Aluminium Tennis Racket Press, of new design in weatherproof metal, simply fitted with one adjustment tightening screw only. **8/6**

ESP101. Tennis Rackets, strongly made of laminated construction throughout, strung with real catgut, weight 13½ oz., finished with leather covered handle grip. **37/6**

ESP102. Tennis Balls of standard size and exceptional quality, covered with felted wool material, medium weight, approved L.T.A. Packed in sealed container. **THREE FOR 6/9**

GT138. Double Sided Dart Board, full size, specially manufactured for hard wear. Both sides fitted with changeable metal wires. **15/-**

GT150. Set of Three Fine Quality Darts of solid brass with steel points and feather flights. Packed in Box of Three. **2/-**

LENNARDS MAKE ORDER STORES · BRISTOL · ENGLAND

BRITISH HEAT RESISTING OVEN GLASS



PHOENIX
REGD. TRADE MARK



"PHOENIX" British Heat Resisting Oven Glass-Ware enables food to be served piping hot from oven to table. Illustrated above are 9 different pieces of glass-ware necessary and useful in the cooking of food. The set complete, packed in strong carton, and delivered direct to your door is offered by Lennards at the special price of 23/6 carriage paid.

GL525. Set of heat resisting basins, measuring 7 in. in diameter, 6 in. in diameter and 5 in. in diameter. Set of 3 complete **6/-**

GL520. Round Pie Dish, extremely useful, size 7½ in. diameter, 2 in. deep. **2/3**

GL519. Small round Pie Dish, extremely useful size for 2 people, measuring 6½ in. diameter, 2 in. deep. **1/9**

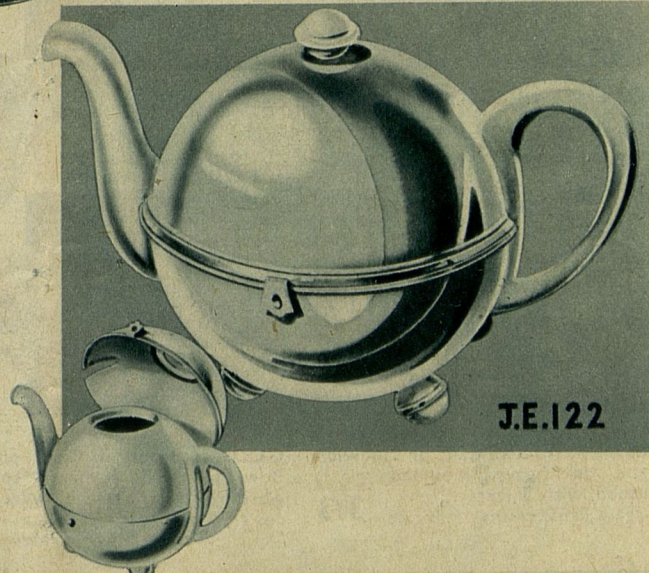
GL516. 2-piece heat resisting Casserole Dish, complete with lid measuring 7½ in. in diameter, overall depth 4 in. An extremely useful dish. Complete **6/-**

GL517. A Casserole Dish in slightly smaller size, contains sufficient for 2 persons, measuring approximately 6½ in. diameter, 3 in. deep. Complete **3/3**

GL521. Oval Pie Dish, ideal for milk puddings, etc. Length 8½ in., width 6 in., 2 in. deep. Each **1/9**

GL522. Glass Souffle Dish. This extremely useful glass dish can be used for a large variety of purposes. 5 in. in diameter and 2 in. deep. Each **2/6**

JE122. The famous Ever Hot Teapot. Full family size, beautiful quality Cream glazed Teapot contained in English chrome plated case, specially designed to keep tea hot for a long time. A delightful and useful gift. **39/6**



J.E.122

LENNARDS MAIL ORDER STORES · BRISTOL · ENGLAND

GLEAMING Glassware AT MODEST COST

GL501



SPECIAL BARGAIN OFFER!

GL501. 7 piece Lemonade or Water Set of modern design, delightfully moulded and fluted glass, delicately tinted. Comprising Jug and 6 Tumblers.

An amazing bargain.

Price **10/-**

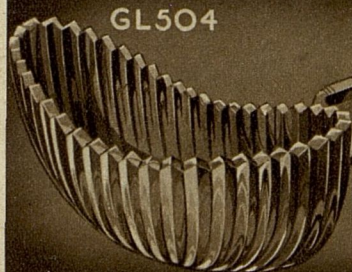
GL537. Gracefully designed Lemonade Set comprising attractive Jug and 6 Tumblers of fine quality clear glass.

Price **13/6**

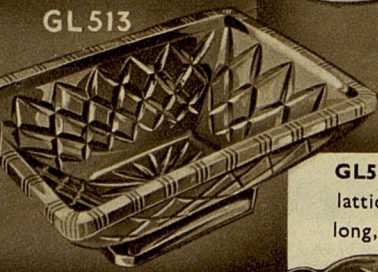


GL537

GL504



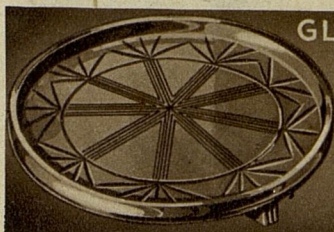
GL513



GL504. Lovely fluted Bowl of crystal clear glass, 10 in. long, heavy quality, beautifully designed. Excellent value.

Price **5/3**

GL513. Beautiful Fruit or Salad Bowl in attractive latticed design, standing on heavy base. 10 in. long, 6 in. wide at top. Wonderful value. Price **4/6**



GL506



GL535

GL506. Attractive Cake or Sandwich Stand in heavy moulded glass, finished with 3 feet. Bargain Price.

Price **3/3**

GL535. Beautiful Fruit or Salad Bowl moulded in heavy sparkling glass in attractive "Waverley" design.

Price **3/11**



GL505

GL505. Attractive Glass Sugar Bowl and Cream Jug, looks like cut glass. The pair.

Price **3/-**

GL511. Glass Vinegar Bottle in modern design of heavy quality tinted glass.

Price **2/-**



GL511

LENNARDS MAIL ORDER STORES · BRISTOL · ENGLAND

Inexpensive Gift SUGGESTIONS

GL528. (Right). Charming Trinket Set made from heavy moulded glass with modern design traced in frosted pattern on clear glass, comprising Tray, 2 Candlesticks, Powder Bowl, Pin Tray and 2 Trinket Jars, a very acceptable gift. Set **22/9**

**ONLY A LIMITED QUANTITY AVAILABLE
FRENCH MANUFACTURE**



GL528



GL530. (Above). Lovely Glass Fruit Set comprising 1 large Fruit Bowl, 8 in. in diameter, and 6 individual Fruit Bowls to match, each 4 in. diameter. Delicately tinted **Pink** shade, beautiful moulded web design. Set complete **8/9**

GL531. (Below, left). Glass Cake Stand in heavy moulded glass on nickel plated base. An inexpensive gift.

Price **5/-**



GL529

GL531

GL529. (Above, right). Afternoon Tea Dish for serving cakes or sandwiches, made from **Amber** tinted glass with chrome plated stem. Price **4/6**



GL515

GL515. Covered Butter Dish made in heavy clear glass, attractively designed with hygienic covering lid. Price **3/9**

GL536. Glass Jam Dish, tastefully designed with nickel plated handle and serving spoon. Price **4/6**

GL536



GL503

GL532

GL503. Condiment Set made from clear moulded glass. Pepper, Salt and Mustard on glass tray. Wonderful value. Price **2/6**

GL532. Condiment Set comprising Salt, Pepper and Mustard pots in clear glass with chrome plated tops and complete with heavy chromium plated tray. Price **8/9**

LENNARDS MAIL ORDER STORES · BRISTOL · ENGLAND



HO122. Aluminium Steamer made from heavy gauge aluminium 8½ in. in diameter and fitted with two stout handles and lid with heat resisting button. Will fit any size pan from 5½ in. to 8½ in. diam. **4/11**

HO113. Aluminium Porringer of heavy gauge made in 2 sections and finished with lid fitted with heat resisting button. Handles are of strong quality, galvanised metal. **6/3**

HO121. Aluminium Casserole. A heavily made Casserole Dish, extremely useful for all types of cooking. Approx. diameter 9 in., fitted with 2 handles and polished lid. **7/3**

HO124. Set of 3 heavy gauge Aluminium Stew Pans fitted with strong galvanised handles and polished aluminium lids with heat resisting buttons. Sizes : 5, 6 and 7 in. diam. Set of 3 **13/9**
Or separately : 5 in. 3/6 ; 6 in. 4/9 ; 7 in. 6/6.

HO117. Aluminium Measuring Jug, 2-pint capacity, graduated in half pints. Heavy quality, fitted with bakelite heat resisting handle. An exceptionally useful article. **4/9**

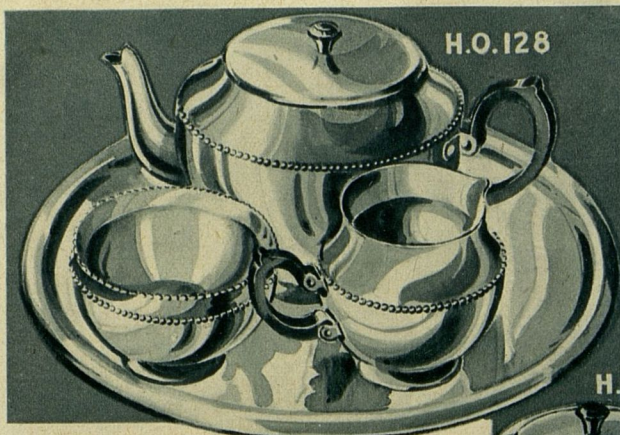
HO116. Aluminium Brew Can. Specially designed for carrying hot liquids for out-of-door purposes. Approx. 1-pt. capacity with specially designed lid and swing handle. Lid can be used as drinking cup. **4/6**

HO123. Fry Pan of heavy gauge polished aluminium with flat round base. 10 in. in diameter, 2 in. deep, galvanised handle 8 in. long. **4/6**

HO114. 6-Cup Aluminium Teapot of modern style, heavy gauge, fitted with heat resisting black bakelite handle, lid fitted with knob to match. Wonderful value. **6/6**

HO115. 4-pint Kettle turned from heavy gauge Aluminium in modern design, fitted with heavy galvanised spout and Black plastic heat-resistant handle grip. Designed to boil water quickly. **8/3**

LENNARDS MAIL ORDER STORES · BRISTOL · ENGLAND



H.O.128

HO128. Aluminium Tea Set, consisting of teapot, cream jug and sugar bowl, on circular aluminium tray. A neatly styled set. Teapot finished with heat-resisting handle. Exceptional value.

Set complete **12/6**

HO129. Café size Teapot. Strongly made in polished aluminium. 7-pint capacity. Strongly constructed and finished with stout handle and balance handle over spout.

Each **12/6**

HO127. Café style Aluminium Teapot, neatly designed and strongly made. Polished finish, fitted with heat-resisting handle and lid button.

Each **4/6**

HO132. Aluminium Soup Plate, turned from heavy gauge aluminium and finished with rolled edge. 9 in. diameter.

Each **1/4**
Or 6 for **7/6**

HO131. Aluminium Plate, stoutly made with turned rim. 8 in. diameter. Suitable for soup or meals.

Each **1/2**
Or 6 for **6/6**

HO126. Aluminium Ladling Can, strongly made and finished with rolled edge for added strength and fitted with strong steel handle. 6 in. diameter, 5½ in. high. Approx. capacity 1 quart.

Each **3/6**

HO130. Chrome-plated Coffee Percolator, full size, made from heavy gauge aluminium. Delightfully styled with hammered pewter effect barrel and heat resisting handle.

Each **21/-**

HO57. Aluminium Dish-Tray, very heavy gauge utensil measuring 15x11 in. Suitable for use as tray or roasting dish.

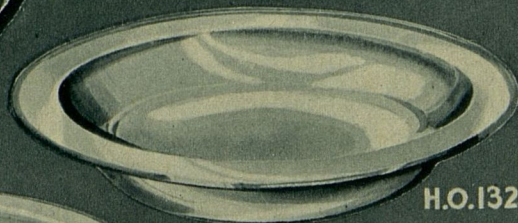
Each **8/6**



H.O.129



H.O.127



H.O.132



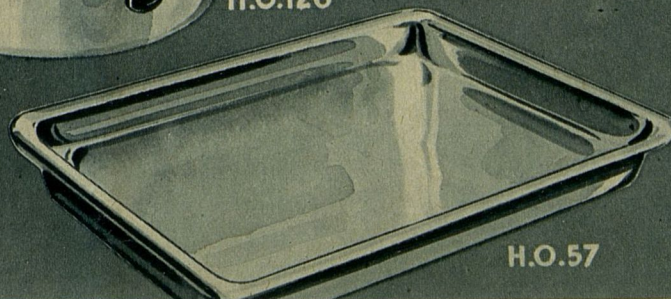
H.O.131



H.O.126



H.O.130



H.O.57

LENNARDS MAIL ORDER STORES · BRISTOL · ENGLAND



HO141. Embossed Aluminium Tray, delightfully designed in heavy quality polished aluminium, diameter 12 in. 3/9
For household or cafe.

HO139. Cake Tin in polished hammered aluminium, useful for ensuring freshness of cakes and attractive on the table, large size, 8 in. diameter, 4½ in. deep. 4/6

HO140. Nickel Fruit Bowl in attractive embossed metal, for use as Cake or Sandwich Dish or Fruit Bowl, 10 in. diameter. 3/6

HO66. Set of 3 Taper Lip Milk or Stew Pans, made from heavy gauge polished aluminium with convenient pouring lip. 5 in. diameter 2/6, 6 in. diameter 3/6, 7 in. diameter 4/6. 9/6
Price per set

HO134. Fish Frier and Basket of heavy gauge mirror finish polished aluminium, for frying fish, chips, etc., Handy family size. 6/6

HO133. Mirror finished polished aluminium Bucket, made from heavy gauge metal with reinforced base and hygienic cover lid, finished with wooden carrying handle. Capacity approx. 2½ gallons. Useful for the kitchen, dairy or sick room. 14/9

HO136. Child's Bedroom Chamber of polished aluminium, with black handle. 3/6

HO137. Polished aluminium Bedroom Chamber, with black handle. 4/3

HO135. Aluminium Stew Pan with Steamer, handy family size, well finished aluminium, complete with two lids allowing for separate usage of each part. 8/9

LENNARDS MAIL ORDER STORES · BRISTOL · ENGLAND

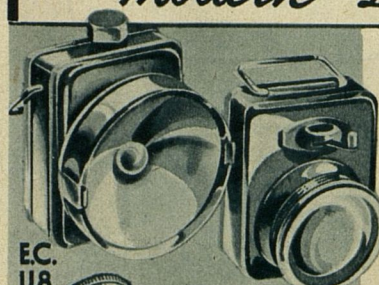


" SILVER SWALLOW " ENAMEL HOLLOW-WARE. LENNARDS present a new range of finest quality British manufacture Hollow-Ware, each article is made from high grade pressed steel and finished with best quality white enamel with contrasting edges. The selection includes many articles indispensable in the home and for the preparation of food.

EH104. SEMI-DEEP WASH-UP BOWL, diameter approximately 14 in.	2/4	EH108. OBLONG PIE DISH, approximately 7 x 5 in.	1/6
EH101. TWO-PINT JUG.	2/3	EH109. MILK PAN, diameter approximately 9 in.	1/3
EH102. FOUR-PINT JUG.	2/9	EH110. DINNER PLATE, diameter approximately 9 in.	1/-
EH103. WASH-UP BOWL WITH TWO HANDLES, diameter approximately 15 in.	2/11	EH114. CASSEROLE WITH COVER, diameter approximately 7 in.	3/6
EH105. CEREAL BOWL, diameter approximately 9 1/2 in.	1/3	EH115. DAIRY BUCKET WITH LID, approximate capacity 2 1/2 gallons.	8/9
EH113. VEGETABLE COLANDER on base, diameter approximately 9 in.	2/6	EH112. ENAMELLED BEDROOM CHAMBER.	3/-
EH106. OBLONG PIE DISH, approximately 5 x 4 in.	1/-	EH117. SOUP PLATE, diameter approximately 9 in.	1/3
EH107. OBLONG PIE DISH approximately 6 x 4 1/2 in.	1/3		

LENNARDS MAIL ORDER STORES · BRISTOL · ENGLAND

Modern Domestic Electric Appliances



EC.118

EC118. Twin Cell Cycle Lamp. An extra strongly constructed lamp with all metal body, finished silver, with plated head. The extra large head diameter of 3½ in. gives a very powerful beam of light. Complete with bracket for cycle, handle for carrying, long life battery and bulb.

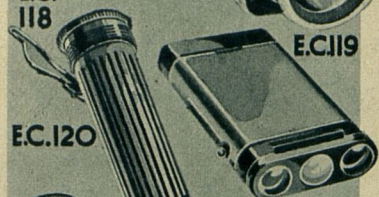
6/6

EC119. Black Enamelled Cycle Lamp, strongly constructed with bulls-eye lens giving powerful beam and fitted with cycle bracket, carrying handle, battery and bulb.

4/3

EC117. Signal Flash Lamp. An all metal Flash Lamp with adjustable spotlight head, showing Red, White or Green light, complete with battery and bulb.

3/9



EC.120

EC.119

EC120. 3-cell Focus Torch. A handsome electric torch, beautifully finished in stainless nickel plate and fitted with large adjustable head, giving a powerful spotlight beam or floodlight as required. Complete with button attachment, battery and bulb.

10/6

EC121. 2-cell Focus Torch as above but slightly smaller size and without button fastening attachment.

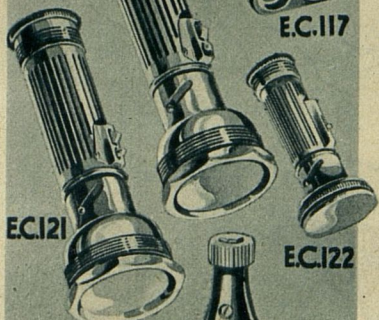
8/3

EC122. Single cell Electric Torch, convenient size for handbag or overcoat pocket, fitted with spotlight or floodlight adjustable head, complete with battery and bulb.

3/3

EC104. Electric Cycle Dynamo Set, British Made and absolutely dependable with large cylindrical headlamp, bracket fitting complete with rear lamp, dynamo and all necessary fittings.

27/6



EC.121

EC.117

EC115. "PRILECT" Travelling Iron. A soundly constructed all British manufactured electric iron, especially useful for travellers. With adjustable handle, flex and plug, the iron can be packed into very small metal box provided. Weight only 2 lbs. Voltage 200-250.

10/6

EC116. "PRILECT" Electric Boiling Ring. A very useful appliance for either cooking, boiling or heating in a small kitchen. Substantially made on chrome base with silvered top incorporating electric elements. Voltage 230. Size: 7½ in. square.

14/6

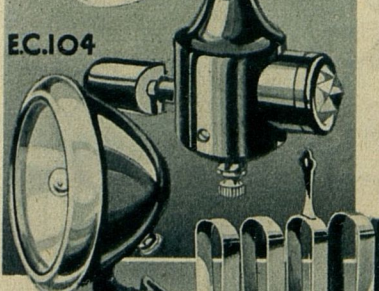
Will take an average size pan or kettle.

EC109. Reflector Screen Fire, fitted with highly polished reflector, delightfully finished in oxy-copper, or oxy-silver. Providing substantial heating and standing on large firm base to ensure stability.

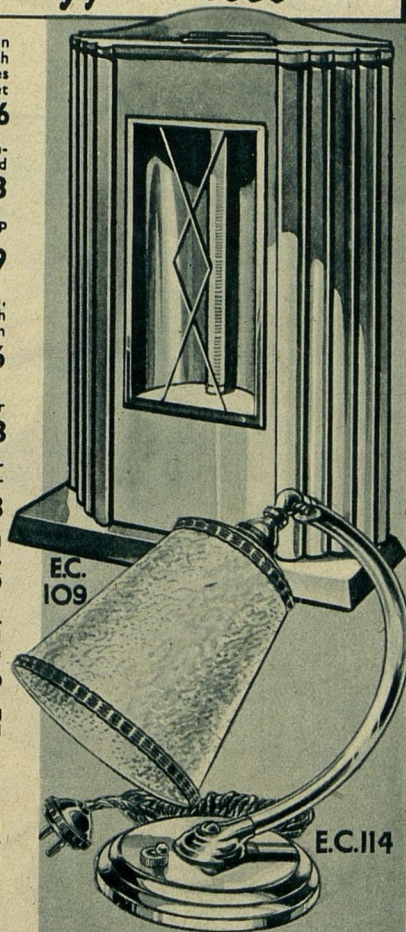
21/-

EC114. Solid Chrome Table Lamp, delightfully styled and fitted with artistically designed plastic shade. Adjustable nickel screw fitting and independent switch. Complete with flex and 2-pin plug.

24/6

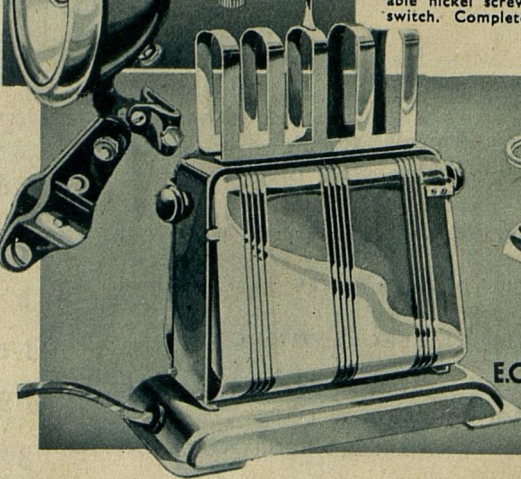


EC.104



EC.109

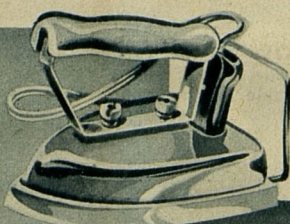
EC.114



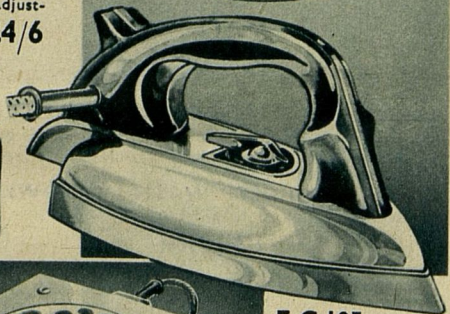
EC.123

EC123. "PRILECT" Electric Toaster. Handy Electric Toaster, double sided, quickly produces two slices of toast at the same time. Finished in high quality nickel plate and enamelled base, also fitted with nickel plated toast rack. Complete

19/6



EC.115



EC.116

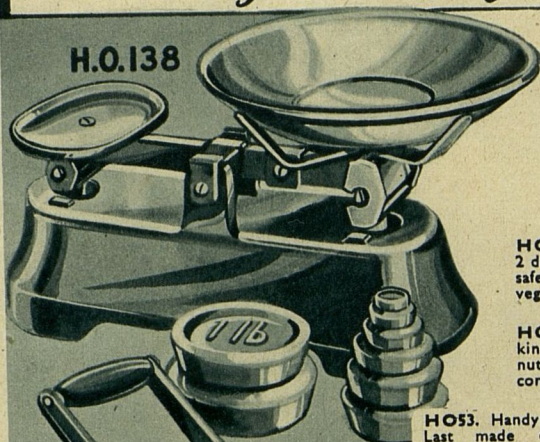
EC.105

EC105. "PRILECT" Heat Control Electric Iron, completely automatic control, adjustable to suit all fabrics. Absolutely safe in use and fire-proof. Streamlined handle and nickel plated sole plate. Fully guaranteed.

31/6

LENNARDS MAIL ORDER STORES · BRISTOL · ENGLAND

Cooking, Heating and Domestic Needs



H.O.138

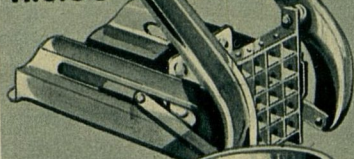
HO138. Very useful Household Scales on solid cast iron base, finished with pleasing Green enamel, removable pan with balance adjustment, complete with set of weights weighing $\frac{1}{2}$ oz. to 2 lbs., giving total of 3 lbs. 15 ozs.
Complete Set **16/6**

HO55. Modern style Potato Chipper, makes 2 dozen perfect chips at one stroke. Strong and safe in use, can be used for fruit or vegetables. **5/9**

HO56. Food Mincer and Chopper, chops every kind of meat, raw or cooked, vegetables, fruit, nuts, etc., strongly constructed and complete with 4 graduated cutters. **8/9**

HO53. Handymans Cobbler Set, comprising very useful Shoe Last made of cast iron usable in every position required for the full repair of shoes, specially designed Shoe Hammer with rounded end fitted with strong ash handle, strong Shoemaker's Knife with steel blade and Shoemaker's Finishing Tool. Complete **10/-**

H.O.55

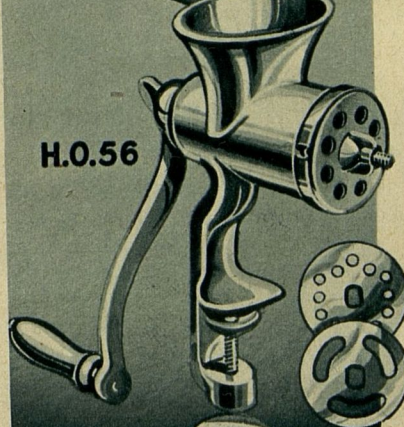


HO112. "Buflam" Heating Stove, De Luxe Model with high heat output, soundly constructed and safe in use. Will burn for 22 hours at one filling. Designed on completely modern lines and fitted with brass fount. An exceptionally useful heater. **30/6**

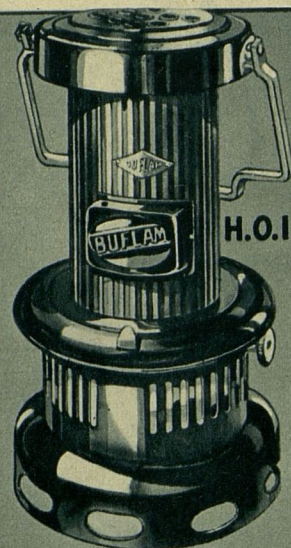
HO111. "Buflam" Stove. This streamlined Boiling Stove is 43% more efficient than previous models. Gives 12 hours cooking at one filling. May also be used for heating stove for protection against frost. A thoroughly efficient and reliable stove finished with bright rust-proof paint in Red, Black and Silver. **19/6**

HO109. Blow Lamp suitable for both the handy-man and the craftsman in highly polished finish, made throughout of high quality 70/30 Virgin Brass, quick starting, safe and completely efficient in operation. **33/-**
Exceptional Value

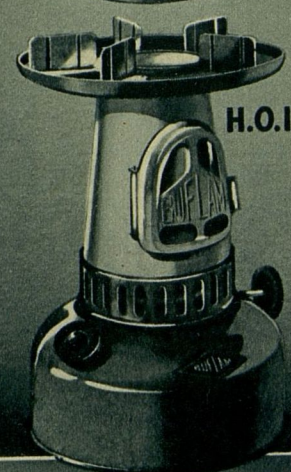
H.O.56



HO110. The "Buflam" Pressure Stove. Essentially useful stove for campers, hikers, farm workers and all who require a cooking stove for emergency. Specially manufactured with detachable legs for neat packing. Finished in polished brass with reliable roarer burner. Suitable filling $1\frac{1}{2}$ pints gives cooking period of $4\frac{1}{2}$ hours and will boil 1 quart of water in 3 minutes. **25/6**



H.O.112



H.O.111



H.O.53



H.O.109



H.O.110

LENNARDS MAIL ORDER STORES · BRISTOL · ENGLAND



CS 309

CS 314

CS314. Children's **Brown** or **Black** Oxford Shoes, strongly made from good quality leather, finished with medium weight leather sole and solid leather heel.

Sizes :	Per Pair
7-10	13/6
11-1	14/6
2-5	18/6

CS322. Child's neat Strap Shoe, in good quality **White** washable grain leather, attractively styled and sturdily made.

Sizes :	
7-10	8/11
11-1	9/11

CS315. Children's Apron Fronted Shoe, strongly made from smooth **Brown** leather, smartly styled and easy fitting. Leather sole and heel.

Sizes :	
7-10	13/11
11-1	15/6
2-5	17/6

CS309. Children's Sandals made from sturdy **Beige** coloured leather with stitched rubber sole and heel. Strap finished with plated buckle.

Sizes :	
3-6	7/6
7-10	8/6
11-1	9/6
2-5	11/6

(Not Illustrated)

CS313. Similar style Sandal to above in superior quality **Dark Brown** leather with natural crepe rubber sole.

Sizes :	
3-6	11/9
7-10	13/9
11-1	15/9
2-5	19/9

CS310. Child's Snug Style Shoe in neat **Brown** shade or **Black**. Soft quality leather uppers and medium weight leather sole and heel.

Sizes :	
7-10	13/-
11-1	14/6
2-5	18/6

CS311. Special quality Ankle-Strap Shoe, in neat **Tan** shade. Soft pliable uppers and leather sole and heel. A comfortable shoe for growing feet.

Sizes :	
7-10	13/-
11-1	15/6
2-5	17/6



CS 311

CS 310

CS 315

CS 322

LENNARDS MAIL ORDER STORES · BRISTOL · ENGLAND

WS262. Lady's Sandal Shoe in very smart up-to-date style, with anklet strap, in nice shade of **Tan** leather. With Cuban heel and light-weight leather sole. A very attractive Shoe. **15/9**

WS264. Lady's White Holiday Shoe, very attractive style in suedette material with Cuban heel and light-weight leather sole. A charming shoe for the very low price of **11/9**

WS265. Lady's Sandal, designed for maximum comfort with open sides and anklet strap. Smooth **Tan** leather, finished with medium covered heel and light-weight leather sole. **13/6**
Wonderful value.

WS261. Lady's White Wedge Sandal. Delightful style in good quality **White** waterproofed canvas material, easily cleaned, and finished with leather sole and heel. **16/6**
Attractive value.

WS263. Lady's Sandal in nice quality smooth leather, **Beige** colour, with high-back and anklet strap. Flexible crepe rubber sole and heel. **22/-**
Ideal beach or holiday shoe.

WS260. Lady's Sandal in good quality Elk. **Off-White**, designed for comfort with flexible crepe rubber sole and heel. Very good value. **23/3**

It is important when ordering to state page number and catalogue number of article required, and normal size worn. If in doubt send pencilled tracing of foot



WS 262



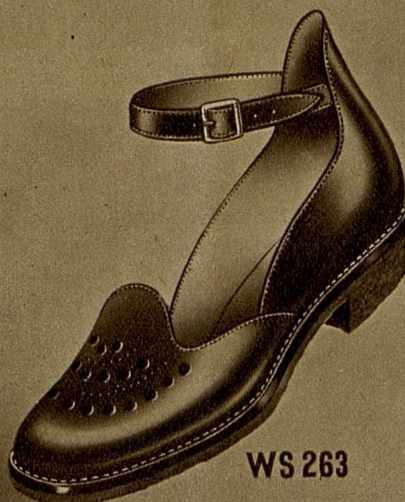
WS 264



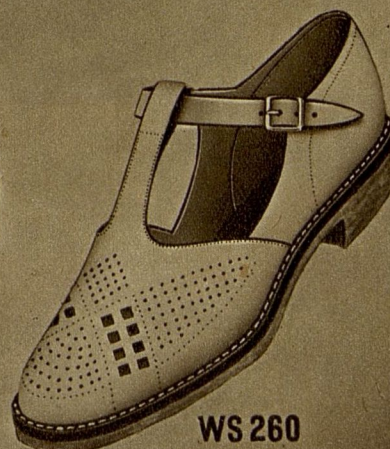
WS 265



WS 261



WS 263



WS 260

LENNARDS MAIL ORDER STORES · BRISTOL · ENGLAND



WS 284



WS 281



WS 285



WS 283



WS 282



WS 280

NEWEST STYLES FOR 1950

WS282. Ladies Shoe in fine quality Glacé Kid. Court Style with anklet bracelet in the new **Light Navy** shade. Covered Cuban heel and light-weight sole. A charming shoe.

28/6

WS283. Ladies High Grade Fashion Shoe, in superior quality **Black Suede**, with ankle bracelet. An extremely smart model shoe with 2½ in. covered heel and light-weight sole. A very dressy shoe.

30/11

WS284. Ladies Ankle Strap Court Shoe in good quality **Black Suede**, finished with attractive bow at front. Medium heel and light-weight leather sole. A good general purpose dress shoe.

24/6

WS280. Ladies Platform Shoe. Soft quality Glacé Kid, Court Style, with anklet bracelet. Finished with attractive bow at front. A very smart and fashionable shoe.

25/11

WS281. Ladies Shoe of extremely attractive design. Court Style, in **Chocolate Suede**, with high collar effect at back, and cross-over instep straps. 2½ in. covered heel and leather sole.

33/6

WS285. Ladies Shoe of distinctive style, in high-grade **Black Suede**, finished with high collar and anklet bracelet, and neatly fashioned instep strap.

32/11

LENNARDS MAIL ORDER STORES · BRISTOL · ENGLAND



ELEGANTLY STYLED COURT SHOES

WS273. Ladies Court Shoe in soft quality Glacé Kid, deep Tan shade. Nice style of shoe, well balanced, with Cuban heel and leather sole. **21/-**

WS276. Ladies Court Shoe in soft quality Black Glacé Kid, attractively finished with bar front and contrasting bow in suede. Medium heel and leather sole. **20/11**

WS274. Ladies Court Shoe, newly designed in good quality Black Suede on American three-tier wedge pattern, covered in a contrasting patent finished material. A very attractive shoe. **36/-**

WS277. Ladies Court Shoe, exquisitely styled in fine quality Navy Suede. A very dressy and attractive shoe, finished with a covered French heel and leather sole. Exceptional value. **32/6**
Also available in Black or Brown, as above description. **32/6**

WS275. Ladies Court Shoe, of very comfortable shape, neatly styled and finished with smart bow and buckle at front, with a medium covered heel and leather sole. Brown only. Specially priced at **27/6**

WS272. Ladies Court Shoe in fine Black Glacé Kid, specially designed with high-lift toe for extra roominess, finished with neat bow in suede and buckle at front. Medium heel and leather sole. A high grade shoe at the low price of **26/6**



LENNARDS MAIL ORDER STORES · BRISTOL · ENGLAND

Stylishly Designed— Comfortable in Wear

WS266. Ladies "ORTHO" Shoe. This model is specially designed to fit difficult feet. Uppers are of soft texture **Black** Glacé Kid, sole and heel of English leather. This shoe has the approval of eminent orthopaedic authority and is obtainable in half-sizes and normal, medium and wide fittings. A very reliable and comfortable shoe. **33/-**
In **Black** only.

WS269. Ladies Gibsonette Style Shoe, in soft quality **Navy** Glacé Kid. This attractive styled shoe is specially designed to give the appearance of a smaller size than that actually worn, and is a very neat style. **27/3**

WS268. Ladies **Black** Glacé Kid Shoe, designed on a comfort-fitting last, for the young matron. Materials used are best selected quality, and finish and workmanship are of high grade. **24/-**
Special low price of

WS267. Ladies Gibsonette Shoe, very smartly styled in smooth **Brown** leather. Very comfortable shape, combining neat smart appearance. This shoe represents maximum value at **19/3**

WS271. Matron's Comfort Shoe, specially designed, with uppers cut in one piece from soft quality **Black** Glacé Kid for extra comfort. Low heel and light-weight leather sole. An ideal shoe for the middle-aged. **24/-**

WS270. Ladies Court Shoe in smooth **Dark Brown** Glacé leather, neatly designed with concealed elastic gusset at front for additional comfort in wear. A sensible style, **24/-**
nicely made.

WS 270



WS 266



WS 268



WS 269



WS 267



WS 271



LENNARDS MAIL ORDER STORES · BRISTOL · ENGLAND

SMARTLY DESIGNED FOR TOWN AND COUNTRY

WS291. Ladies' Walking Shoe of distinctive design. Made from fine quality **White Elk** with contrasting **Blue** apron front and heel strap, finished with crepe rubber sole and heel. A very useful hard-wearing walking shoe.

Per Pair **41/6**

WS290. Ladies' Shoe, superbly styled in solid **White Elk** leather, with **tan** grained apron front, of Norwegian pattern. This is an exceedingly comfortable shoe and will provide very hard wear. Finished with crepe rubber sole and heel.

Per Pair **41/6**

WS287. Ladies' Gibsonette Shoe, a very smart and neat walking shoe, made from rich **russet** shade smooth leather. Beautifully finished with solid leather sole and heel. Medium weight. Special production price of

Per Pair **21/6**

WS286. Ladies' Combination Shoe, sensibly styled from smooth **Brown** leather, and **Golden Russet** suede. A beautifully made shoe which will stand up to hard wear for walking and hiking.

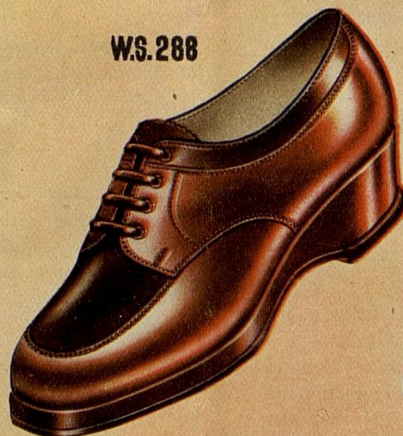
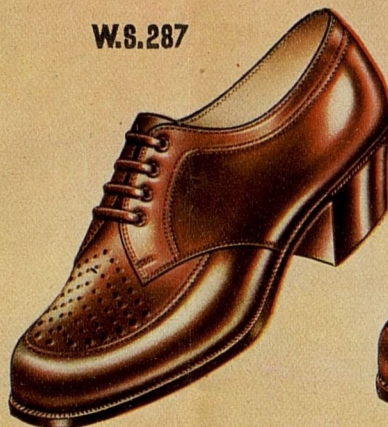
Per Pair **30/6**

WS289. Ladies' Gibsonette Walking Shoe, in rich **Brown** pebble-grained leather with smooth leather apron front and saddle. A very useful and hard-wearing shoe, at the low price of

Per Pair **21/-**

WS288. Ladies' Latest Style Platform Wedge Shoe, beautifully made from two-toned **Tan** and **Brown** leathers, of soft and durable quality. A very useful and attractive shoe.

Per Pair **34/6**



LENNARDS MAIL ORDER STORES · BRISTOL · ENGLAND



W.S.292



W.S.295



W.S.294



W.S.297



W.S.299



W.S.298

Specially Selected at BARGAIN PRICES

WS295. Ladies' Stout Walking Shoe, with platform wedge. Beautifully styled with interlaced front and strap-over fastening. Made in good quality **Chocolate** tone suede and smooth beige leather and finished with crepe rubber sole and heel. A most attractive and useful shoe.

Per Pair **30/9**

WS294. Ladies' Court Shoe. Charming style in soft quality **Navy** Glace Kid with suede toe inset, finished with attractive bow at front. A neat and stylish shoe of high quality.

Per Pair **32/6**

WS292. Ladies' One-bar Shoe in good quality soft smooth leather, of comfortable shape and design, with medium comfort heel, finished with rubber top pieces. Medium weight English leather sole. This is a particularly good value shoe. Offered in both **Brown** and **Black** at the very low price of

Per Pair **17/6**

WS299. Ladies' Shoe, specially designed to withstand hard wear and rough weather. Made from good quality pebble-grained **Tan** leather with coxcomb front and finished with storm welt and crepe rubber sole and heel. Big value for

Per Pair **24/6**

WS298. Ladies' Crepe Soled Bootie, made from rich **Tan** grained leather with fringed collar and finished with soft fleecy lining. A warm, comfortable and water-proof boot for winter weather at the low price of

Per Pair **30/9**

WS297. Ladies' Fancy Court Style Shoe, made on comfort-fitting last from soft quality **Black** or **Brown** leather with medium heel and lightweight leather sole. Amazing value.

Per Pair **19/6**

LENNARDS MAIL ORDER STORES · BRISTOL · ENGLAND



H.B.103 Handbag, styled from Morocco grain, indistinguishable from real leather, useful pouch style. Fitted with inner pocket, complete with mirror. Strong gilt frame fastening with novelty snap clasp and two handles. Fashionable colours of London Tan, Beige, Red, Navy, Nigger or Black.

12/9

H.B.107. Vanderbilt Handbag, strongly and roomily made from Morocco grained real leather, or charming crocodile effect. Beautifully finished with matching lining, complete with wallet, mirror and pocket. The frame is finished with handle, safety retainers and lock with key. Colours: Morocco Grained Hide, Black, Navy or Nigger, also Brown Crocodile effect.

35/9

H.B.105. Fashionable Handbag styled from leather grained effect plastic, with bar-top frame and handle, attractive novelty gathered front and piped edges. Colours: Black, Navy, or Nigger.

21/9

H.B.104. Novelty Styled Handbag in attractive plastic material with bar-top frame handle and finished with beautiful fabric lining, complete with mirror and pocket. Colours: Black, Nigger, or French Grey.

18/9

H.B.102. A very smart Handbag, roomily made from Morocco grained Plastic and well finished with stout frame and handle. Superior quality lining, complete with mirror and pocket. Colours: White, Black, Navy or Nigger.

19/6

H.B.101. Novelty Handbag in new "Gladstone" Style, made from beautifully finished Plastic material indistinguishable from real crocodile. Finished with strong gilt frame and handle, complete with mirror and pocket. In Brown Crocodile shade only.

24/6

H.B.106. A very smart Handbag styled from Plastic in perfect imitation of snakeskin. A large roomy bag, beautifully finished with fabric lining, two pockets and mirror and bar-top fastening with handle. In Natural colours of Grey or Fawn Snakeskin.

24/9

LENNARDS MAIL ORDER STORES · BRISTOL · ENGLAND

Dainty Undies for MILADY



LUC54. Lady's Vest and Pantee Set made from heavy quality Art. Silk Locknit in fancy lace weave. Fitting Vest and elastic waist Pantees. A very serviceable garment which washes perfectly. In White or Peach. W. size only. Per Set **7/11**

LUC64. Underskirt of superior quality Locknit, featuring round neck, built-up shoulders and shaped waistline. The garment is styled to fit comfortably and all seams are perfectly finished. In Lagoon, Peach or Nil.

W. size 8/3
W.X. size 8/9
O.S. 9/3

LUC74. Cami-Knicker of beautiful quality, made from rayon-Satin, smartly cut throughout and finished with reinforced seams and shoulder straps. Shades of Lagoon, Peach or Nil. W. size **11/6**



LUC53. Heavy quality Art. Silk Locknit Pantees. This garment will stand repeated launderings and is amply cut with elastic waist, gusseted legs and all seams well finished. Shades of Ivory, Peach, Lagoon, Sky or Nil.

W. size 4/8
W.X. size 5/6
O.S. 6/3



LUC78. Ladies' Locknit Briefs, delightfully styled from superior quality locknit, finished with elastic waist band and reinforced seams. An excellent garment in shades of Peach or Ivory.

W. size only **3/6**



LUC70. Ladies' Slip and Knicker Set, beautifully made from high quality gossamer-weave locknit, and delightfully trimmed with lace insets. The slip is styled with well shaped waist and the pantees are roomily cut and finished with lace motif and trimming. In shades of Peach or Ivory.

W. size only. Per Set **12/11**

LENNARDS MAIL ORDER STORES · BRISTOL · ENGLAND

Charm and
Comfort here



LUC63. Ladies' Opera-Top Cami-Knickers, made from soft quality gossamer-weave locknit. Attractively styled with large lace insets on bodice and legs. Finished with shoulder straps and lace edgings. In **Peach and Ivory.**
Size: W. only. **9/6**

LUC52. Slip and Knicker. Set in heavy art. crepe. French Knickers with elastic waist and kite gusset. Available in lovely shades of **Peach, Sky, Lagoon, Nil and Ivory.**

W. 16/6, W.X. 20/-
O.S. 22/6

LUC76. Slip and Knicker Set in heavy quality Rayon locknit. The set is attractively embroidered and all seams overstitched. The slip is well cut with shoulder straps and the knickers are roomily made. In shades of **Peach, Sky and Ivory.**
W. 12/6. W.X. 14/-

LUC77. Ladies' Locknit Nightdress; made from fine quality rayon locknit, this is an excellent washing garment attractively embroidered and finished with short sleeves and tie at back. In **Peach only.**
W. 13/6, W.X. 14/11

LUC62. A Delightful Nightdress made from gossamer-weave locknit of superfine quality. Delightfully styled and lavishly trimmed with delicate lace insets. Ankle length with short sleeves. In **Peach only.**
W. **13/6**

LUC65. Heavy Quality Locknit Knickers made in directoire style from beautiful washing fabric and finished with elastic waist and legs. Colours: **Peach, Lagoon and Nil.**

W.X. 7/- O.S. 7/6

LUC72. Ladies' French Knickers, made from fine gossamer locknit and beautifully trimmed with delicate lace. Fully cut with elastic top.

Colours: **Peach and Ivory.**

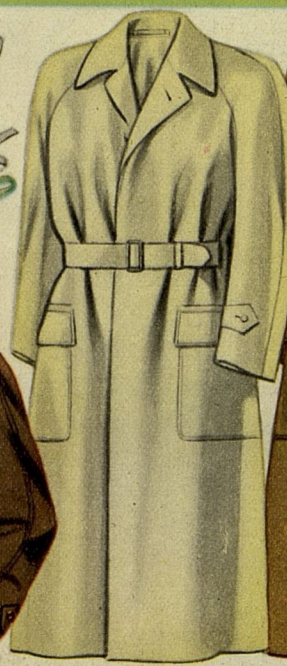
6/6

LENNARDS MAIL ORDER STORES · BRISTOL · ENGLAND

For comfort in the Rain



WRI03. Dutch Style Rain Hood made from strong Plastic in Blue or Green. 1/6



B WRI01. Ladies' Mackintosh with Hood attached, fashionable style in fine quality proofed printed cotton, neat designs on grounds of Dark Blue or Dark Green. Hood and shoulders lined. Finished with Belt and Slip pockets. Lengths 42 in. 37/3 44 to 46 in. 38/9.

WRI02. Ladies' Raglan Style Raincoat, made from fine quality double textured Indiana cotton, lined shoulders, vented back, large patch pockets and all round belt. Roomily cut and smartly made. W. lengths 44 in. to 46 in. 44/6. Maids lengths, 42 in. 40/6.

MR110. Gent's Single Breasted Mackintosh, a double textured Indiana Raincoat, in Light Putty shade, with extra lining and two large patch pockets, button to neck style and all round belt. Guaranteed waterproof. Chest measurements 34-44 in. 45/-

MR108. Gent's Waterproof Coat of fine double texture heavy quality proofed cotton in dark shade of Fawn. Single breasted style with all round belt. Chest measurements 36-44 in. 70/-

MR112. Gent's Gabardine Raincoat. A tailored raincoat made from fine quality Gabardine with check cotton lining and rubber inter-lining at shoulders. In pleasing Fawn shade, finished with all round belt, sleeve tabs, two slit pockets and inside pocket. Chest measurements 38 to 44 in. 98/6

MR107. Gent's Light Weight Indiana Mackintosh in medium Fawn shade, single breasted style with belt all round, fully proofed. Will fold small to carry in pocket. Chest measurements 38 to 42 in. 45/- 44 in. 50/-

OD113. Ladies' Umbrella, all metal frame, strong black cover, and attractive plastic handle. 25/-



OD116. Gent's Umbrellas made on the famous Fox frames and covered with durable Black Cotton. Finished with attractive crook handles 25/-



CR102. Boy's Navy Gabardine Raincoat, in full double breasted style made from superior quality Gabardine with check lining and extra rubber inter-lining at shoulders. Finished with belt and two pockets. Lengths: 28-32 in. 62/9

Lengths: 34-38 in. 70/-



CR101. Kiddies' Mack and Sou'Wester Set, made from fine cotton backed with rubber, in pretty shades of Blue, Green and Red. Lengths: 26 to 32 in. Set 21/-

LENNARDS MAIL ORDER STORES · BRISTOL · ENGLAND

Newest Fashionable Knitwear



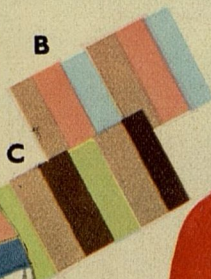
LUC79

LUC79. Horizontal Striped Jumper, made from finely knitted pure wool, in smart contrasting striped effect, shaped waist, short sleeves. Colour combinations A, B, and C as illustrated. Size W. only. **21/-**

LUC82-83. Contrasting Twin Set. A very smart effect is obtained in this Set of fine quality Wool knitted in closely ribbed style, the Cardigan being in an attractive contrasting shade to the Jumper.

LUC82. Jumper. Shade: Lime Green, Ocean Blue, Pearl Grey. **LUC83.** Contrasting Cardigan Dark Green, Deep Ocean, Dusty Pink. Jumper, W. size 18/6. Cardigan, W. size 24/6.

Complete Set **42/6**



Jumper LUC82

Cardigan LUC83



LUC66



LUC68



LUC80

LUC68. A Fine Wool High Necked Jumper with short sleeves, featuring new yoke effect, in colours Sky Blue, Dusty Pink, Lemon, Nil Green or Cherry. Sizes: W. 17/6. O.S. 19/6. Button Front Cardigan to match. W. size 22/6. O.S. size 25/-.

LUC80. A Very Neat Jumper with round neck and plain yoke effect with fancy bodice and short sleeves, in shades of Sky, Dusty Pink, or Leaf Green. W. size 16/3. O.S. 19/6. Plain Button Front Cardigan to match. W. size 21/9. O.S. 24/6

LUC66. Charming Short Sleeved Jumper, with round neck and knitted from fine quality wool in dainty motif weave. In smart shades of Sky Blue, Dusty Pink, Lemon, Nil Green or Cherry. W. size, 16/6. O.S. size 19/3. Button Front Cardigan to match. W. size 21/6. O.S. size 24/-

LUC84. A Smart Jumper of High Grade Wool, knitted to give novel self stripe effect, with short sleeves and new straight neck line. In shades of Dusty Pink, Lime Green and Sky Blue.

W. size 17/3. O.S. 19/9

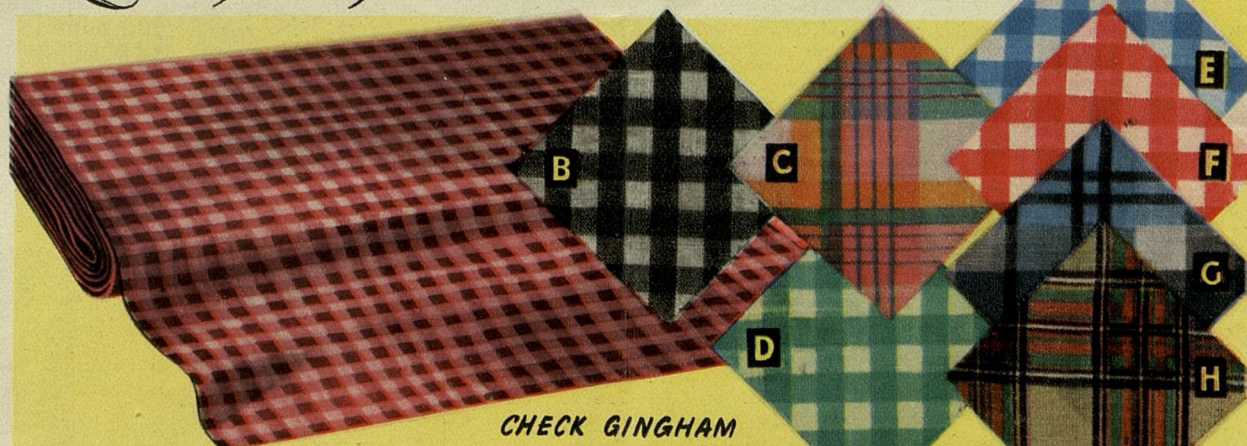


LUC84



LENNARDS MAIL ORDER STORES · BRISTOL · ENGLAND

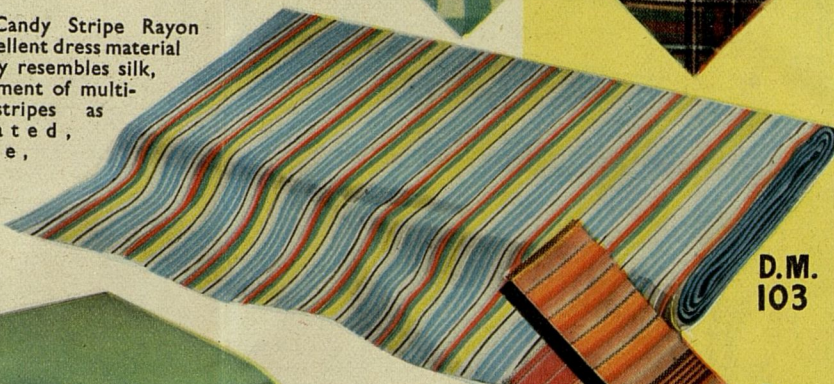
Lovely English DRESS MATERIALS



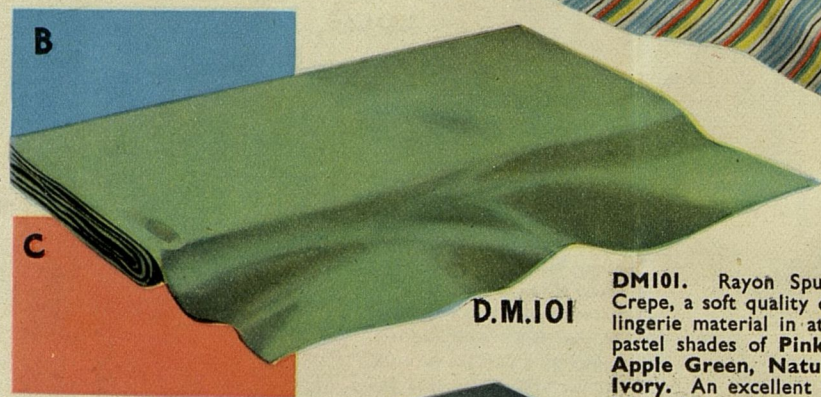
CHECK GINGHAM

DM104. Finest Quality Cotton Gingham, made from high grade yarns in gay woven checks as illustrated, absolutely fast colours and guaranteed washing material. 36 in. wide. Per yd. **4/3**

DM103. Candy Stripe Rayon Spun, an excellent dress material which closely resembles silk, in an assortment of multi-coloured stripes as illustrated, 36 in. wide, Per yard **4/11**

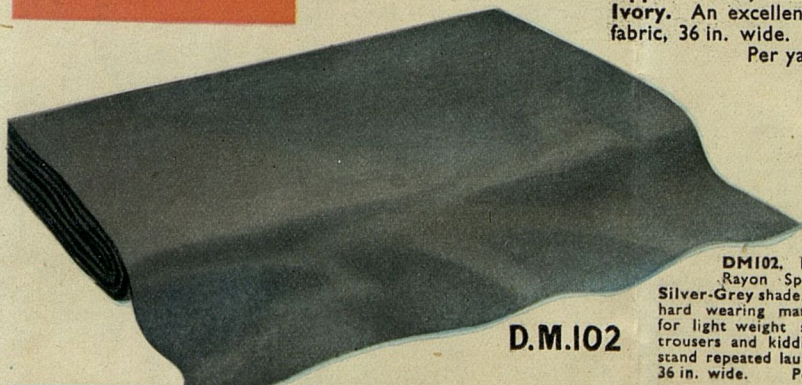


D.M. 103



D.M.101

DM101. Rayon Spun Moss Crepe, a soft quality dress or lingerie material in attractive pastel shades of Pink, Blue, Apple Green, Natural and Ivory. An excellent washing fabric, 36 in. wide. Per yard **4/6**



D.M.102

DM102. Heavy Quality Rayon Spun in smart Silver-Grey shade. An excellent hard wearing material suitable for light weight suits, dresses, trousers and kiddies wear, will stand repeated laundering 36 in. wide. Per yard **5/6**

LENNARDS MAIL ORDER STORES · BRISTOL · ENGLAND

High Grade BED LINEN AND BLANKETS



BL84. Attractive Jaspe Bedspread in heavy quality cotton of Biscuit shade with floral patterns in **Blue, Rose, Lemon or Leaf Green.** **23/11**
Size : 70 x 90 in. Each

BL89. "Dorma" White Cotton Pillow Cases. 20 x 30 in. Each **3/9**

BL109. Extra Quality "Dorma" Sheets of fine texture White Cotton. Size 54 x 90 in. 13/9 each. Size 70 x 90 in. 19/6. Size 80 x 100 in. 21/9 each.
BL111. "Dorma" Heavy Bleached Cotton Twill Sheets, 70 x 100 in. 19/10 each.
BL112. Heavy Quality Unbleached Sheets, 70 x 90 in. 15/9 each.

BL83. Turkish Type Hand Towels in attractive coloured woven stripes. Size : 22 x 24 in. Each **4/6**

BL115. Extra Large Pure White Bath Towel. Size : 24 x 41 in. Each **5/6**

BL82

BL77

BL80

BL82. Super Quality All Wool Blanket in **Scarlet Red** with woven stripe border. Size : 60 x 80 in. Each **25/6**

BL80. Travel Rug of extra quality wool in attractive Tartan patterns. Size : 60 x 72 in. Each **42/6**

BL72. All Wool White Blankets of best quality English manufacture. Size : 64 x 84 in. Each **29/6**

BL77. Super-Soft Flannelette Blanket with beautiful fleecy finish. Size : 68 x 88 in. Each **16/6**

BL75. Superior Quality All Wool Coloured Blankets, pastel shades of **Sky Blue** or **Rose**, also **Camel**. Size : 60 x 80 in. Each **32/9**

BL81. Soft Quality **Silver/Grey** Blanket, all wool. Size : 60 x 80 in. Each **25/11**

BL81

LENNARDS MAIL ORDER STORES · BRISTOL · ENGLAND

BEST QUALITY ENGLISH



DS101. The "York" Dinner Set, a handsome Dinner Set of 26 pieces in fine quality high glaze earthenware tastefully decorated with floral sprays in attractive colouring. Comprising 6 Large Dinner Plates, 6 Dessert Plates, 6 Soup Plates, 3 Meat Serving Dishes, 2 covered Entrée Dishes and 1 Gravy Boat.

Set **59/6**



TS109. The "York" Tea Set, a dainty 21 piece Tea Set to match the "York" Dinner Set, in same high quality decorated glazed earthenware, this attractive Tea Set comprises 6 cups and saucers, 6 tea plates, 1 bread and butter plate, sugar basin and cream jug.

Set **23/9**

TS114. "York" Teapot Set, an elegant set in heavy quality glazed earthenware in "York" floral design, comprising teapot and stand, cream jug and sugar basin.

Set **13/9**



TS102. Set of 3 Old English Style Earthenware Jugs, made of heavy quality high glazed earthenware with attractive bouquet design in beautiful colours, jug capacity 1½ pt., 1 pt., and ½ pt.

Set of 3 Jugs **11/6**



TS111. 7 Piece "York" Fruit Set, delightfully styled Fruit Set in similar high quality decorated earthenware. Comprising 1 large serving bowl and 6 individual dishes.

Set **9/6**



TS103. "Bouquet" Teapot, a gracefully styled Teapot with attractive floral design under superfine glazed best quality earthenware.

6-cup size. **5/6**

LENNARDS MAIL ORDER STORES · BRISTOL · ENGLAND

TEA AND DINNER WARE

30

DS102. The "Bristol" Dinner Set, a superb Dinner Set of good quality earthenware, comprising 26 pieces tastefully designed in **Cream** with pleasing "grass edge" border of **Blue/Green**. Comprising 6 large Dinner Plates, 6 Dessert Plates, 6 Soup Plates, 3 Meat Serving Dishes, 2 covered Entree Dishes and 1 Gravy Boat. Set **55/6**



TS106. Set of 3 Jugs of beautiful **Cream** glazed earthenware with delightful coloured Mimosa hand-painted design. Jug capacity 1½ pt., 1 pt. and ½ pt. Set of 3 Jugs **11/6**



TS110. 21-Piece "Bristol" Tea Set. A delicately designed Tea Set, similar to Dinner Set, of fine quality glazed **Cream** earthenware with **Blue/Green** "grass edge" design, comprising 6 Cups and Saucers, 6 Tea Plates, 1 Bread and Butter Plate, Sugar Basin and Cream Jug. Set **21/-** Special price.

TS108. Coloured Plastic Drinking Beakers, approximately ½ pt. size in pastel shades of **Pink, Green and Primrose**, 10½d. each or 5/- for 6 Beakers. (State Colour when ordering.)



TS112. "Pastel" Teapot Set, charmingly styled in heavy quality Old English earthenware and beautifully coloured in plain pastel shade and finished cream inside, comprising teapot, raised teapot stand, cream jug and sugar basin. Colours: **Rose/Cream, Jade/Cream, Beige Pink/Cream.** Set **15/6**

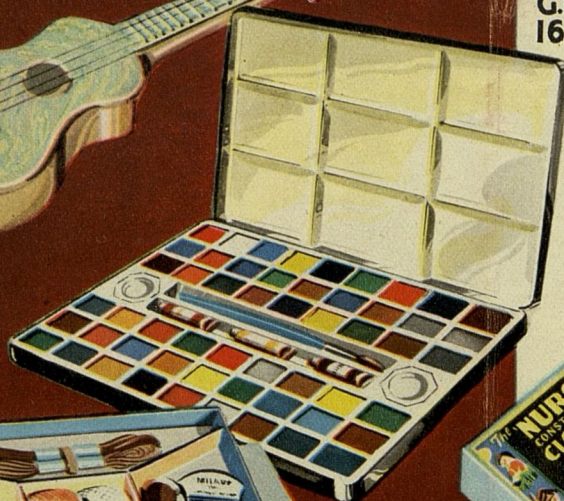
TS113. Breakfast Teapot, heavy made Teapot in thick quality earthenware with pleasing glazed finish in plain **Brown**. 8-cup size 3/6. 6-cup size 2/9. 4-cup size 2/6. 2-cup size 2/-.

LENNARDS MAIL ORDER STORES · BRISTOL · ENGLAND

G.T.
139



G.T.
163



O.D.
105



G.T.
162



G.T.
161



G.T.
130

GT163. Giant Paint Box, instructive and educational, gives hours of amusement. The Paint Box comprises 54 artists water colours, 3 tubes of colour, paint brush and mixing palette.

2/11

GT139. Plastic Toy Ukelele, measuring 13 in. long, this beautiful toy is an exact replica of the genuine instrument. Full instructions for playing a tune are given on the box, complete with plectrum.

4/11

OD105. "Milady" Needlework Companion. A useful sewing set for any girl or for use in the home, well boxed and containing 8 balls of cotton, 2 skeins of embroidery cotton, 2 reels of cotton and numerous shades of mending cottons.

Per Box 3/6

GT161. Cowboys and Indians. Lifelike models of Cowboys and Indians in active fighting positions. Complete box of 10, finished in bright colours.

4/3

GT160. Model Toy Soldiers. Box of 10 Soldiers including horseman, bandsman and fighting soldiers, finished in lifelike colours.

4/3

GT130. Constructional Clock. This very attractive clock can be made up by any intelligent child, and has a 30-hour movement. A real clock which actually gives the time. Mounted on frame with attractive nursery designs.

15/-

GT162. Super Peepscope Set. An amusing novelty cine camera with 10 films portraying lifelike pictures and exciting stories.

8/6

G.T.
160

LENNARDS MAIL ORDER STORES · BRISTOL · ENGLAND



G.T.
168



G.T.
169



G.T.
170



G.T.
167

GT168. Black Baby Doll, lovely Baby Doll fully jointed with movable head, arms and legs. Beautifully finished head and dressed in gay cotton romper. **14/6**

GT169. Lovely Genuine Teddy Bear, 12 in. high with glass eyes, bow on neck and squeaker. Exceptional value. **12/11**

GT170. Long Eared Wool Rabbit, delightful cuddly toy for the small baby, made from deep pile fur, finished with glass eyes and bright ribbon. **5/6**

GT166. "Toyland" Carpet Sweeper, an all metal Sweeper which really works, with stout bristle brush and finished in gay nursery designs, the ideal gift for a little girl, complete with handle. **4/6**

GT164. Doll's Tea Set in plastic and enamel, comprising realistic teapot, kettle, 4 cups and saucers, 4 plates, milk jug and sugar basin and 4 sets of knife, fork and spoon, in attractive bright colours. Set **12/6**

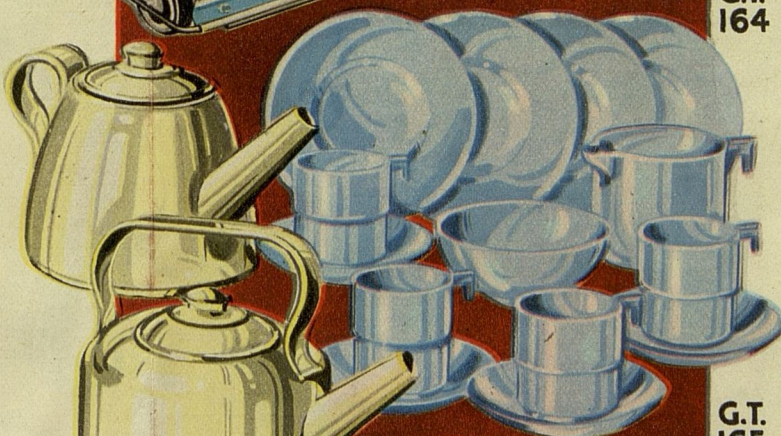
GT165. Kiddies' Shop Counter, with automatic scales and working cash register, complete with scribbling pad. **6/9**

GT167. Sleeping-Eye Baby Doll, this attractive doll is beautifully designed with real sleeping eyes and movable head, arms and legs, 16 in. high and remarkably lifelike. **15/-**

G.T.
166



G.T.
164



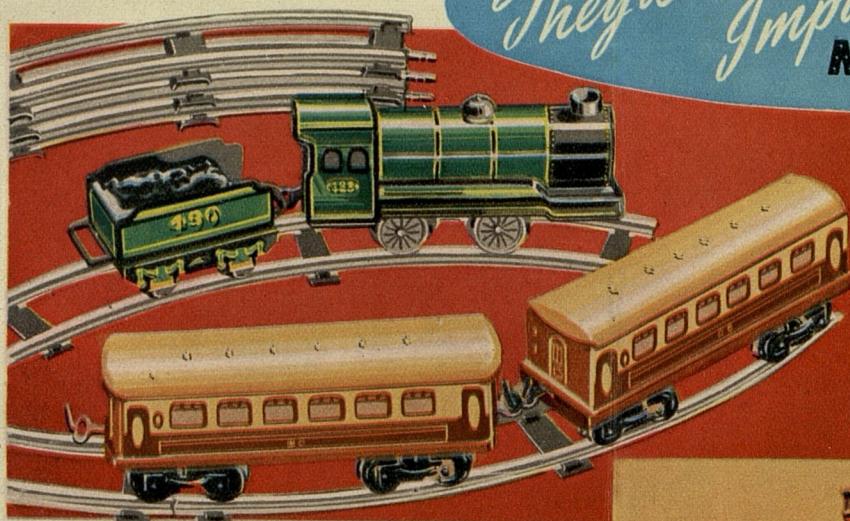
G.T.
165



LENNARDS MAIL ORDER STORES · BRISTOL · ENGLAND

*They're New!
Improved!*

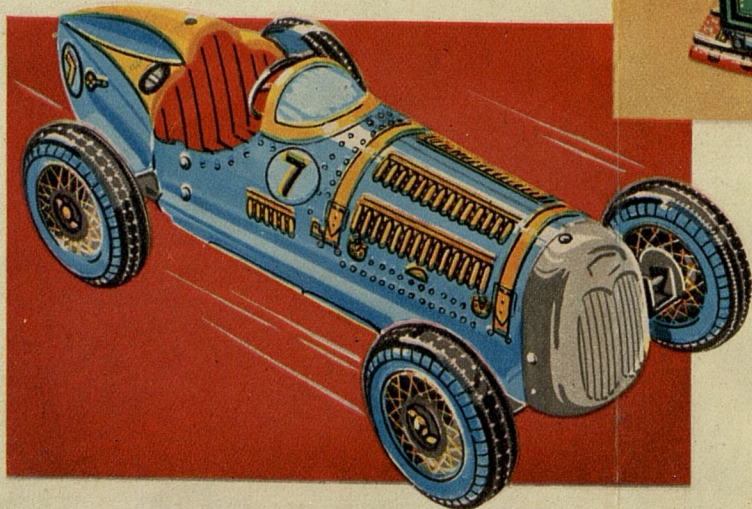
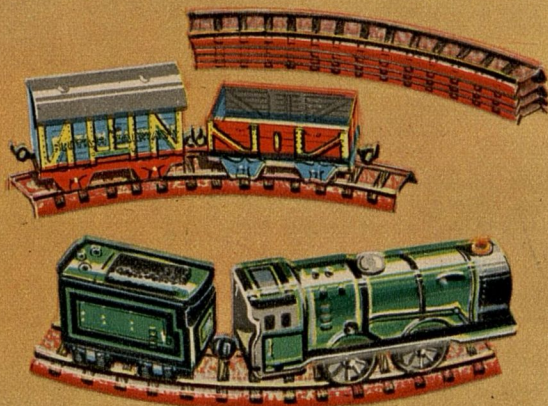
MECHANICAL!



GT153. Mettoy Passenger Train Set, a delight to any boy. A full scale all-metal model Train Set, perfectly accurate in every detail. The set comprises 2 Pullman Bogie Coaches, Engine Tender drawn by model locomotive fitted with strong clockwork mechanism and brake, complete with set of 6 curved rails, all suitably boxed. The entire set is constructed from attractively enamelled metal. **15/-**

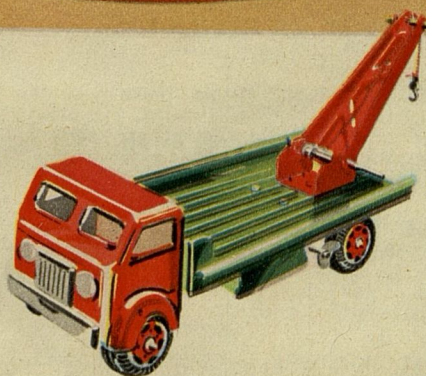
GT154. Mettoy Freight Train Set. A model Goods Train Set in miniature, strongly constructed and realistically coloured, this all metal set comprises strong clockwork locomotive with brake and tender, 1 open goods truck, and 1 livestock truck. Boxed complete with 8 curved rails.

10/-



GT155. Super Metal Clockwork Racing Car. A large full scale model 14½ in. long, accurately designed from a real model with super long bonnet, low chassis and steering wheel control, with excellent clockwork motor. All of the mechanical details of a real racing car are painted in bright enamels on the body and elaborate dashboard. Brake housed in driver's seat.

13/6



GT156. Heavy Haulage Truck with Crane. An all metal lorry with enclosed cabin and carrying a real working lifting crane. Beautifully finished in bright enamel and driven by a clockwork motor.

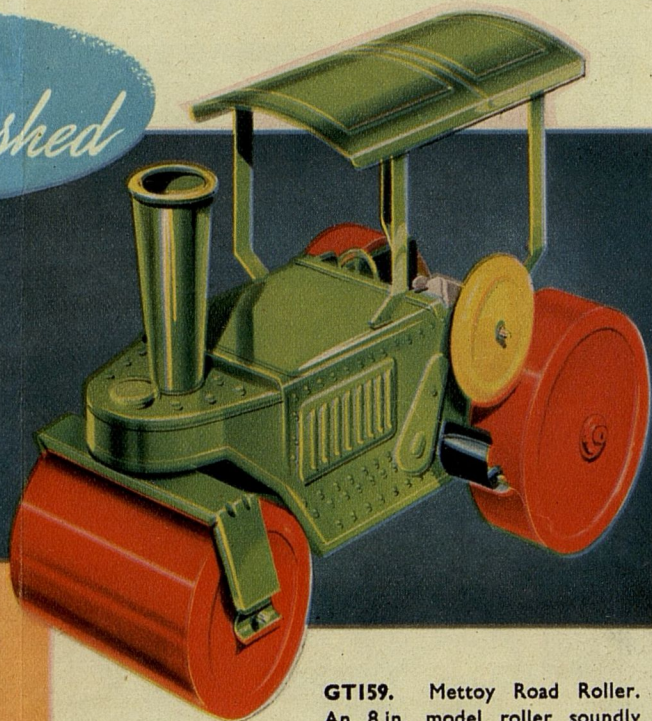
5/-

LENNARDS MAIL ORDER STORES · BRISTOL · ENGLAND

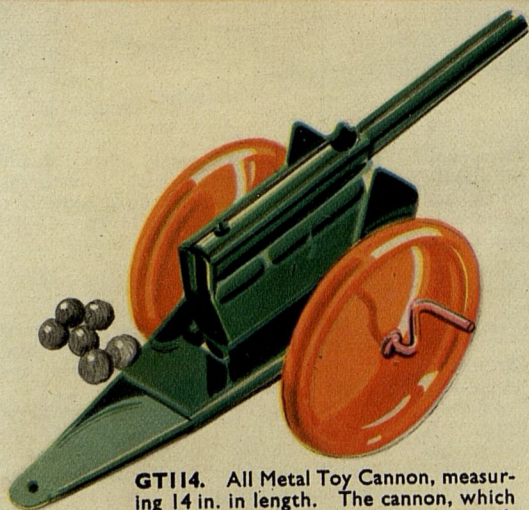
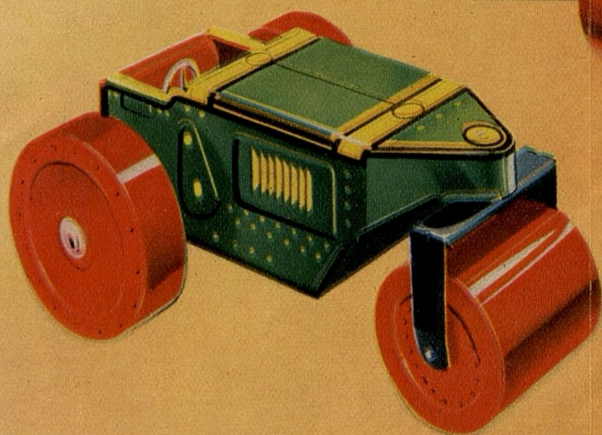
ROBUSTLY BUILT -

Beautifully Finished

GT157. Mettoy Large Scale Steam Roller. A realistic ALL METAL model 11½ in. long, 7 in. high. The model is a faithful copy of a road roller seen in everyday use, with large rear wheels and adjustable front roller. A strong clockwork motor automatically moves the roller backwards and forwards without attention. **15/6**



GT159. Mettoy Road Roller. An 8 in. model roller soundly constructed ALL METAL and finished with green body, red wheels and adjustable moveable roller. A strong clockwork motor gives an automatic forward and backward movement. **3/6**



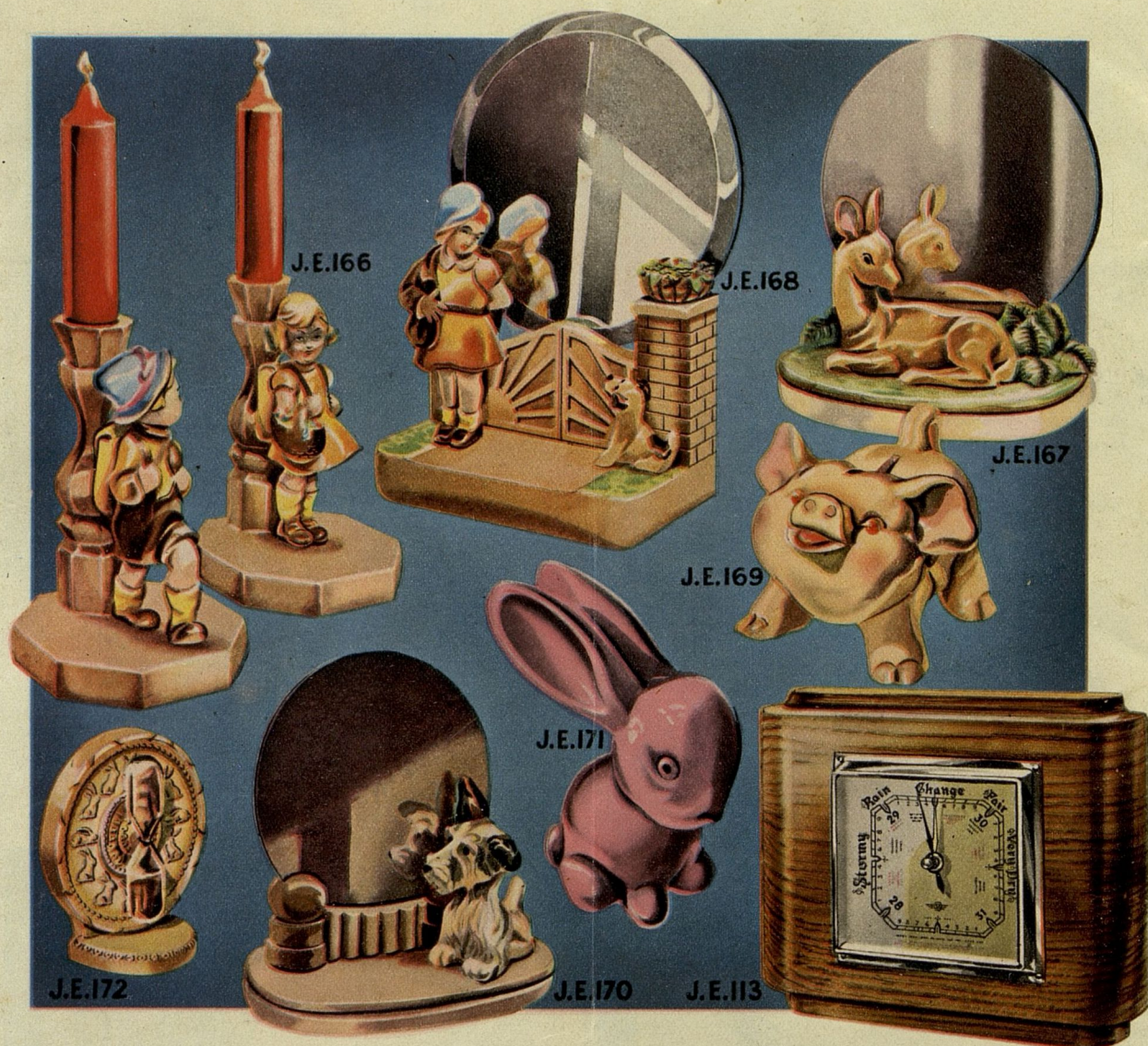
GT114. All Metal Toy Cannon, measuring 14 in. in length. The cannon, which has turning handle affixed for firing soft wooden pellets, is a very amusing but harmless toy. **5/6**



GT158. Garage Set, interesting and educational to the motor minded boy. The set comprises 2 model saloon cars and 2 model racing cars all fitted with heavy tyred wheels, 5 scale metal petrol pumps, 2 mechanics in working positions and chauffeur. All made from heavy cast iron and finished in bright enamelled colours.

Set complete **3/9**

LENNARDS MAIL ORDER STORES · BRISTOL · ENGLAND



JE166. Pair of very attractive candlesticks, beautifully designed Boy and Girl models. These are moulded from hard quality plaster delightfully coloured with cellulose washable spray and fitted with candles.
A very pleasing gift. Per pair **10/6**

JE170. Doggie Mirror Ornament, depicting Scottie Dog on stand, slotted and fitted with detachable mirror. 5 in. diameter.
Each **4/6**

JE172. Attractively designed Egg Timer, both useful and ornamental, and made to stand.
A reliable article. Each **2/6**

JE168. Delightful Mirror Ornament. Little Miss and Her Dog design. Beautifully coloured in natural tones and fitted with good quality silvered bevelled mirror 6 in. diameter. A most attractive and pleasing gift.
Each **10/6**

JE113. Handsome solid Oak Barometer, new modern design, finished in pleasing medium Oak shade and polished. Fitted with chrome plated bezel. A reliable aneroid instrument which has been tested for accuracy.
Size approx. : 8½ in.
Exceptional value. Each **45/-**

JE167. A very pretty Mirror Stand depicting Fawn at Rest. Naturally coloured in rich glazed cellulose and fitted with detachable mirror 6½ in. diameter. A gift that will be appreciated.
Each **7/6**

JE169. Little Piggie Bank, the newest American ornamental money box. Charmingly finished in natural and Pink cellulose, washable.
Each **3/9**

JE171. Lovely Pink Rabbit Ornament, solidly made from hard plaster material, artistically designed and coloured.
Each **2/6**

LENNARDS MAIL ORDER STORES · BRISTOL · ENGLAND

LENNARDS 1950 CATALOGUE

OVERSEAS EDITION

FOR OVERSEAS CUSTOMERS ONLY

Dear Customer,

Lennards have pleasure in sending you herewith their 1950 advance catalogue containing a wide selection of bargains all of good quality merchandise, guaranteed by this old established Company.

We are pleased to include from our footwear factories Shoes of the smartest style and design for both Men and Women, a large variety of London West End styled clothing for Men, Shirts of fine quality and Women's Knitwear and Underwear are included. In addition this, being the largest catalogue issued since before the war, contains numerous other goods which have previously been in short supply, and we would particularly draw customer's attention to the excellent value in Bedding, fine quality Wool Blankets from the Yorkshire Mills and high grade Cotton Sheets from the Mills of Lancashire. For the household there will be found very many domestic articles indispensable in the preparation and cooking of food.

We are sure that this catalogue will be received with enthusiasm and interest, and we ask you to make your selection and write out your order on the order form herewith, but before posting please read carefully the following instructions.

All goods advertised in this catalogue carry Lennards guarantee of satisfaction or money refunded in full. Your orders will receive prompt and careful attention.

Yours faithfully,

LENNARDS LIMITED.

CASH ON DELIVERY SYSTEM.

Customers' Orders can be sent to most parts of the world on Cash on Delivery terms but we must particularly ask Customers to note that all such Orders must be accompanied by a deposit of 20% (4/- in the £) as a guarantee of good faith. This will be deducted from the charge payable. Orders received for C.O.D. without a deposit cannot be despatched.

Before ordering refer to the Parcels Post Guide to make sure if there is a C.O.D. service to your District. In case there is not a C.O.D. service operating, full cash should be sent or arrangements made for payment through Customers' Banks.

From most colonial Post Offices notice is sent to the addressee upon arrival of parcel which must be paid for before delivery. All C.O.D. parcels must be promptly claimed otherwise they are returned to senders after a short interval.

Special Note.

FAMILY ORDERS.

Considerable saving in postage and other charges is effected upon family or group orders when friends combine together in selecting goods from this catalogue, as it is then possible to send together a selection of articles averaging only a few pence postage on each. When requested, we are pleased to mark respective goods to show each customer's portion of the expenses.

CORRESPONDENCE.

Considerable delay has been caused in the past by some customers not fully and adequately stamping their letters. It should be understood that if a letter does not carry the full postage due, there can be considerable delay at the Post Offices en-route and also of course, a double charge on the letter to Lennards. Will you therefore please make sure from your local Post Office the correct postage required on all correspondence. Letters marked Air Mail will not be delivered Air Mail unless they are adequately stamped, and we have had cases where customers have sent us letters thinking that they would reach us by Air Mail but have been sent by usual surface mail for this reason.

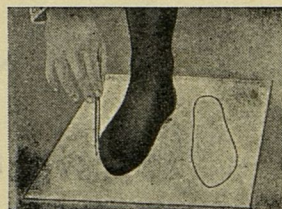
COMPLETE ADDRESS.

The importance of filling in the full and complete postal address cannot be over emphasised. This should be written plainly and clearly in block capital letters and we also ask customers to write on the back of the envelope this same full address.

INSTRUCTIONS FOR ORDERING FOOTWEAR AND CLOTHING.

It is necessary to give full and complete details as follows :—

Always quote Catalogue Page and Catalogue number of article concerned. State clearly size or fitting and colour required. For shoes state size and if in doubt, or the size is not known, send a careful tracing of your stockinged feet on a piece of paper. This will enable our Size Specialist to send you a correctly-fitting size shoe. A record of your size and fitting is kept and re-ordering is simplicity itself.



When ordering clothing, the following measurements only are required :—

Coats : Chest measurement over shirt.

Trousers : Waist measurement and length of inside leg.

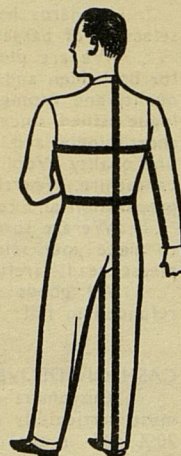
Shirts : State size of outside collar worn.

Raincoats, Overcoats, Mackintoshes :

State chest measurement over clothing and full length from back of neck to hem.

For the convenience of our customers, we quote English boot sizes, together with the French equivalent :—

English Boot sizes (Children's)	...			7	8	9	10	11	12	13	1	
French Boot sizes	24	25	27	28	29	30	31	33	
English Boot sizes (Adults)	2	3	4	5	6	7	8	9	10	11
French Boot sizes	34	35	37	38	39	40	42	43	44	46



DESCRIPTION OF GOODS.

When ordering we ask you to please quote catalogue number of the article required, the size required, as detailed above, and in the case of coloured goods, the actual colour required, and please state second choice in the event of the first choice being temporarily sold out. We are most anxious at all times to complete our customers orders exactly to your requirements, and this can only be done if you will be good enough to kindly observe these simple rules.

HOW TO WRITE OUT YOUR ORDER.

It will be of great assistance if customers will kindly write out their orders in the following manner:

Example:—

Page	Cat. No.	Article	Size	Quantity	Price
4	MC403.	Sports Coat	36in.	1	50/-
9	AC.109	Gent's Hanks	—	6	3/11
13	MS.103.	Gent's Shoes	7½	1 pr.	35/6
					89/5

Cash herewith £5

OVERSEAS REMITTANCES AND POSTAGE.

Whenever possible, remittances should be made by British Postal Orders, or by Money Orders crossed and made payable to Lennards Limited, at Bristol. Notes or cash should be sent only by Registered Post. Cheques are accepted if payable by a London Bank or agent and Overseas Banks will arrange this upon request.

SPECIAL NOTE.

In the event of a customer finding on collection at the Post Office that his order has been pilfered or damaged it is essential that the facts should be recorded and witnessed by the Postmaster with his official stamp and signature. This will greatly facilitate settling claims where shortages are involved.

PARCELS POST RATES

		2lbs.	3lbs.	Not over 7lbs.	11lbs.	22lbs
AFGHANISTAN						
Kabul, Jallalabad, and Khanadahr only.	No C.O.D.	2/9	4/6	4/6	5/6	—
ALGERIA via France	No C.O.D.	2/6	3/9	3/9	4/6	8/-
ANTIGUA. See Leeward Islands.						
ASCENSION	No C.O.D.	—	1/9	3/-	4/3	6/6
AUSTRALIA. 1/4 per lb., 6d. for each succeeding 1lb. up to 11 lbs.						
ADEN.	C.O.D.	—	2/-	3/9	5/3	8/3
BAHAMAS, BERMUDA.	C.O.D.	—	2/-	3/9	5/-	7/6
BAHRAIN. See Persian Gulf Ports.						
BARBADOS.	C.O.D.	—	1/6	3/-	4/3	6/9
B.A.O.R.	No. C.O.D.					
BELGIUM.	No C.O.D.	2/3	2/3	3/6	4/-	6/6
BELGIAN CONGO.						
Elisabetville via Antwerp and Lobito	No C.O.D.	—	5/-	7/9	10/9	20/-
All places except Katanga Province via Antwerp and Matadi.	No C.O.D.	—	4/3	6/9	9/6	17/6
Sea Direct Irregular. All Districts..		—	3/-	5/9	8/3	14/9
BRITISH HONDURAS via U.S.A.	C.O.D.	—	3/6	6/6	10/-	17/6
BRITISH GUIANA	C.O.D.	—	1/9	3/-	4/3	7/9
BRITISH SOMALILAND						
Bebera, Borama, Burao, Erigavo, Hargeisa, Zeilah only	C.O.D.	1/9	1/9	3/6	4/9	7/6
BRITISH TOGOLAND	C.O.D.	2/6	2/6	3/6	4/9	7/-
BRUNEI via Singapore	No C.O.D.	2/3	2/3	4/-	6/-	9/9
BURMA. £3 limit	C.O.D.	—	2/3	4/6	6/9	11/-
CANADA	No C.O.D.	—	2/3	4/3	6/-	9/-
CAMEROONS (BRITISH)	C.O.D.	—	2/6	3/6	5/-	7/6
CAMEROONS (FRENCH)	No C.O.D.	2/6	2/6	3/9	5/-	7/6
CAYMAN ISLANDS via Jamaica	C.O.D.	1/6	1/6	3/-	4/-	6/6
CEYLON	C.O.D.	—	2/-	3/9	5/3	7/9
CHINA via Suez						
Services to certain places	No C.O.D.	—	4/-	5/9	7/6	12/-
COLOMBIA (Republic of)						
(A) via U.S.A.	No C.O.D.	3/3	3/3	6/9	9/9	16/3
Sea Direct		2/9	2/9	6/-	8/6	14/3
(B) Buenaventura via U.S.A.	No C.O.D.	3/3	3/3	5/3	7/-	10/9
Sea Direct	No C.O.D.	2/9	2/9	4/6	5/9	8/9
(C) Barranquilla, Cartagena, Puerto, Colombia, (Sabanilla), Riomacha and Santa Marta only, via U.S.A.	No C.O.D.	3/3	3/3	5/3	7/-	10/9
COOK (OR HERVEY ISLANDS)						
Same as New Zealand						
CURACAO						
See Dutch West Indies						
CUBA (all places):—						
(via New York)	—	4/6	8/9	13/6	23/9	
(Sea Direct)	—	3/-	5/3	7/6	12/6	
Guantanamo Bay (U.S. Naval Station) via U.S.A.	—	3/3	7/3	11/9	21/6	
CYPRUS via Egypt	C.O.D.	—	2/6	3/9	5/-	8/3

CZECHOSLOVAKIA	C.O.D.	2/3	3/3	3/3	4/6	7/6
DENMARK	No C.O.D.	2/6	3/6	3/6	4/6	8/-
DOMINICA. Sea Direct or via Barbados	C.O.D.	2/-	2/-	3/9	5/-	8/-
DAHOMEY	No C.O.D.	3/-	4/6	4/6	5/9	10/-
DUTCH WEST INDIES Specified Islands only	C.O.D.	—	2/-	3/6	4/9	7/-
EGYPT. £10 limit	C.O.D.	—	2/-	3/6	4/6	7/3
FALKLAND ISLANDS To Port Stanley only	C.O.D.	—	2/3	3/9	5/6	9/-
FIJI ISLANDS Sea Direct specified Towns	C.O.D.	—	2/3	4/-	5/9	10/6
Via New Zealand	—	—	3/3	5/6	8/-	14/-
FRANCE	No C.O.D.	2/-	3/-	3/-	4/-	6/6
FRENCH TOGOLAND	No C.O.D.	3/-	4/6	4/6	5/9	10/-
FRENCH EQUATORIAL AFRICA (Gabon, Moyen Congo, Oubangui-Chari, Tchad) via France	No C.O.D.	3/3	4/6	4/6	6/-	10/6
GAMBIA	No C.O.D.	—	2/3	3/6	4/9	6/9
GERMANY (Gift Parcels only)	No C.O.D.	2/6	3/9	3/9	4/9	8/6
GIBRALTAR	C.O.D.	—	1/6	2/9	3/9	6/3
GILBERT AND ELLICE ISLANDS Not over 1lb, 1/4. Each additional 1lb, 10d. Limit 11lbs.	No C.O.D.	—	—	—	—	—
GREECE	No C.O.D.	2/3	5/6	5/6	7/6	12/3
GRENADA	C.O.D.	—	1/9	3/3	5/-	8/-
GOLD COAST	C.O.D.	—	2/6	3/6	4/9	7/-
HOLLAND. £5 limit	No C.O.D.	2/-	2/-	2/9	3/9	6/-
HONG KONG	C.O.D.	—	2/-	3/6	5/3	8/9
HONDURAS (Republic of) via Panama	No C.O.D.	2/6	3/9	3/9	4/9	7/9
via U.S.A.	2/9	5/-	5/-	7/-	12/-	—
HUNGARY	No C.O.D.	3/6	5/-	5/-	6/6	11/9
INDIA	No C.O.D.	—	2/-	3/9	5/3	8/3
IRAQ. Bagdad and Basra only	C.O.D.	—	2/6	4/3	6/-	10/9
IRAN	No C.O.D.	3/3	5/3	5/3	6/6	12/-
JAMAICA	C.O.D.	—	1/6	3/-	4/-	6/6
KENYA AND UGANDA	C.O.D.	—	2/9	4/6	6/3	10/3
LEEWARD ISLANDS	C.O.D.	—	3/3	4/-	4/9	9/-
LIBERIA	No C.O.D.	—	2/-	3/9	5/-	8/-
	—	—	2/6	4/6	6/3	9/9
MALAYA. See Straits Settlements						
MALTA	C.O.D.	—	1/6	2/9	3/3	6/-
MAURITIUS	C.O.D.	—	1/9	3/-	4/-	6/-
MARSHALL ISLANDS (Naura Island only) Not over 1 lb., 1/4. Each additional 1lb., 10d. Limit 11lb.						
MOROCCO (Tangier, British Post Office)	C.O.D.	1/6	1/6	2/9	3/9	6/3
MUSCAT. See Persian Gulf Ports						
NEPAL. See India						
NEW ZEALAND via Australia	No C.O.D.	—	2/3	4/-	6/3	9/3
Sea Direct	No C.O.D.	—	2/6	4/6	6/3	9/9
NIGERIA	C.O.D.	—	2/6	3/6	5/-	7/6

NEVIS. See Leeward Islands						
NEW GUINEA Mandated Territory	No C.O.D.					
Not over 1lb., 2/-. Each additional lb., 1/-. Limit 11lbs.						
NORWAY	No C.O.D.	2/6	3/6	3/6	4/6	7/9
NORTH BORNEO. Specified Towns	C.O.D.	—	2/3	4/-	6/-	9/9
NYASALAND PROTECTORATE	C.O.D.	—	3/6	5/9	7/6	10/-
PAKISTAN. See India						
PALESTINE	No C.O.D.	—	3/6	6/3	9/6	15/3
PERSIA (IRAN)	No C.O.D.	3/3	5/3	5/3	6/6	12/-
PERSIAN GULF. British Post Offices at Bahrain, Bubai (including Sharja) Kuwait and Muscat	No C.O.D.	2/-	2/-	3/9	5/3	8/3
PERSIAN GULF PORTS. Gwadar, (Pakistan) via India	No C.O.D.	2/-	2/-	3/9	5/3	8/3
POLAND	No C.O.D.	2/-	3/-	3/-	4/3	7/3
PORTUGUESE EAST AFRICA	No C.O.D.	—	2/9	4/9	5/6	8/-
RHODESIAN (NORTHERN)						
Via Cape Town, specified Towns only		1/8 per lb.				
Via Beira	C.O.D.	—	4/-	7/9	9/3	16/6
RHODESIA (SOUTHERN)						
Via Cape Town		1/4 per lb.				
Via Beira	C.O.D.	—	3/6	5/6	7/-	11/6
ST. LUCIA	C.O.D.	—	1/9	3/3	5/-	7/9
ST. KITTS. See Leeward Islands						
ST. VINCENT	C.O.D.	—	2/-	3/9	5/6	8/-
SARAWAK	C.O.D.	—	2/3	4/-	6/-	9/9
SENEGAL	No C.O.D.	—	2/-	3/6	4/9	7/3
SAUDI ARABIA. Via Egypt	No C.O.D.	4/-	5/6	5/6	7/-	12/6
SEYCHELLES*	C.O.D.	—	2/-	3/9	5/3	9/9
SIERRA LEONE GOLD COAST BR.						
TOGOLAND	C.O.D.	—	2/6	3/6	4/9	7/-
SOUTHWEST AFRICA**						
1/- per lb. Capetown	No C.O.D.	—	—	—	—	—
SOUTH AFRICA (Union of)**						
9d. per lb.	No C.O.D.	—	—	—	—	—
STRAITS SETTLEMENTS						
Malay States						
Lebuan, specified Towns	C.O.D.	—	2/3	4/-	6/-	9/9
SUDAN	No C.O.D.	—	2/6	4/-	5/-	8/-
SURIA (Republic of) via Egypt		4/3	6/6	6/6	8/6	15/6
ST. HELENA	No C.O.D.	—	1/9	3/-	4/3	6/6
SYRIA	No C.O.D.	3/3	5/6	5/6	7/6	13/-
TANGANYIKA TERRITORY						
Specified Towns only	C.O.D.	—	2/9	4/6	6/3	10/3
TORTOLA (BR. VIRGIN ISLANDS)	C.O.D.	2/-	2/-	3/9	5/-	8/-
TRINIDAD and TOBAGO	C.O.D.	—	1/9	3/3	4/9	7/-
THAILAND (Late SIAM)	No C.O.D.	4/6	4/6	6/3	8/3	13/9
TRANSJORDAN	No C.O.D.	3/9	6/3	6/3	8/9	14/9
TURKEY	No C.O.D.	4/9	7/3	7/3	9/3	16/6
UNITED STATES OF AMERICA						
All parts except Alaska		—	2/-	3/9	5/9	9/9
U.S.S.R. (in Europe)	No C.O.D.	5/3	5/9	5/9	6/9	12/-
(in Asia)	No C.O.D.	8/6	9/3	9/3	10/-	18/9
YUGOSLAVIA	No C.O.D.	4/-	5/6	5/6	6/9	12/3
ZANZIBAR	C.O.D.	—	2/3	3/9	5/6	9/6

(* limit 20lbs.)

(** limit 11lbs.)

Up-to-date Books

THE WORLD'S PEOPLES AND HOW THEY LIVE

Over 350 photographs and 34 pictorial maps. 512 pages. Over 30 fascinating chapters, each by an authority on the contemporary life of the country concerned. (Book Post 11d.)

9/6 6/4

THE WORLD'S GREATEST WONDERS

Ancient and modern marvels to be found in all parts of the world. (Book Post 11d.)

9/6 6/4

THE WONDERFUL STORY OF YOU

Nearly 200 illustrations, 384 pages. Cloth, stiff boards with jacket. Size 8½ x 5½ in. Easy read story of the nature of man's make-up. (Book Post 11d.)

7/6 5/-

EVERYDAY KNOWLEDGE IN PICTURES

Nearly 400 illustrations. 320 pages. Cloth, stiff boards with jacket. Size 9 x 6 in. A delightful and well-illustrated book of knowledge. (Book Post 11d.)

7/6 5/-

THE TECHNIQUE OF SEX

By Anthony Havil, B.A., written by a medical man specialising in the study of Obstetrics and Gynaecology.

5/-

THE RED LIGHT

By Rennie MacAndrew. A book which will provide guidance and enlightenment on sex problems for both men and women.

1/6

APPROACHING MANHOOD

By Kenneth M. Walker, M.B., F.R.C.S., M.A., etc. Simple book dealing with problems of healthy sex for boys.

3/6

LIFE LONG LOVE

By Rennie MacAndrew. (Sale restricted to adults.) A book dealing with healthy sex and marriage. (Book Post 11d.)

5/-

THE ART OF MAKING FRIENDS

A handy text book giving practical help and guidance in making new friends and keeping old ones.

1/3

WILL-POWER

A booklet which explains how will-power can be developed and confidence acquired.

1/3

MEMORY

How to make the most of it and train it.

1/3

THE WONDER GIFT BOOK FOR CHILDREN

Nearly 300 pictures. 330 pages. Size 10 x 7 in. A fine picture book, with stories by favourite authors, suitable for children 8-12 years. (Book Post 11d.)

7/6 5/-

THE PERFECT BABY

Practical and constructive advice for all mothers.

3/6 2/4

COMMON AILMENTS OF MAN

Their prevention and relief, discussed by experts.

3/6 2/4

YOUR FIRST BABY

Delightful book, complete with personalized baby record, many illustrations.

2/6 1/8

YOU ARE YOUNGER THAN YOU THINK

By Dr. Martin Gumpert, of U.S.A. This book tells the magnificently heartening story of how modern medicine is lengthening our life expectancy.

4/6 3/-

THE GOLDEN GIFT BOOK

Over 300 illustrations. 320 pages. Cloth, stiff boards with jacket. Size 10 x 7 in. Interesting children's book, suitable for children from 8-14. (Book Post 11d.)

7/6 5/-

THE TECHNIQUE OF SEX

LIFE LONG LOVE
By RENNIE MACANDREW

RED LIGHT
By RENNIE MACANDREW

Approaching MANHOOD
By KENNETH M. WALKER

MEMORY
How to make the most of it
By HENRIETTA L. HILL

The Art of Making Friends
By RENNIE MACANDREW

WILL-POWER
Ways to Develop It
By RENNIE MACANDREW

The PERFECT BABY
By CLAIRE MORTON

Your First Baby
By LOUISE CUPP

COMMON AILMENTS OF MAN
THEIR PREVENTION AND RELIEF
By MARTIN GUMPERT

YOU ARE YOUNGER THAN YOU THINK
By DR. MARTIN GUMPERT

The WONDER GIFT BOOK for Children

LENNARDS MAIL ORDER STORES · BRISTOL · ENGLAND

PLEASE READ CAREFULLY

CASH IN HAND BALANCES

Customers who have cash balances remaining with Lennards are requested to give here below fullest possible particulars in support of their claim. When sending in new orders, pin this sheet to order and enclose.

Some regrettable delay in dealing with customers' orders has taken place due to shortage of supplies in the past, but we are now pleased to advise customers that we have substantial stocks of footwear and all other goods and can generally execute orders direct from stock. We wish to make it quite clear that this form is to be used only by those customers who know that they have a sum of money outstanding to their credit. The amount should be entered in the appropriate column below together with the Cash Number which was sent on our acknowledgment card, and the date the money was sent. It is also, of course, necessary to give full and complete name and address, and to fill in, where applicable, the portion appertaining to change of address. Applications for these credit balances cannot be entertained unless this information is correctly given.

LENNARDS LIMITED

Bristol, England

PLEASE PRINT IN BLOCK CAPITAL LETTERS

FULL AND COMPLETE ADDRESS

AMOUNT CLAIMED			CASH NUMBER	IF CHANGE OF ADDRESS, PLEASE WRITE ADDRESS BELOW FROM WHICH CASH WAS SENT
				ADDRESS
			<u>DATE SENT</u>
			

37

<p>For full instructions as to ordering, terms, methods of payment, etc., see special instructions in Catalogue. Colonial C.O.D. orders can be executed if accompanied by a deposit, but it is to the advantage of customers to send full cash. This saves expense and delay.</p>		<p>AMOUNT ENCLOSED</p> <table border="1"> <tr> <td>£</td> <td>s.</td> <td>d.</td> </tr> <tr> <td> </td> <td> </td> <td> </td> </tr> </table>			£	s.	d.				<p>IMPORTANT.— If anything you order is temporarily out of stock, may we select and send for your approval our nearest similar line and so save delay? We guarantee the value and accept full responsibility for goods so sent, and they will be exchanged or money refunded in full if not approved.</p>	<p>PLEASE WRITE IN BLOCK LETTERS AND GIVE FULL & COMPLETE NAME AND ADDRESS</p>
£	s.	d.										
<p>Please state if First Purchase or Repeat Order.</p>	<p>ALL CARTONS AND BOXES USED FOR PACKING ARE CHARGED AT COST PRICE</p>	<p>DEPOSIT must be enclosed with C.O.D. or V.P.P. orders.</p>			<p>ANSWER _____ Please write Yes or No.</p>							

NAME _____

DATE _____

ADDRESS _____

TOWN _____ COUNTRY _____

[illegible]

38

LENNARDS 1950 CATALOGUE

CORRECTION

Item CS. 322, Childs Neat Strap Shoe, advertised on Page 44 of our catalogue is inadvertently described as "Good quality White washable grain leather." This description should read "Washable grained leatherette faced material."

It is regretted that a technical mistake has been made in this description, but nevertheless Lennards guarantee that this will give full satisfaction in wear.

Yours faithfully,
LENNARDS MAIL ORDER STORES.

Up-to-date Books

THE WORLD'S PEOPLES AND HOW THEY LIVE

Over 350 photographs and 34 pictorial maps. 512 pages. Over 30 fascinating chapters, each by an authority on the contemporary life of the country concerned. (Book Post 11d.)

9/6 6/4

THE WORLD'S GREATEST WONDERS

Ancient and modern marvels to be found in all parts of the world. (Book Post 11d.)

9/6 6/4

THE WONDERFUL STORY OF YOU

Nearly 200 illustrations, 384 pages. Cloth, stiff boards with jacket. Size 8½ x 5½ in. Easy read story of the nature of man's make-up. (Book Post 11d.)

7/6 5/-

EVERYDAY KNOWLEDGE IN PICTURES

Nearly 400 illustrations, 320 pages. Cloth, stiff boards with jacket. Size 9 x 6 in. A delightful and well-illustrated book of knowledge. (Book Post 11d.)

7/6 5/-

THE TECHNIQUE OF SEX

By Anthony Havil, B.A., written by a medical man specialising in the study of Obstetrics and Gynaecology.

5/-

THE RED LIGHT

By Rennie Macandrew. A book which will provide guidance and enlightenment on sex problems for both men and women.

1/6

APPROACHING MANHOOD

By Kenneth M. Walker, M.B., F.R.C.S., M.A., etc. Simple book dealing with problems of healthy sex for boys.

3/6

LIFE LONG LOVE

By Rennie Macandrew. (Sale restricted to adults.) A book dealing with healthy sex and marriage. (Book Post 11d.)

5/-

THE ART OF MAKING FRIENDS

A handy text book giving practical help and guidance in making new friends and keeping old ones.

1/3

WILL-POWER

A booklet which explains how will-power can be developed and confidence acquired.

1/3

MEMORY

How to make the most of it and train it.

1/3

THE WONDER GIFT BOOK FOR CHILDREN

Nearly 300 pictures. 330 pages. Size 10 x 7 in. A fine picture book, with stories by favourite authors, suitable for children 8-12 years. (Book Post 11d.)

7/6 5/-

THE PERFECT BABY

Practical and constructive advice for all mothers.

3/6 2/4

COMMON AILMENTS OF MAN

Their prevention and relief, discussed by experts.

3/6 2/4

YOUR FIRST BABY

Delightful book, complete with personalized baby record, many illustrations.

2/6 1/8

YOU ARE YOUNGER THAN YOU THINK

By Dr. Martin Gumpert, of U.S.A. This book tells the magnificently heartening story of how modern medicine is lengthening our life expectancy.

4/6 3/-

THE GOLDEN GIFT BOOK

Over 300 illustrations, 320 pages. Cloth, stiff boards with jacket. Size 10 x 7 in. Interesting children's book, suitable for children from 8-14. (Book Post 11d.)

7/6 5/-

THE TECHNIQUE OF SEX

LIFE LONG LOVE

RED LIGHT

Approaching MANHOOD

MEMORY

The Art of Making Friends

WILL-POWER

THE PERFECT BABY

Your First Baby

COMMON AILMENTS OF MAN

YOU ARE YOUNGER THAN YOU THINK

The WONDER GIFT BOOK for Children

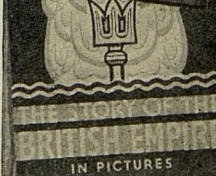
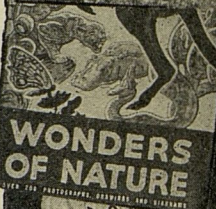
LENNARDS MAIL ORDER STORES · BRISTOL · ENGLAND

Books of Many Interests-

PRACTICAL FAMILY KNITTING ILLUSTRATED



ENGLAND TODAY IN PICTURES



THE MIRACLE OF MAN

Nearly 240 illustrations, 320 pages. Cloth, stiff boards with jacket. Size 9 x 6 in. An extremely interesting book for young and old. (Book Post 11d.) **8/6 5/8**

ENGLAND TO-DAY IN PICTURES

Life in England now. 384 pages, nearly 400 illustrations. Cloth, stiff boards with jacket. Size 9 x 6 in. A delightful book for people of all ages. (Book Post 11d.) **9/6 6/4**

THE STORY OF THE BRITISH EMPIRE IN PICTURES

Over 300 illustrations and 14 maps. 250 pages. Readers of all ages will enjoy this survey of the life and industries of the people of the Commonwealth. (Book Post 11d.) **7/6 5/-**

EVERY-DAY THINGS AND THEIR STORY

Over 200 illustrations. 256 pages. Cloth, stiff boards with jacket. Size 9 x 6 in. Modern marvels simply explained and illustrated. Suitable for all ages. (Book Post 11d.) **7/6 5/-**

WONDERS OF NATURE

Over 200 pictures, 250 pages. Cloth, stiff boards with jacket. Size 9 x 6 in. A fascinating book which describes many of nature's secrets. Suitable for all ages. (Book Post 11d.) **7/6 5/-**

THE COMPLETE HOME ENTERTAINER

500 pages with 370 specially drawn illustrations by well known artists. Cloth, stiff boards with jacket. Size 8 1/2 x 5 1/2 in. Many and varied games, including both new and old puzzles and problems of all descriptions. (Book Post 11d.) **7/6 5/-**

THE WORLD'S GREATEST SHORT STORIES

512 pages. Cloth, stiff boards with jacket. Size 8 1/2 x 5 1/2 in. A collection of 42 stories, from the works of the greatest authors of many countries. (Book Post 11d.) **7/6 5/-**

WORLD FAMOUS BOOKS IN OUTLINE

512 pages. Cloth, stiff boards with jacket. Size 8 1/2 x 5 1/2 in. 35 of the world's greatest literary masterpieces. (Book Post 11d.) **7/6 5/-**

PRACTICAL FAMILY KNITTING ILLUSTRATED

32 pages in full colour and over 200 photographs, 288 pages. Size 9 x 6 in. Contains instructions for making over 70 garments with simple explanation of the principles of knitting. (Book Post 11d.) **8/6 5/8**

THE PRACTICAL COMMERCIAL SELF-EDUCATOR

200 illustrations, 704 pages. Size 8 1/2 x 5 1/2 in. Up-to-date home instruction in various subjects involved in modern commercial life. (Book post 11d.) **10/6 7/-**

THE WORKS OF WILLIAM SHAKESPEARE

In one volume by Odhams Shakespeare Head Press. Large handsome presentation volume of 1,280 pages. (Book Post 11d.) **13/6 9/-**

ODHAMS DICTIONARY OF THE ENGLISH LANGUAGE

1,280 pages and over 1,200 illustrations covering approximately 80,000 entries. Size 8 1/2 x 5 1/2 in. (Book Post 11d.) **12/6 8/4**

THE PRACTICAL ENCYCLOPAEDIA FOR CHILDREN

Nearly 250 illustrations, maps and diagrams. 320 pages. Cloth, stiff boards with jacket. Size 9 x 6 in. Suitable for children from 8-14 years of age. (Book Post 11d.) **7/6 5/-**

DICTIONARY AND ENCYCLOPEDIA

The Complete HOME ENTERTAINER

THE WORKS OF WILLIAM SHAKESPEARE



Odhams Dictionary of the English Language

ILLUSTRATED

The Practical Commercial Self Educator

The World's Greatest Short Stories

WORLD FAMOUS BOOKS IN OUTLINE

EVERYDAY THINGS



LENNARDS MAIL ORDER STORES · BRISTOL · ENGLAND

HOW it is made

Over 400 illustrations, 384 pages. Cloth, stiff board with jacket. Size 9 x 6 in. Explains in non-technical language how a number of interesting, every-day things are made. **7/6 5/-**

Over 200 illustrations, 320 pages. Cloth, stiff board with jacket. Size 9 x 6 in. Interesting and informative material, written by acknowledged experts. **76 51**

Nearly 200 illustrations, 256 pages. Cloth, stiff board with jacket, size 9 x 6 in. Straightforward story of how the workers in some of Britain's greatest industries set about their jobs. **7/6 5/-**

Over 200 drawings, 320 pages. Cloth, stiff board with jacket. Size 9 x 6 in. 29 chapters, each telling the complete story of a great invention or discovery, in simple, non-technical language. **8/6 5/8**

Over 170 illustrations, 192 pages. Cloth, stiff board with jacket. Size, 10 x 7 in. Written for every woman, deals with the general upkeep of clothes, household linen, furnishings, etc. Simple instructions. 76 51

Well-written book, comprising 130 pages.
Interesting and expert information on
29 scientific subjects. Size 7 x 4½ in.
2/6 1/8

Over 300 illustrations, 320 pages. Cloth, stiff board with jacket. Size 10 x 7 in. Amazing story of life in the sea, on the land and in the air. **7/6 5/-**

140 pages, cloth, stiff board with jacket. Size 7½ x 5 in. Informative and interesting to students of the mind. **5/-**

Over 200 pages. Cloth, stiff board with jacket. Size $7\frac{1}{2} \times 5$ in. Written by a medical man in simple every-day language. Every-
man's Book of Anatomy. **5/-**

By M. J. Exner, M.D. A book which will provide enlightenment and guidance to both men and women. **6/-**

Over 20,000 entries. 1,100 illustrations.
Cloth, stiff board with jacket.
Size 8½ x 5½ in. **10/6**

Written especially for the foreigner.
Cloth, stiff board. Size 7½ x 5 in. **3/6**

An entirely new Dictionary ideal for School and Home. Cloth, stiff board. **1/6**
Size 6½ x 4 in.

Cloth, stiff board. Size 4½ x 3 in. 4/6

Size 10½ x 7½ in. Charming little book, ideal for young children. **1/6**

**MIRACLES
OF INVENTION
AND DISCOVERY**

THE MIRACLE
OF LIFE.

RAILWAYS SHIPS AND AEROPLANES

THE
NEW METHOD
ENGLISH DICTIONARY
MICHAEL WEST

THE
NEW IMPROVED
STANDARD
DICTIONARY

THE SEXUAL SIDE
OF MARRIAGE

KNOW
Thy Body

LIFE MY TEACHER BOOKS
POWER
OF THOUGHT

THE SECRETS OF OTHER PEOPLE'S JOBS

**PRACTICAL
HOME MENDING
MADE EASY**

40
From LENNARDS LIMITED

"The Home of Good Value"

BRISTOL — ENGLAND

MRS. H. ROERICH,
P.O. ~~NAGGAR~~
KULU PUNJAB.
INDIA.

41 mahal hotel

Bourhan

OR OCCUPIER

