



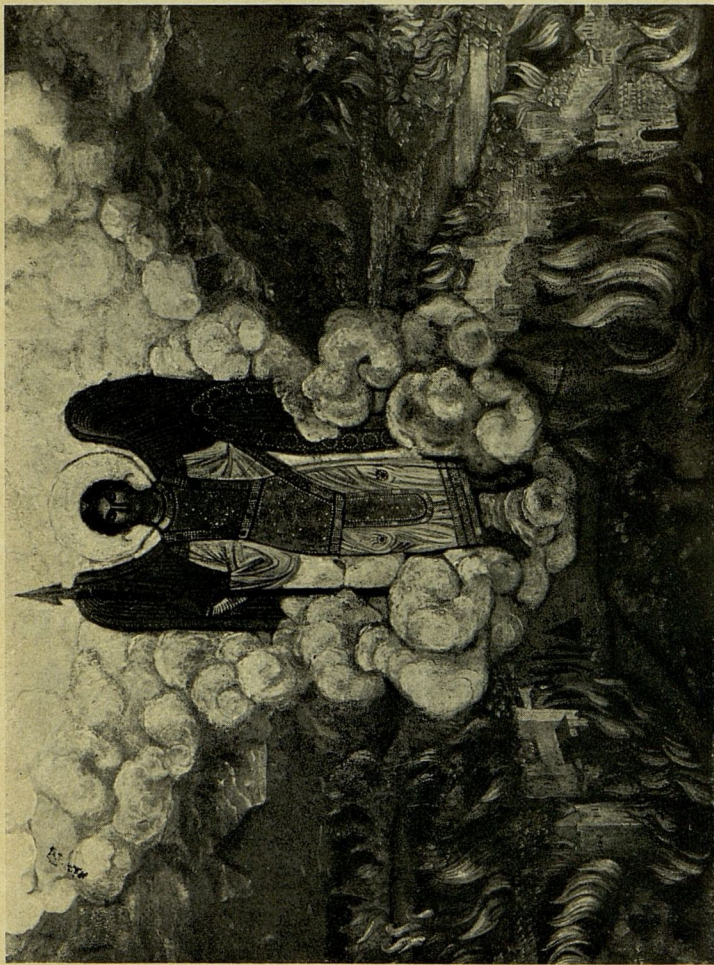
ROERICH
MUSEUM

CATALOGUE

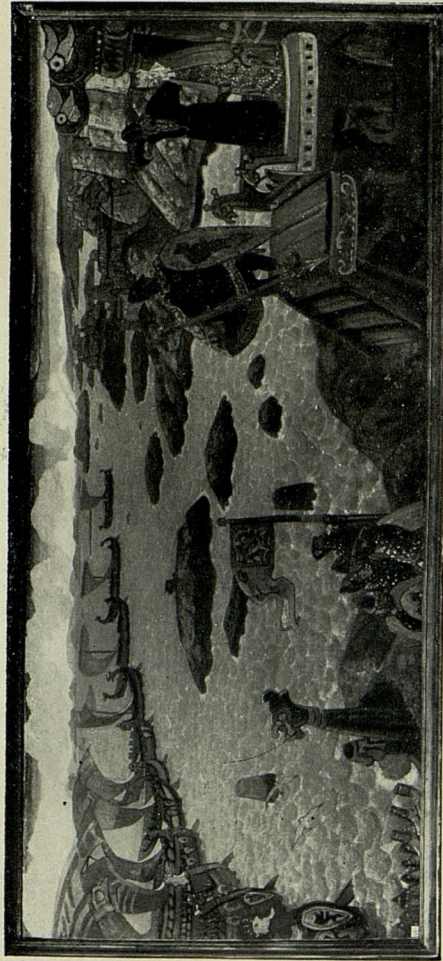
(Sixth Edition 1930)

310 RIVERSIDE DRIVE

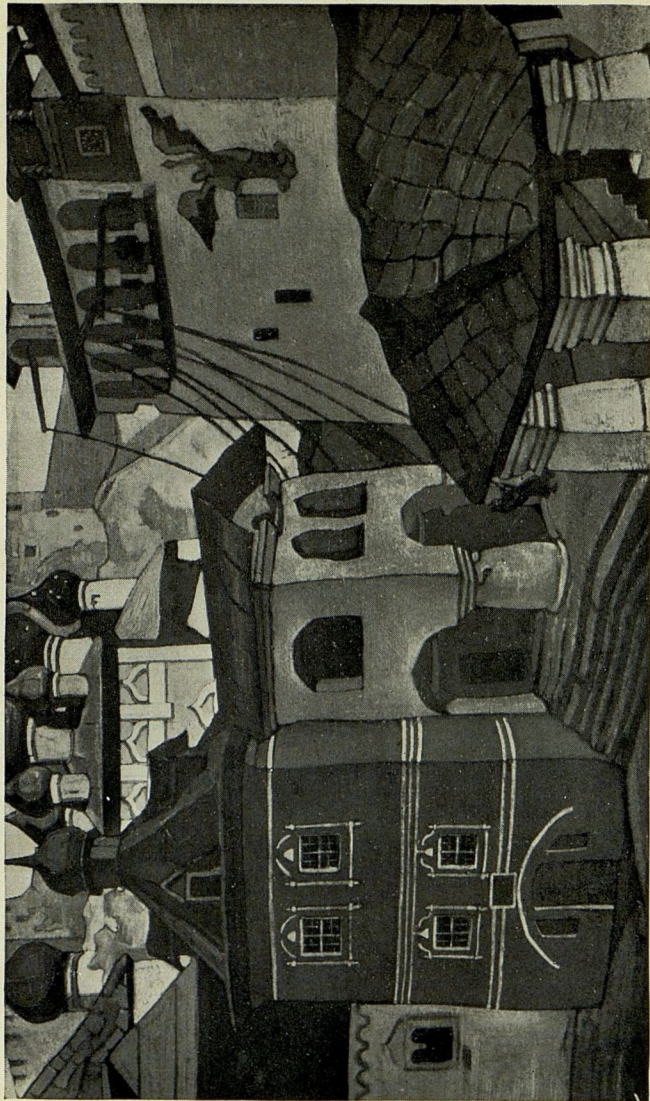
NEW YORK, N. Y.



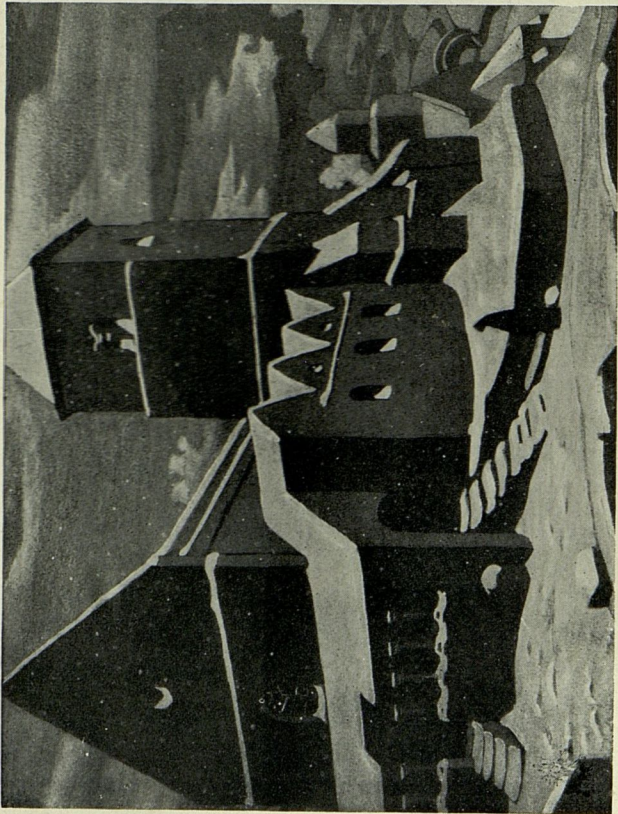
THE LAST ANGEL. 1912



VARENCIAN SEA. 1910



THE CALL OF THE BELLS. 1919



REPENTANCE. 1917



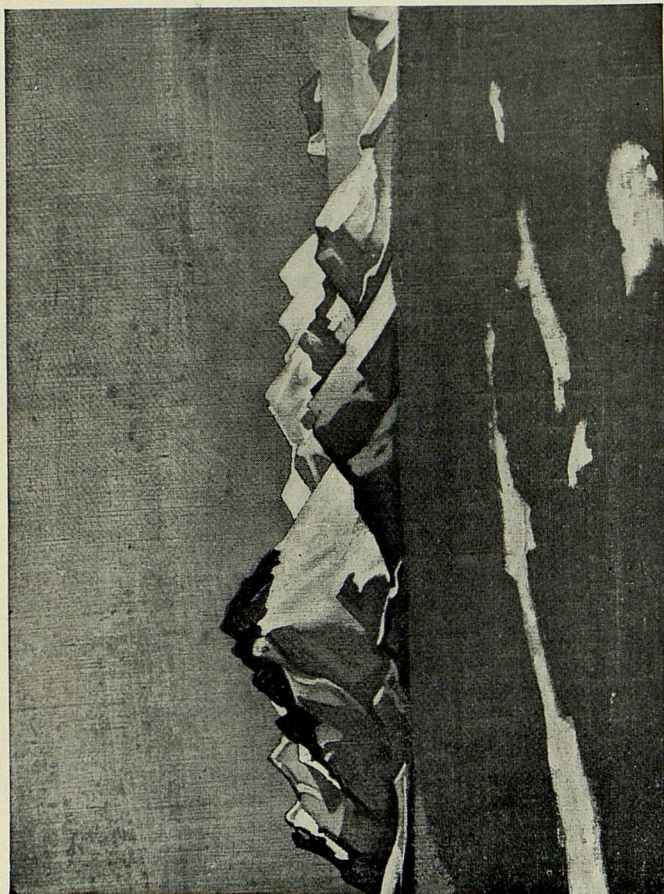
BUDDHA, THE CONQUEROR. 1925



SAINT PROCOPIUS BLESSING THE UNKNOWN TRAVELERS. 1910



TIBETAN WOMAN. 1927



KARAKORUM. 1925



THE WATCH ON HIMALAYAS ("BANNERS OF THE EAST" SERIES). 1925



**ROERICH
MUSEUM**

CATALOGUE

(Sixth Edition 1930)

310 RIVERSIDE DRIVE

NEW YORK, N. Y.

Roerich Museum Halls Nos. 20, 22, 23, 24, 27 are
named in honor of

Hon. Charles R. Crane
Maud and Chester Dale
Nettie and Louis Horch
Helena Roerich
Charles Wharton Stork

7

Paintings by
NICHOLAS ROERICH
From 1885-1929

1. The Treasure of the Angels (Fragment of a Fresco). 1904 R.
2. Sainly Visions. 1904 R.
3. Evening—"Slavonic" Series, Part II. 1906 R.
4. Pagan Russia. 1910 R.
5. The Viking's Daughter. 1918 R.
6. Rocks (Study). 1918 F.
7. Rocks and Sky. 1918 F.
8. The Call of the Sun (Second Version). 1918 F.
9. The Treasure. 1918 F.
10. Courtyard—Old Novgorod. 1918 F.
11. The Varenian Sea. 1910 R.
12. Messengers of Morn. 1917 F.
13. Study—Karelia. 1917 F.
14. Study—Lake of Hympola. 1917 F.
15. Misty Morning. 1917 F.
16. Blue Morning. 1917 F.

ABBREVIATIONS:

A.—Arizona; Al.—Altai; C.—Chinese Turkestan; F.—Finland; K.—Kashmir, India;
L.—London; L. E.—Loan Exhibition; M.—Mongolia; M. M.—Monhegan, Maine; N.—
Naggar, Himalaya; N. Y.—New York; R.—Russia; S. M.—St. Moritz and Chamonix,
Switzerland; S.—Sikhim, India; S. F.—Santa Fe, New Mexico; T.—Little Tibet; T. T.—
Tibet.

17. Ecstasy (Sketch). 1917 F.
18. Last King. 1922 N. Y.
19. Moonlight—Sortavala. 1917 F.
20. Atlant. 1921 N. Y.
21. The Secret Passage. 1918 F.
22. Ecstasy. 1918 F.
23. Mystery. 1918 F.
24. Cogitations. 1918 F.
25. Lake of Ladoga. 1917 F.
26. The Call. 1918 F.
27. The Wizard. 1918 F.
28. The Knight of the Morning.
29. The Knight of the Evening.
30. The Knight of the Night.
31. The Knight of the Night (Variant).
32. Northern Islands. 1918 F.
33. Clouds—Lake Ladoga (I). 1917 F.
34. Clouds—Lake Ladoga (II). 1917 F.
35. The Weaver of Spells. 1918 F.
36. The Miser. 1919 F.
37. Silence (Unfinished) 1919 A.
38. Not Gone Yet. 1917 F.
39. Famagusta. 1917 F.
40. Rocks—Tulola. 1918 F.
41. Church of Novgorod. 1919 F.

} From the
Series
"Eternal Knight."
1918 F.

42. Midsummer Night—Lake Ladoga. 1917 F.
43. The Motley Bay—Ladoga. 1918 F.
44. Valley—Tulola. 1918 F.
45. Ecstasy (Sketch II). 1917 F.
46. Sunset—Tulola. 1918 F.
47. Sunset—The Castle Mount. 1917 F.
48. The Outcast. 1918 F.
49. Autumn—Viborg. 1919 F.
50. Refugees. 1919 F.
51. Moonlight—Karelia. 1918 F.
52. Clouds. 1918 F.
53. Repentance. 1919 F.
54. Islands—Lake Ladoga (II). 1919 F.
55. The Weaver of Spells (Variant). 1919 F.
56. Morning (Study). 1918 F.
57. The Heat of the Earth. 1919 F.
58. The Call of the Bells—Old Pskov. 1919 F.
59. The Daughters of Earth. 1919 F.
60. Nyslot Olafsborg. 1906 F.
61. Khan Konchak, (Chaliapin's costume for Prince Igor). 1909 R.
62. The Call of the Sun (First Version). 1909 R.
63. The Red Mountains.
64. The Cave of the Trolls.
65. The Last Angel. 1912 R.

} For Peer Gynt, "Moscow Art Theater."
Stanislavsky's Production. 1912 R.

66. The Palace of Tzar Berendey ("Snegourotchka"), "Free Theater," St. Petersburg. 1912 R.
67. In Front of the Castle. ("Princess Maleine" Series), "Free Theater," Moscow. 1913 R.
68. The Queen's Room ("Princess Maleine" Series), "Free Theater," Moscow. 1913 R.
69. Queen Anne's Tower. ("Princess Maleine" Series), "Free Theater," Moscow. 1913 R.
70. A Corridor in the Castle ("Princess Maleine" Series), "Free Theater," Moscow. 1913 R.
71. Maleine's Chamber ("Princess Maleine" Series), "Free Theater," Moscow. 1913 R.
72. Pueblo (Unfinished). 1922 N. Y.
73. Tristan and Isolde. 1922 N. Y.
74. The Square in Putiville. ("Prince Igor"). 1914 R.
75. Prince Galitzky's Courtyard. ("Prince Igor"). 1914 R.
76. Yaroslavna's Tower Room. ("Prince Igor"). 1914 R.
77. Castle Mountain—Yhin-Lahti. 1917 F.
78. White Night. 1917 F.
79. The Giant's Grave. 1918 F.
80. The Island of Slaves. 1918 F.
81. Lapland Castle. 1918 F.
82. Mountain Lake. 1917 F.
83. The White Lady. 1920 L.
84. The Land of Giants (Sketch). 1919 F.

85. A Russian Hut. ("Tzar Saltan").
 86. Tmutarakan. ("Tzar Saltan").
 87. The Gates of Tmutarakan. ("Tzar Saltan").
 88. The Blue Sea. ("Tzar Saltan").
 89. Ledenetz Town (1) ("Tzar Saltan").
 90. Tristan and Isolde (Sketch). 1922 N. Y.
 91. The Shore near Ledenetz Town. ("Tzar Saltan"). 1920 L.
 92. Tzar Gvidon's Galley. ("Tzar Saltan").
 93. The Shore. ("Tzar Saltan").
 94. Ledenetz Palace. ("Tzar Saltan").
 - 95-115. Costume Designs for "Tzar Saltan."
 116. Sketch for Painting. 1920 L.
 117. The Enchanted City. 1920 L.
 118. Sketch for Painting. 1920 L.
 119. Courtyard of Prince Galitzky's Palace. ("Prince Igor"). Covent Garden. 1914 R.
 120. The Polovetzky Camp. ("Prince Igor") (Sketch). Diaghileff Ballet, Paris. 1914 R.
 121. Saint Boris and Saint Gleb (Sketch). 1919 F.
 122. Santa Fe, N. M. 1921.
 123. Drop Curtain and Portal.
 124. A Northern Night.
 125. Village of the Berendey.
 126. The Sacred Grove.
 127. The Valley of Yarila.
- } Covent Garden.
1920 L.
- } Covent Garden.
1920 L.
- } ("Snegourotchka.")
Chicago Opera Co.
1921 N. Y.

128. The Novgorod Market. }
 129. The Shore of Volhov. } ("Sadko.")
 130. Sadko's Palace. } Covent Garden.
 131. The Deep-Sea Realm. } 1920 L.
132. The City of the Serpent. 1920 L.
 133. Saint Gleb, The Guardian. 1920 L.
 134. The Song of the Moon. 1920 L.
 135. Santa Fe, N. M. 1921.
 136. A Persian Theater. 1920 L.
 137. Santa Fe, N. M. 1921.
 138. Saint George. 1920 L.
 139. Dream of the Orient. 1921 N. Y.
 140. Santa Fe. 1921.
 141. The Song of the Waterfall (Sketch). }
 142. The Song of the Waterfall (Panel). } ("Wisdom" Series.)
 143. The Language of the Birds (Sketch). } 1920 L.
 144. The Song of Morning (Panel.) }
 145. Saint Nicholas. 1921 N. Y.
 146. Message from the Past. 1921 N. Y.
 147. Offerings. 1910 R.
 148. Bugurstan—Caucasus. 1913 R.
 149. The Blue Range—Caucasus. 1913 R.
 150. The Rain Fairy. 1918 F.
 151-164. Rocks and Cliffs ("Ladoga" Series). 1918 F.
 165-171. Sketches for Paintings.

173. The Messenger. 1922 N. Y.
 172. Corona Mundi. 1921 N. Y.
 174. Command. 1921 N. Y.
 175. And We Are Opening the Gates. }
 176. And We Do Not Fear. }
 177. And We Are Trying. } "Sancta" Series.
 178. And We Continue Fishing. } 1922 N. Y.
 179. And We Are Bringing the Light. }
 180. And We See. }
181. Conflict. }
 182. Creation. }
 183. Fairy Tale. }
 184. Valor. }
 185. Strength. }
 186. Dream. }
 187. Day. } "Ocean" Series.
 188. Tension. } 1922 M. M.
 189. Coolness. }
 190. Reverie. }
 191. Hope. }
 192. Night Glimmer. }
 193. Smile. }
 194. Rest. }
 195. In Service. }
196. Language of the Forest. 1921 N. Y.

197. Saint Sergius. 1922 M. M.
 198. Sacred Hunters. 1921 N. Y.
 199. Snow Guardians. 1921 N. Y.
 200. Finland. 1919 F.
 201. Russian Ballet. 1921 N. Y.
 202-203. Cliff Dwellings. 1921 A.
 204-207. Grand Canyon, Ariz. 1921.
 208-210. Santa Fe, N. M. 1921.
 211. Rio Grande. 1921 S. F.
 212-213. Monhegan, Me. (Pastels). 1922.
 214. Last Path. 1922 N. Y.
 215. Solovetsky Monastery. 1923 N. Y.
 216. Sketch for a Painting. 1922 N. Y.
 217. Northern Lake (Sketch for the Painting, "Sacred Lake"). 1919 F.
 218-219. Tristan and Isolde. 1921 N. Y.
 220. Old Pskov ("Pskovitianka"). 1922 N. Y.
 221-275. Costumes for "Snegourotchka" and other operas.
 Productions: Covent Garden, London; Grand Opera, Paris;
 Chicago Opera, Chicago.
 276-282. Sketches for Paintings. 1920-1922 N. Y.
 283. Sketch for Stained Glass Window. 1922 N. Y.
 284. Monhegan, Me. (Sketch). 1922.
 285. Sketch for a Painting. 1922 N. Y.
 286-289. Switzerland Series. 1923 S. M.
 290. Mont Blanc. 1923 S. M.

291. Unfinished Painting. 1917 F. }
 292. Russian Village. } "Snegourotchka."
 293. Winter Gnomes. } Chicago Opera.
 294. Evening Landscape. } 1921 N. Y.
 295. Setting. }
 296-306. Sketches for Paintings. 1920-1923.
 307. Study—Lake Hymvola II. 1917 F.
 308. Meditation. 1921 N. Y.
 309. Vision. 1921 N. Y.
 310. Three Arrows. 1923 N. Y.
 311. The Book of Doves (Russian Legend). 1923 N. Y.
 312. Bridge of Glory. 1923 N. Y.
 313. Saintly Guests. 1923 N. Y.
 314. Legend—"Messiah" Series). 1923 N. Y.
 315. Miracle—"Messiah" Series). 1923 N. Y.
 316. The Song of the Viking. 1907 R.
 317. Building of the Temple. (Sketch to "Building of City" Series),
 Tretyakoff Gallery, Moscow. 1904 R.
 318. Sketch to "Sancta" Series. 1923 N. Y.
 319. Sketch to "Ocean" Series. 1922 M. M.
 320. Sketch to "Ocean" Series. 1922 M. M.
 321. Sketch to "Ocean" Series. 1922 M. M.
 322. Sketch. 1922 M. M.
 323. Yhin-Lahti. 1917 F.

324. Sketch to "Fuente Ovejuna." "Theater of the Past," St. Petersburg. 1911 R.
- 325-420. Sketches for Paintings. 1917-1918 F.
421. Sketch to "Messenger." 1918 F.
422. Sketch to "Eternal Waiting Ones." 1918 F.
423. White Horseman (unfinished). 1918 F.
424. Clouds. 1918 F.
- 425-439. Sketches to "Ladoga" Series. 1918 F.
440. Sketch to the "Call." 1917 F.
441. Sketch to "Cogitations." 1917 F.
442. Clouds. 1917 F.
443. Sketch to the "Knight of the Night." 1918 F.
444. Mist. 1917 F.
445. Sketch to "Ecstasy." 1917 F.
446. Unfinished Painting. 1917 F.
447. Clouds. 1917 F.
448. Sketch to "Peer Gynt." 1912 R.
449. Rocks. 1917 F.
450. Sketch to "Daughters of Earth." 1918 F.
451. Sketch to "Land of Giants." 1918 F.
452. Sketch to "Mountain Lake." 1917 F.
453. Sketch to "Church of Novgorod." 1918 F.
- 454-458. Sketches to costumes for a Russian Ballet. Productions: Diaghileff Ballet, Chicago Opera. 1921 N. Y.
459. Sketch to "Saintly Guests." 1923 N. Y.

460. Sketch to "Tristan and Isolde." 1922 N. Y.

"HIS COUNTRY" SERIES—1924 S.

461. Remember.
462. Book of Wisdom.
463. Pearl of Searching.
464. He Who Hastens.
465. She Who Leads.
466. Higher Than the Mountains.
467. Lower Than the Depths.
468. Fire Blossom.
469. Treasure of the World.
470. Burning of Darkness.
471. Star of the Mother of the World.
472. White and Heavenly.

"SIKHIM" SERIES—1924 S.

473. The Red Lama.
474. Namtse.
475. Pemayangtse.
476. Tashi-Ding.
477. Suburghan of Tashi-Ding.
478. Himalayas.
479. Sangacheling.
480. Drops of Life.

481. Rinchenpong.
482. Steps to the Himalayas.
483. Silhouette.
484. Mother of Tourfan.
485. The Sacred Gift.
486. Kinchenjunga.
487. Tonglu.
488-489. The Holies.
490. Dongkar.
491. Phari.
492. Gobshi.
493. Jelap-La.

"HIMALAYAN" SERIES—1924 S.

494. The Bamboos.
495. Namtse.
496. Everest.
497. Kinchenjunga.
498. Mist of Sikkim.
499. Hills.
500. New Moon.
501. Before the Mountains.
502. Sikkim.
503. Suburghans.
504. Mount Pandim.

- 13
505. Cloud.
506. Snows—Morning, Jelap-La.
507. Himalaya—Morning.
508. Himalaya—Morning.
509. Mist.
510. Everest Range.
511. The Prayer.
512. Crossing.
513. Waves of Mist.
514. Kinchenjunga.
515. Stupa.
516. Clear Evening.
517. The Mountains of Soshing.
518. The Range.
519. Mist Before Dawn.
520. The Crossing.
521. Stupa.
522. Pemayangtse.
523. Cool Evening.
524. Mendang.
525. Kinchenjunga.
526. View from Nepal.
527. Kinchenjunga.
528. The Snowy Ascent.
529. Monsoon.

- 530. Evening.
- 531. In Phalut.
- 532. To Gangtok.
- 533. Juna.
- 534. Nathu La.

"BANNERS OF THE EAST" SERIES—1924-1925

- | | | |
|--|---|---------|
| <ul style="list-style-type: none"> 535. Signs of Christ. 536. Mother of the World. 537. Lao Tze. 538. The Serpent. 539. Padma Sambhava. 540. Tsong-Kha-Pa. | } | 1924 S. |
| <ul style="list-style-type: none"> 541. Moses, the Leader. 542. Buddha, the Conqueror. 543. The Chalice of Christ. 544. Mohammed on Mount Hira. 545. Confucius, the Just One. 546. Yen-No-Guyo-Dja, the Friend of the Travelers. 547. Sarakha—the Blessed Arrow. 548. The Watch on Himalayas. 549. Sergius, the Builder. 550. rDorje, the Daring One. 551. Milaraspa, the One Who Harkened. 552. Nagarjuna, the Conqueror of the Serpent. 553. Oirot, the Messenger of the White Burkhan. | } | 1925 K. |

"LAKES AND GILGIT PATH" SERIES—1925 K.

- 554. Vulur Lake (Sketch).
- 555. Vulur Lake (Sketch).
- 556. Bandipur (Sketch).
- 557. Gilgit Road (Sketch).
- 558. Baramula.
- 559. Vulur Lake.
- 560. Gilgit Road.
- 561. Gilgit Road.
- 562. Manasbal Lake.
- 563. Dal Lake.
- 564. Dal Lake.
- 565. Nag Lake.
- 566. Landscape for Confucius. 1925 K.
- 567. Landscape for Yen-No-Guyo-Dja. 1925 K.
- 568-578. "Pir Panzal" Series. 1925 K.
- 579. The Crossroad of Christ and Buddha. 1925 T.
- 580. Astrological Observatory. 1925 T.
- 581. The White Horses. 1925 T.
- 582. Guru Kambala. 1925 T.
- 583-608. "Sanctuaries and Citadels" Series. 1925 T. and Mountains.
- 609. Source of the Indus. 1925 T.
- 610. Source of the Indus. 1925 T.
- 611. Nanga Parbat. 1925 T.

612. The Path to Tibet. 1925 T.
613. City in the Mountains. 1925 T.

ACQUISITIONS—1926-1927

614. The Battle. 1906 R.
615. The Blind. 1906 R.
616. Subterranean Fires. 1912 R.
617. The Enchanted City. 1912 R.
618. Night. 1916 R.
619. Village of Berendey. 1912 R.
620. Monastery. 1903 R.
621. Siberian Motif. 1903 R.
622. Sketch to "Tzar Saltan." 1919 L.
623. Sketch to Putiville, "Prince Igor." 1914 R.
624. Sketch to "Krimherd the Giantess." 1914 R.
625. The Battle. 1906 R.
626. Sketch to "Meeting of the Elders." 1898 R.
627. Sketch to "The Three Kings." 1910 R.
628. Sketch to "Siberian Frieze." 1903 R.

LITTLE TIBET AND MONGOLIA—1925-1927

629. Maulbek. T.
630. Sasser. T.
631. Matayan. T.
632. Beluha. AL.
633. Beluha. AL.
634. Panamik. T.
635. Shayok. T.
636. Karakorum. T.
637. Sasser, 16,600 Feet. T.
638. Tirit. T.
639. Tirit. T.
640. Ladak. T.
641. Kirgiz Ail. C.
642. Sasser. T.
643. VII Day, Shayok. T.
644. VIII Day, Shayok. T.
645. IX Day, Depsang. T.
646. X Day, Ulan Korum. T.
647. XII Day, 17,800 Feet. T.
648. XIII Day. C.
649. XIII Day, Ak-Tagh. C.
650. XV Day. C.
651. XVI Day. C.

652. Depsang. T.
 653. Mongolia. M.
 654. Pir Panzal. K.
 655. Pir Panzal. K.
 656. Toghrakdang. C.
 657. Karaul-davan. T.
 658. Khardong. T.
 659. Ak-Tagh, 17,000 Feet. C.
 660. Karakorum. T.
 661. Suget-davan. T.
 662. Taklamakan. C.
 663. Ruins of a Chinese Fort (Yarkend). C.
 664. Maulbek Gompa (Ladak). T.
 665. Mongolia, Evening. M.
 666. From Karaul towards the Karakorum Chain. C.
 667. Tibetan Lama. T.
 668. Tibetan Woman. T.
 669. Mongolian Lama. M.
 670. Pool of Issa (Leh). T.
 671. City. T.
 672. The Peak of Karakorum. T.
 673. Sketch for Sign of Maitreya. M.
 674. Sketch for Sign of Maitreya. M.
 675. A Street in Leh. T.
 676. The Valley of the Nubra. T.

- 16
677. Suget-davan. T.
 678. The One Who Safeguards. M.
 679. Spithug Ladak. T.
 680. Lamayuru, Ladak. T.
 681. Ladak. T.
 682. The Valley of the Nubra. T.
 683. Leh. T.
 684. Lamayuru (Gift of Nicholas Roerich to the Roerich Museum). T.
 685. Tibetan Estate. T.
 686. Sandoling. T.
 687. The Walk of Kuan Yin (Sketch). M.
 688. Lamayuru. T.
 689. Suget Pass. T.
 690. Tirit. T.
 691. Lamayuru. T.
 692. Sasser Pass. T.
 693. Karashahr. C.
 694. Depsang (Mountains). T.
 695. Ladak. T.
 696. Buddha the Tester (Gift of M. M. to the Roerich Museum). M.
 697. Commands of the Teacher. M.
 698. Padma Sambhava Rose Up (Sketch). M.
 699. The Awaiting One. M.
 700. The Command of Rigden Jyepo (Gift of Helena Roerich to the Roerich Museum). M.

701. Over Ergor Comes a Rider. M.
 702. Guardian of the Entrance. M.
 703. Sign of Maitreya. M.
 704. Mongolian Arrow (Unfinished). M.
 705. The Unspilled Chalice. M.
 706. Lhamo. M.
 707. Sunset. M.
 708. The One Who Departed. M.
 709. Mongolia. M.
 710. Dzong of Ladak. T.
 711. Guardian of the Entrance (Sketch). M.
 712. Bogdo Ula. M.
 713. The Unspilled Chalice (Drawing). M.
 714. Mongolian Arrow (Sketch). M.
 715. Hemis. T.
 716. Dzong of Ladak. T.
 717. Landscape for Maitreya. M.
 718. Bogdo Ula.
 719. Bogdo Ula. } Ulan Bator Khoto—Sacred Forest of the
 720. Bogdo Ula. } Mongols. M.
 721. Bogdo Ula, Storm. }
 722. The Tidings of the Eagle. M.
 723. Mongolia. M.
 724. The Command of Rigden Jyepo (Sketch). M.
 725. Album Leaf. M.

726. Album Leaf. M.
 727. Album Leaf. M.
 728. Leh, Ladak. T.
 729. Suburghans, Leh, Ladak. T.
 730. Bogdo Ula, Morning. M.
 731. Kereksurs. M.
 732. Kereksurs. M.
 733. A Kirghiz Mazar, Sanju. M.
 734. The Future (Variant Sketch). M.
 735-738. From Pir Panzal (Album Leaves).

ACQUISITIONS—1927-1928

- 739-752. Leaves, School Period. 1885-1887.
 753. Sketch to "Dragon in Flight," School Period. 1888 R.
 754-760. Sketches, School Period in Iswara. 1889-1890 R.
 761. Sketch of a Dog. 1892 R.
 762. Sketch, "Varengians." 1894 R.
 763. Self Portrait. 1894 R.
 764. Mother of the Artist. 1895 R.
 765. "Battlefield," Sketch for a Painting. 1895 R.
 766. Sketch, "Meeting of the Elders." 1896 R.
 767. Sketch, "Awaiting Ones." 1896 R.
 768. "Meeting of the Elders," Sketch for a Painting in the Oakland Museum. 1897 R.
 769. Leaf from an Album. 1902 R.

770. Sketch for a Self Portrait. 1906 R.
 771. Sketch to "The Archers." 1906 R.
 772. Sketch to "Boris and Gleb." 1906 R.
 773. Sketch to "The Calling One." 1907 R.
 774. Sketch to "Christ in Gethsemane." 1910 R.
 775. Sketch to "Elijah, the Prophet." 1910 R.
 776. Sketch for a Temple in Skernewitze, Estate of Emperor Nicholas.
 1910 R.
 777. "Triumph of a Viking," Auto-lithograph. 1910 R.
 778. Sketch for a Mural in a Temple in Talashkino. 1911 R.
 779. "Song of Solveig," from the Sketches to Peer Gynt. 1912 R.
 780. Sketch to "Sword of Valor." 1912 R.
 781. "Tristan and Isolde," Sketch for the Second Act. 1913 R.
 782. Album Leaf. 1915 R.
 783-798. Album Leaves—Sketches from: "Flying Carpet," "Con-
 quering of Kazan," "Forest Dwellers," "Procopius, the
 Righteous," "The Varengians," "The Arrows of Heaven,"
 "The Spears of Earth," "Sacred Spring." 1915 R.
 799-818. Album Leaves from Finland, Valamo. 1917-1918 F.
 819. Album Leaf from New Mexico. 1921 S. F.
 820-832. Album Leaves from Monhegan, Me. 1921 M. M.

MONGOLIA-TIBET—1927-1928 (L. E.)

- 833-835. Sharugen Monastery of Bon-po, Frontier of Kham. T. T.
 836. Thang La Pass. T. T.

837. Mount Jung (Namru District). T. T.
 838. The Protector of the Saga. T. T.
 839. Thang La Chain. T. T.
 840. Chatu Gompa Monastery on the Brahmaputra. T. T.
 841. Tenpei jal-tsen baishin (City of the Famed Bandit Ja lama). M.
 842. Mountain Lake Near Tengri nor. T. T.
 843. Frontier of Tibet. T. T.
 844. Mountains of the Frontiers. T. T.
 845. On the Way to Shekar Dzong. T. T.
 846. Shentsa jyal-khang. T. T.
 847. Dzong. T. T.
 848. Royal Monastery Chung-tü near Saskya. T. T.
 849. Himalayas from Ting-kye Dzong. T. T.
 850. Sinyol chu. T. T.
 851. Sittong. T. T.
 852. Chorten of the Black Faith of Bon-po. T. T.
 853. Shabden Monastery in Nagchu. T. T.
 854. Chatu Gompa on Brahmaputra. T. T.
 855. Shekar Dzong. T. T.
 856. Sepo La, Mountain Pass Near Kampa Dzong. T. T.
 857. Chang-thang at Nagchu. T. T.
 858. Mongol Tsam (Religious Ceremony). M.
 859. The Banner of the Ruler of the World. T. T.
 860. Lake in Himalayas. T. T.
 861. Maitreya on the Road. T. T.

862. Jyagong. T. T.
 863. Sharugen. T. T.
 864. Kampa-dzong. T. T.
 865. Meditation. T. T.
 866. Paranirvāna. T. T.
 867. Thangu Waterfall. S.
 868. Himalayas. S.
 869. Kangra lamo. S.
 870. Dzong at Evening. T. T.
 871. Bon-po Temple. T. T.
 872. Entrance. T. T.
 873. Talung Monastery. S.
 874. Tingri. T. T.
 875. A City. T. T.
 876. Bon-po. T. T.
 877. Brahmaputra (Tsang Province). T. T.
 878. Saga Dzong. T. T.
 879. Nagchu (House of the Expedition). T. T.
 880. Black Tibetan Tents. T. T.
 881. Chinese Tower in Central Gobi. M.
 882. Thang-la. T. T.
 883. Rock Relief of Buddha. T. T.
 884. The Light of Asia (Sketch for Painting). S.
 885. Studies of Clouds. T. T.
 886. Tibetan Ruins from the Chinese Conquests. T. T.

887. Grave in the Trans-Himalayas. T. T.
 888. Near the Tibetan Frontier. T. T.
 889. Ulan Daban (Pass on the Humboldt Chain, Kukunor District). M.
 890. Burein gol (Tsaidam). M.
 891. Monastery in the Tsang Province. T. T.
 892. Mount Everest Chain from Tsang District. T. T.
 893. Buddhist Cave. T. T.
 894. Shentsa Dzong in Trans-Himalayas. T. T.
 895. Site of the Mahatma's Camp, Kukunor District. M.
 896. Site of the Mahatma, August 5, 1927. M.
 897. Ruins of a Stupa. T. T.
 898. Sunset Near Shekar. T. T.
 899. The Rocks of the Buddhist Caves. C.
 900. Bon-po Dukhang. T. T.
 901. Sharugen. T. T.
 902. City of Ja Lama. M.
 903. Doring, Tibetan Menhir. T. T.
 904. Kinchenjunga. S.
 905. Shekar. T. T.
 906. Jung Pass. T. T.
 907. Brahmaputra (Tsang). T. T.
 908. Temple of the Protector of the Religion (Nag-chu). T. T.
 909. Trans-Himalayas near Saga. T. T.
 910. Tibetan Border—Neiji. T. T.
 911. Stupa in Sikkim. S.

912. Tingri dzong. T. T.
 913. Trans-Himalaya. T. T.
 914. Camp Near Shiboche (Kokonor District). M.
 915. Thang La Pass. T. T.
 916. Trans-Himalaya. T. T.

TIBET-SIKHIM-NAGGAR—1928-1929 (L. E.)

- 917-926. Castles of Gessar Khan (Sketches). T. T.
 927. Kailasa. T. T.
 928. Ling-Khor (Kampa). T. T.
 929. Himalaya. T. T.
 930. Karakorum. T.
 931. Tsaidam. M.
 932. Lamayuru. T.
 933. Mountains for Painting "Shambhala." S.
 934. The Last of Atlantis. S.
 935. "Chud—The Subterranean." S.
 936. Himalayas. S.
 937-938. Agni Yoga (Projects for Frescoes). S.
 939. Sikkim (Sketch). S.
 940. Tinky-Dzong. T. T.
 941. Himalayas. S.
 942. Sketch for Painting "The Book of Wisdom." S.
 943. Mongolia. Altin Tagh. M.
 944. Trans-Himalayas. T. T.

- 945-956. 12 Pages from the Sikkim Sketch Book. S.
 957. Sepola. S.
 958. Bharagarh Fort.
 959. Baragran.
 960. Phojaloti Khad. } "Kulu" Series. N.
 961. Taluapat Dhar. }
 962. Babu Pass. }
 963. Sultanpur Path. }
 964-967. 4 Leaves from Kulu Album, "Kulu" Series. N.
 968. Manjushri Khit (Mongolia). M.
 969. Tarbagatai. M.
 970. Ladak. T.
 971. Tibetan Kharbu. T.
 972. The Black Gobi (Mongolia). M.
 973. Guardian of the Chalice (Mongolia). M.
 974-975. Mongolia. M.
 976. Land of Manu, "Kulu" Series. N.
 978. Land of Manu (Variant), "Kulu" Series. N.
 979. The Black Gobi (Sketch). M.
 980. Kulu Valley, "Kulu" Series. N.
 981. Tsaidam. M.
 982. Leaf from the Tibetan Album. T. T.
 983. Thang-La. T. T.
 984. Guru Guri Dhar, "Kulu" Series. N.
 985. Ladak. T.

986. Taklamakan. C.
 987. Temple of Naggar, "Kulu" Series. N.
 988-990. 3 Leaves from Kulu Album. N.
 991. Summits of Lahoul, "Kulu" Series. N.
 992. Spring in Kulu, "Kulu" Series. N.
 993. Path to Malana, "Kulu" Series. N.
 994. Dungbure. T. T.
 995. The Greatest and the Holiest of Thang-La (from Series "Shambhala") (Gift of M. M. to the Roerich Museum). T. T.
 996. Krishna, "Kulu" Series. N.
 997. Arjuna, "Kulu" Series. N.
 998. Manjushri Khit. N.
 999. Sketch for "The Last of Atlantis." S.
 1000. Sketch, "Chud—The Subterranean." S.
 1001. Buddha from Sanga Cheling.
 1002. Sketch for Series "Shambhala." } Leaves from Album. S.
 1003. Sketch for Series "Shambhala." }
 1004. Land of Manu, "Kulu" Series. N.
 1005. Castle of Gessar Khan. T. T.
 1006. The Dowry of the Chinese Princess Wen-Ching. N.

21

NICHOLAS K. ROERICH

Biographical Data

Nicholas K. Roerich was born on October 10, 1874, in St. Petersburg, son of Konstantin F. Roerich, a noted barrister of Nordic descent, and of Marie V. Kalashnikoff, of an ancient Russian family of Pskov. The family of Roerich, according to genealogical data, originated from the Nordic Vikings and the name of Roerich is found in old chronicles dating back to the tenth century. Thus the future artist combines the Nordic qualities of his paternal ancestry with the Russian characteristics of his mother's family.

Roerich's special style, which has become a by-word as well as a symbol of an entire school of art, has its source in the general character of the artist. Even in his early childhood, Nicholas Roerich was already working in his unrepeatably individual style, thus building up the foundation of his self-developed art.

When Roerich was ten years old, staying on the family estate of his father, "Iswara", he began to observe ancient kurgans (mounds) dating from the Vikings and prehistoric Slavs. The Elders of the village prohibited him from touching these kurgans, but the boy convinced of his way, began personally to excavate them. He found exquisite bronze objects which he presented to the Archaeological Society. In this way, even in his childhood, the boy pursued his interests toward the beautiful.

At fifteen, already mastering the art of drawing and painting, he sent articles and drawings to illustrated art magazines under the pseudonyms "Isgoy" and "Molodoy" which were accepted and published. Thus was begun the artistic and literary career of the artist. Hence, when the twenty-fifth year of artistic activities of Roerich was celebrated in 1915, the date of his graduation from the Academy of Fine Arts was not taken as a basis, but rather the real beginning of his artistic self-expression.

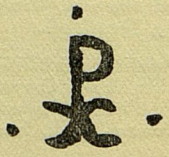
Thus, we have now a record of forty years of incessant creative ascent which have brought the name of Nicholas Roerich to the peoples of the entire world.

- 1883 Roerich entered the College of the famous educator, Dr. May.
- 1893 After graduating from College, Roerich entered the School of Law, Imperial University of St. Petersburg. At the same time he passed the requirements for entrance into the Imperial Academy of Art under Professor Kuindji. Roerich's father, an influential barrister, wished to give over to his son his very extensive practice. But the young Roerich, feeling that his goal was Art, solved the problem quite unexpectedly by combining studies in both Art and Law, an extremely difficult task.
- 1896 Roerich was graduated from the University.
- 1897 Roerich was graduated from the Academy. His first painting, "The Messenger", was purchased by the famous collector, Tretiakoff, for his Museum in Moscow.
- 1898 Conducted excavations. Became Professor of the Archaeological Institute and Art Editor of the Magazine "Art."
- 1899 Engaged in archaeological excavations for the Imperial Archaeological Society. Organized the first American Art Exhibition in Russia. Assistant Secretary, Imperial Society of Encouragement of Arts in Russia.
- 1900 Visited Paris, Holland, Italy. Studied with Cormon in Paris.
- 1901 Was elected General Secretary of the Imperial Society for the Encouragement of Arts in St. Petersburg. Married Elena Ivanovna, the daughter of the Architect, Shaposhnikoff.
- 1902 Held exhibitions in the Imperial Academy and in the "Mir Iskusstva" (Diaghileff). His works acquired by Nicholas II, the Tretiakoff Gallery, and the Imperial Academy.
- 1903 Made extensive trips throughout Russia. Held exhibition in "Mir Iskusstva" (Diaghileff), in Modern Art (Prince Stcherbatoff, and the Imperial Society for the Encouragement of Art).
- 1904 Made extensive trip through ancient cities of Russia. Held first exhibition in America at St. Louis, Mo.
- 1905 Held exhibitions in Prague (Mannes), Berlin, Venice and Vienna.
- 1906 Was nominated Director of the Art School of the Imperial Society for the Encouragement of Art. Made trip through France, Switzerland and Italy. Held exhibition in Paris. Elected Societaire of Salon d'Automne. Completed mosaics in the chapel on the estate of Mr. Golubieff (Kieff). Introduced broad reforms in the Art School.
- 1907 Visited Finland. Completed theatrical decorations.
- 1908 Visited Novgorod and Paris. Held exhibitions in Paris and Venice. Conducted his lectures in Yousupoff's Palace in St. Petersburg on The Stone Age.

- 1909 Visited Novgorod, Germany, Holland, England. Began his collection of Old Masters. Academician of the Academy of Fine Arts of Russia; Member of the Academy of Rheims. Held Exhibitions in Paris and London. Work acquired by the Luxembourg.
- 1910 Elected President of "Mir Iskusstva". Held exhibitions in Rome and Brussels. Painting acquired by the National Gallery of Rome. Conducted excavations of the Novgorod Kremlin.
- 1911 Began frescoes in the Temple of the Princess Tenisheff (Smolensk). Visited Germany and Holland. Designed theatrical productions.
- 1912 Completed frescoes in Smolensk. Collaborated with Stravinsky on "Sacre du Printemps". Designed "Peer Gynt" (Moscow Art Theatre).
- 1913 Completed mural, "Kerjenetz—Battle". Visited Caucasus. Designed settings for "Princess Maleine" (Maeterlinck).
- 1914 Visited Smolensk. Completed his Fresco there. First volume of writings published by Sytin (Moscow). Elected Honorary President of the Institute of Advanced Architectural Studies for Women. International Exhibition, Malmo. Commander of first class of Swedish Order of the Northern Star.
- 1915 Celebration of the twenty-fifth anniversary of his artistic and literary activities held. Elected President of the Imperial Commission for War-Invalids. Held exhibition at "Mir Iskusstva". Murals for Moscow-Kazan Railroad Station.
- 1916 Prepared for extensive world-tour of exhibitions and lectures. Visited Finland.
- 1917 Finland "Heroica" Series. Valamo. Project of Free Academy.
- 1918 Visited Sweden. Exhibition held at Stockholm. Work acquired by the National Museum of Stockholm. Visited Finland. Held exhibition at Helsingfors. Acquisitions by Atheneum.
- 1919 Visited Denmark. Exhibition held at Copenhagen. Arrived in England. Lectures.
- 1920 Remained in England. Exhibitions held in Goupil Gallery, London; Worthing Gallery, Worthing; Victoria and Albert Museum. Invitation from Dr. Harshe of Chicago Art Institute for exhibition tour in America. Arrives in New York with Mme. Roerich and their two sons, George and Sviatoslav, on October 2. Exhibition in Kingore Gallery, New York.
- 1921-2 Extensive tour through America. Exhibitions held in 28 cities throughout America. Lectures. Santa Fe, Grand Canyon, Arizona. Designed "Snegour-otchka" for Chicago Opera. Visited Monhegan, Maine. Founded Master Institute of United Arts and Corona Mundi, International Art Center.
- 1923 Extension of Master Institute of United Arts and Corona Mundi, International Art Center. "Adamant" published by Corona Mundi. Held exhibition in

Boston. Set out for the Roerich American Central Asiatic Expedition on May 8th. Visited Italy, Switzerland, India. Roerich Museum founded on November 17th by American Institutions.

- 1924 Visited India, Sikhim. Made trip to America. Opening of the Roerich Museum on March 24th. Sent paintings to the Roerich Museum.
- 1925 Continued Expedition—Egypt, Ceylon, India, Darjeeling, Kashmir, Ladak, Chinese Turkestan. Paintings sent to the Roerich Museum. "Adamant" translated by Itsuzo Takeuchi into Japanese.
- 1926 Continued Expedition—Chinese Turkestan, Altai, Mongolia. Paintings sent to the Roerich Museum. Monograph "Himalaya" published by Brentano's. Society of Friends of Roerich Museum was organized.
- 1927 Continued Expedition—Mongolia, Tibet. Paintings sent to Roerich Museum. "Archer" publication of Society of Friends of Roerich Museum inaugurated.
- 1928 Continued Expedition—Tibet, Sikkim, Darjeeling, Simla, Naggar. Paintings sent to Roerich Museum.
- 1929 Lived in Naggar. On May 17th started for New York; arrived June 18th. New twenty-four story Master Building for the Roerich Museum and its affiliated institutions completed and opened on October 17, 1929. Celebration of the Fortieth Anniversary of Roerich's artistic activities, when Commemorative Medal was awarded to artist. "Altai-Himalaya" published by Frederick A. Stokes & Company, New York. Inauguration of Roerich Museum Press and Urusvati, Himalayan Research Institute of the Roerich Museum. Foreign Committees of Society of Friends of Roerich Museum organized. "Flame In Chalice," "Heart of Asia," published by Roerich Museum Press; "Shambhala, The Resplendant," published by Frederick A. Stokes & Company.
- 1930 Honorary President, Maha Bodhi Society of America; Member of Jugoslavian Academy of Art and Science; Vice-President, Archaeological Institute of America. Painting "Castles of Maitreya" in Luxembourg, Paris. Production "Sacre du Printemps" with Stokowski for League of Composers, Metropolitan Opera, New York. Philadelphia, Pa. Visited France, England. Preparation, Lahoul Expedition.



Professor Roerich is President-Founder of the Master Institute of United Arts, New York, and of Corona Mundi, International Art Center, New York; Member of the Archaeological Society, Washington, U. S. A.; Fellow American Ass'n for the Advancement of Science, New York, U. S. A.; Fellow of the American Geographical Society, New York, U. S. A.; President-Founder, New-Syndicate, New York, U. S. A.; Honorary President, Alatas, Publishers, New York, U. S. A.; Honorary Advisor of the Y. M. C. A., New York, U. S. A.; Honorary Member, Boston Art Club, Boston, U. S. A.; Honorary President, Cor Ardens, Chicago, U. S. A.; Member of the Anglo-Russian Literary Society, London, England; Academician of the Academy of Fine Arts, St. Petersburg; Director of the School for the Encouragement of Fine Arts in Russia; Honorary President of the Council of Architecture for Women, St. Petersburg; Honorary Member of the Moscow Archaeological Institute, Moscow; Member of the Board, Fine Arts Editions of St. Eugenia, St. Petersburg; President of Council, Red Cross Art Workshop for Disabled Soldiers, St. Petersburg; Vice-President of the Council of Art in Russia, St. Petersburg; President of the Council of the Museum of Pre-Petrian Art, St. Petersburg; President Museum of Russian Art, Society for Encouragement of Fine Arts, Russia; Member of the Board, Society of Architecture, St. Petersburg; Member of the Russian Archaeological Society, St. Petersburg; First President of the "Mir Iskusstva" Society, St. Petersburg; Member of the Board, Society for Revival of Russian Art, St. Petersburg; Member of the Board, Society of Lovers of Art, St. Petersburg; Commander, First Class, Royal Swedish Order of North Star, Stockholm; Member of the Finnish Artists' Society, Helsingfors, Finland; Honorary Member of the Vienna Secession, Vienna, Austria; Life Member of the Indian Society of Oriental Art, Calcutta, India; Life Member of the Asiatic Society of Bengal, Calcutta, India; Honorary Member of the Bose Institute, Calcutta, India; Societaire of the Salon d'Automne, Paris, France; Member of the Societe des Antiquaires de Paris, France; Member of the Societe Prehistorique, Paris, France; Honorary Member of the Societe Lusace, Paris, France; Membre de la Societe Geographique, Paris, France; Membre Donateur de la Societe Ethnographique, Paris, France; Member of the Academie Nationale de Reims, France; Honorary President, Maha Bodhi Society of America; ^{Hon.} Member of Jugoslavian Academy of Art and Science; Vice-President, Archaeological Institute of America.

ROERICH MUSEUM

MASTER INSTITUTE
OF ROERICH MUSEUM
CORONA MUNDI
INTERNATIONAL ART CENTER
OF ROERICH MUSEUM

NICHOLAS ROERICH, *Honorary President*
LOUIS L. HORCH, *President*
M. M. LICHTMANN, *Vice-President*
FRANCES R. GRANT, *Vice-President*
SVETOSLAV ROERICH, *Vice-President*

HONORARY ADVISERS

PROF. JOHN J. ABEL, *Baltimore*
ROY CHAPMAN ANDREWS, *New York*
PROF. JACQUES BACOT, *Paris*
JAMES C. BENNETT, *New York*
SIR JAGADIS BOSE, *Calcutta, India*
ALFRED C. BOSSOM, *London*
GORDON BOTTOMLEY, *Carnforth, Eng.*
DR. CHRISTIAN BRINTON, *New York*
CLYDE BURROUGHS, *Detroit*
DR. GEORGE CHKLAVER, *Paris*
ALBERT COATES, *London*
HARVEY WILEY CORBETT, *New York*
HON. CHARLES R. CRANE, *New York*
LEON DABO, *New York*
MR. CHESTER DALE, *New York*
MRS. CHESTER DALE, *New York*
RALPH DAWSON, *New York*
ARMAND DAYOT, *Paris*
MISS AMELIA DEFRIES, *London*
MISS HELEN DUPEE, *Chicago*
GEORGE W. EGGERS, *Worcester, Mass.*
PROF. A. EINSTEIN, *Berlin*
HOWARD GILES, *New York*
FOREST GRANT, *New York*
MAGGIORE ENRICO GRASSI, *Verona*
A. KUMAR HALDAR, *Lucknow, India*
SAMUEL HALPERT, *Detroit*
RICHARD HAMMOND, *New York*
ROBERT B. HARSHE, *Chicago*
SVEN HEDIN, *Stockholm*
DR. EDGAR L. HEWETT, *San Diego*
J. B. HUBRECHT, *Madrid*
OSCAR B. JACOBSON, *Norman, Okla.*
DR. ALEXANDER KAUN, *Berkeley*
SPENCER KELLOGG, JR., *Buffalo*
PROF. ALEXANDER KLEMIN, *New York*
PROF. CHARLES LANMAN, *Cambridge, Mass.*
ROBERT LAURENT, *Brooklyn, New York*
DR. J. NEILSEN LAURVIK, *San Francisco*

ROERICH MUSEUM PRESS

URUSVATI
HIMALAYAN RESEARCH INSTITUTE
OF ROERICH MUSEUM

GEORGE L. LEBLANC, *New York*
PRESIDENT AUGUSTO B. LEGUIA, *Peru*
JULIUS M. LOWENSTEIN, *New York*
DR. R. V. D. MAGOFFIN, *New York*
PROF. NIKOLAI MAKARENKO, *Kieff*
LOUIS MARIN, *Paris*
IVAN MESTROVIC, *Zagreb, Serbia*
PROF. ALBERT A. MICHELSON, *Chicago*
MRS. M. C. MIGEL, *New York*
PROF. R. A. MILLIKAN, *Pasadena*
ROBERT MILTON, *New York*
SIDNEY M. NEWBERGER, *New York*
TH. OPPERMANN, *Copenhagen*
CHARLES PEPPER, *Boston*
MME. DE VAUX PHALIPAU, *Paris*
VITTORIO PICA, *Venice*
PROF. A. GEOUFFRE DELA PRADELLE, *Paris*
CARMELO RAPICAVOLI, *Rome*
DR. E. B. READ, *Peiping*
CONDE DEL RIBERO, *Havana*
MRS. MARY F. ROBERTS, *New York*
DR. RICARDO ROJAS, *Buenos Aires*
CURT N. ROSENTHAL, *Los Angeles*
MRS. C. SAGE-QUINTON, *San Francisco*
EDWARD E. SPITZER, *New York*
A. V. STCHUSEFF, *Moscow*
LEOPOLD STOKOWSKI, *Philadelphia*
C. WHARTON STORK, *Philadelphia*
HENRY M. SUGARMAN, *New York*
DR. HOMER F. SWIFT, *New York*
RABINDRANATH TAGORE, *India*
ITSUZO TAKEUCHI, *Kyoto, Japan*
DEEMS TAYLOR, *New York*
F. W. TRABOLD, *New York*
LOUIS VAUXELLES, *Paris*
DUDLEY CRAFTS WATSON, *Chicago*
THEODORE WEICKER, *New York*
IGNACIO ZULOAGA, *Zumaya, Spain*

SOCIETY OF FRIENDS OF ROERICH MUSEUM

President

THEOPHILE SCHNEIDER

Vice-Presidents

FOREST GRANT
MARY SIEGRIST
NETTIE S. HORCH
HENRY JUDSON
NATACHA RAMBOVA
DR. CHARLES FLEISCHER

Secretary-Treasurer

SIDNEY M. NEWBERGER
310 Riverside Drive, New York, N. Y.

FRENCH ASSOCIATION OF FRIENDS OF ROERICH MUSEUM

- HIS EXCELLENCY MONSIEUR LOUIS MARIN, *Honorary President*
Member of the Chamber of Deputies of France, former Cabinet Minister, President of the Ethnographical Society of Paris.
- MADAME DE VAUX-PHALIPAU, *President*
Vice-President of "Les Amis de la Lusace," Member of the International Institute of Anthropology.
- M. AUGUSTE GAUVAIN, *First Vice-President*
Member of the Academy of Political and Moral Sciences (Institute of France), Chief-Editor of the "Journal des Debats," Commander of the Legion of Honor.
- M. J. PEYRONNET, *Second Vice-President*
Art Editor.
- M. DR. GEORGE G. CHKLAVER, *Secretary-General*
Doctor of Law, Lecturer in the Institute of International Advanced Studies (Paris).
- M. RAOUL E. LAPEYRE, *Treasurer-General*
Editor.
- M. EDOUARD BONNEFOUS
Chief of the Cabinet of the Minister of Commerce and Industry.
- M. ARMAND DAYOT
Honorary Advisor, Roerich Museum, Chief-Editor-Founder of "L'Art et les Artistes," Inspector General of Fine Arts, Commander of the Legion of Honor.
- M. HENRY DROPSY
Artist, Knight of the Legion of Honor.
- M. MAURICE LELDIR
Artist, President of the "Societe des Aquarellistes Français," Knight of the Legion of Honor.
- M. ROBERT UMLTA
Editor.
- ADDRESS SECRETARY-GENERAL: Dr. George G. Chklaver, 397 Rue de Vaugirard, Paris XV.

OTHER FOREIGN BRANCHES

Jugoslavia

Secretary-General, DR. MILAN MARKOWITCH

Argentine

Chairman, DR. MANUEL BELTROY

Chile

Chairman, SENORA INEZ ECHEVERRIA DE LARRAIN

Peru

Chairman, MRS. HARRY PARKS

Uruguay

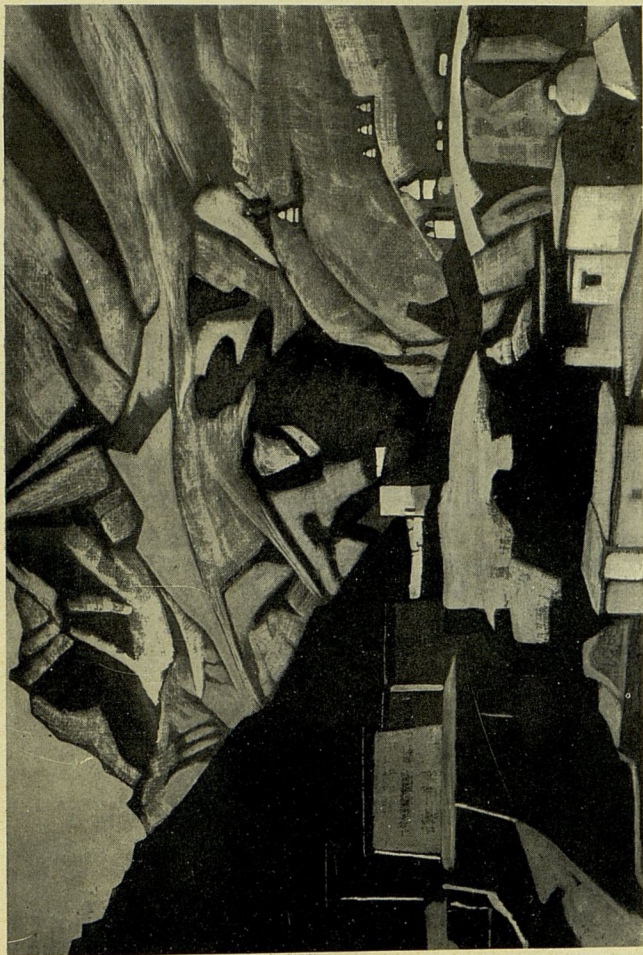
Chairman, DR. A. ARAUJO

BOOKS BY NICHOLAS ROERICH

- ADAMANT, A Collection of Essays, Pub. by Corona Mundi, International Art Center, New York, 1924.
- PATHS OF BLESSING (Russian), Collection of Essays, Published by Alatas Publishing Co., New York, 1925.
- ADAMANT (Japanese), Published in Tokyo, 1924.
- COLLECTED WORKS, Vol. 1, Published by Sitin, Moscow, 1914 (Rare).
- FLOWERS OF MORYA (Russian), Collection of Poems, Published by Slovo Berlin, 1921.
- ALTAI-HIMALAYA, Published by F. A. Stokes & Co., New York, 1929.
- SHAMBHALA, THE RESPLENDANT, Published by F. A. Stokes & Co., New York, 1930.
- HEART OF ASIA, Published by Roerich Museum Press, New York, 1929.
- HEART OF ASIA (Russian), Published by Alatas Publishing Co., New York, 1929.
- FLAME IN CHALICE, Poems by Roerich, Translated by Mary Siegrist, Published by Roerich Museum Press, 1929.

25
BOOKS ON NICHOLAS ROERICH

- ROERICH, A Monograph, with 53 Reproductions, Published by Corona Mundi, International Art Center, New York, 1924.
- ROERICH, A Catalogue, with Introduction by Dr. Christian Brinton, Published by Redfield, Kendrick, Odell, New York, 1920.
- WORLD OF ROERICH, A Biography, by Nina Selivanova, Published by Corona Mundi, International Art Center, New York, 1923.
- ROERICH, A Monograph (Jubilee Edition), Published by Swobodnoye Iskustvo, St. Petersburg, 1916 (Rare).
- HIMALAYA, A Monograph, with articles by Frances R. Grant, Ivan Narodny, Mary Siegrist, George Grebenstchikoff and "Banners of the East," by Roerich. With 100 Reproductions, 24 full color plates. Published by Brentano's, 1925.
- ROERICH DAY, A Symposium of Addresses on Roerich, Published by the Society of Friends of Roerich Museum, New York, 1928.
- ARCHER, Publication of the Society of Friends of Roerich Museum.
- THE MESSENGER, A Symposium of Articles, Published by Brahmayidyashrama, Madras, 1924.
- ROERICH (Russian), A Monograph by Serge Ernst, with 60 Reproductions, Published by Sainte Eugenie Society, St. Petersburg, 1918 (Rare).
- ROERICH (Russian), by Alexander Rostislavov, Published by Swobodnoye Iskustvo, St. Petersburg, 1918 (Rare).
- NICHOLAS ROERICH, APOSTLE OF WORLD UNITY, By Mary Siegrist, Reprint from World Unity by Society of Friends of Roerich Museum, New York, 1928.
- NICHOLAS ROERICH (French), by Dr. George Chklaver and Mme. de Vaux Phalipau, Published by Editions de Beau et de Vraie, Paris, 1928.
- ROERICH, A Monograph, Published by Zolotoye Runo, Moscow, 1907 (Rare).
- CATALOGUE OF ROERICH MUSEUM, Published by Roerich Museum, New York, 1929.
- ROERICH, by David Burliuk, Published New York, 1929.
- NICOLA ROERICH, Published by Editions de Beau et de Vrai, Paris, 1927.

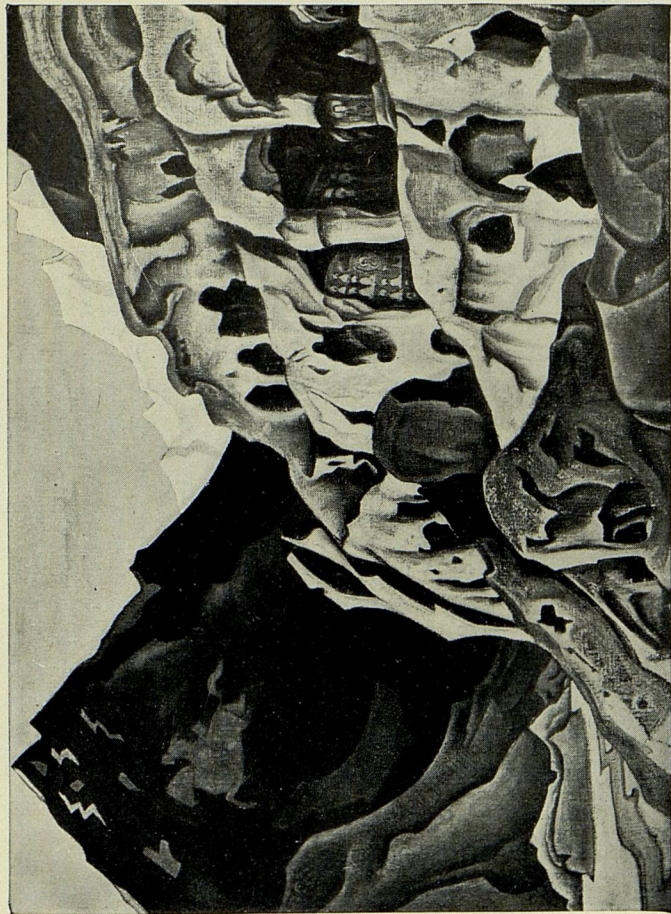


LEH. 1925



50

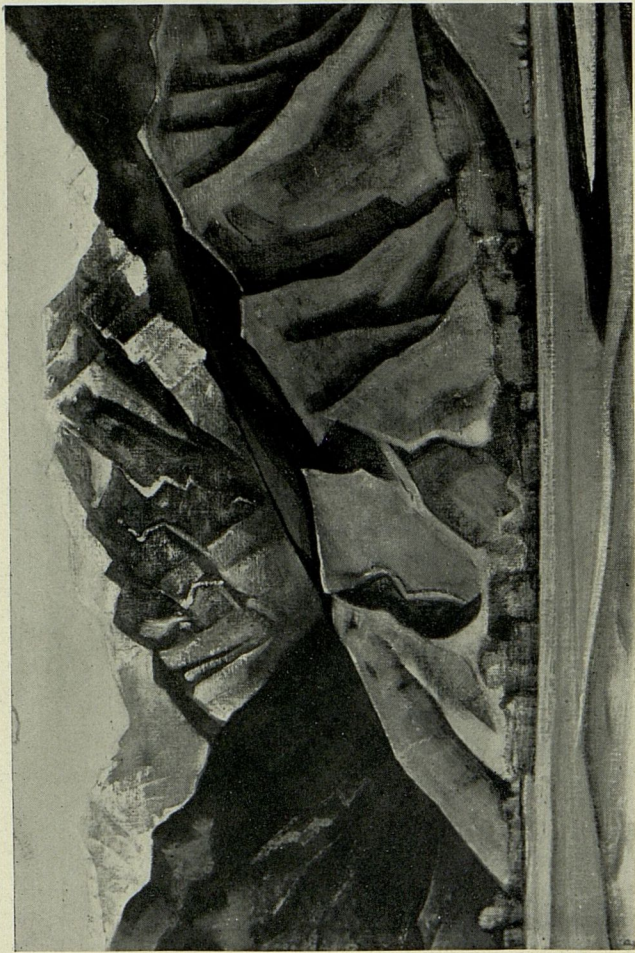
CONFUCIUS, THE JUST ONE ("BANNERS OF THE EAST" SERIES). 1925



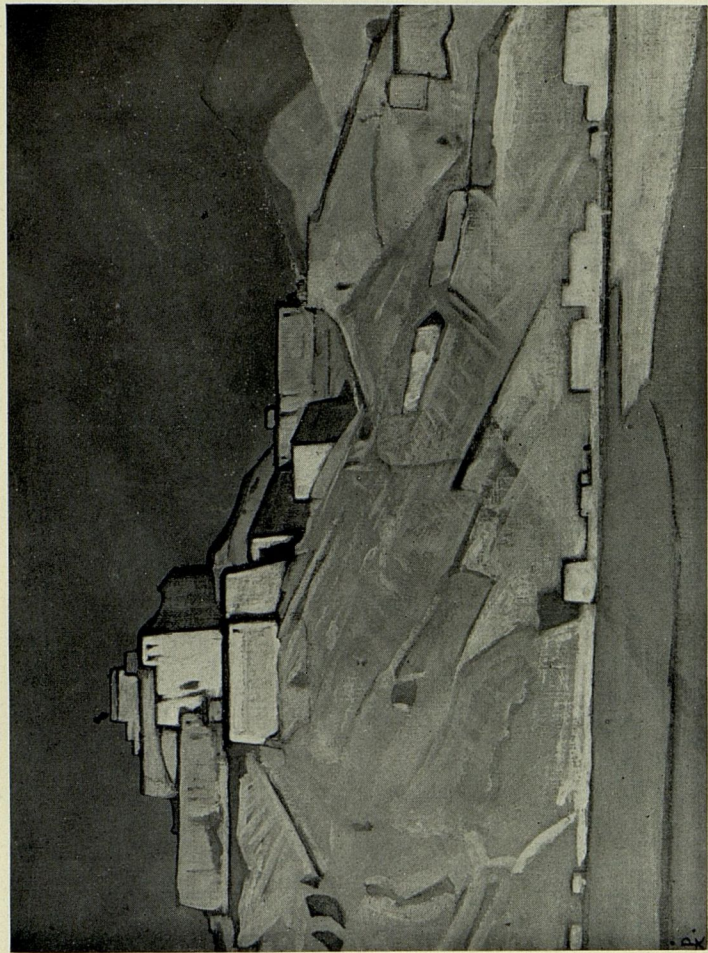
51

HOLY CAVES. 1926

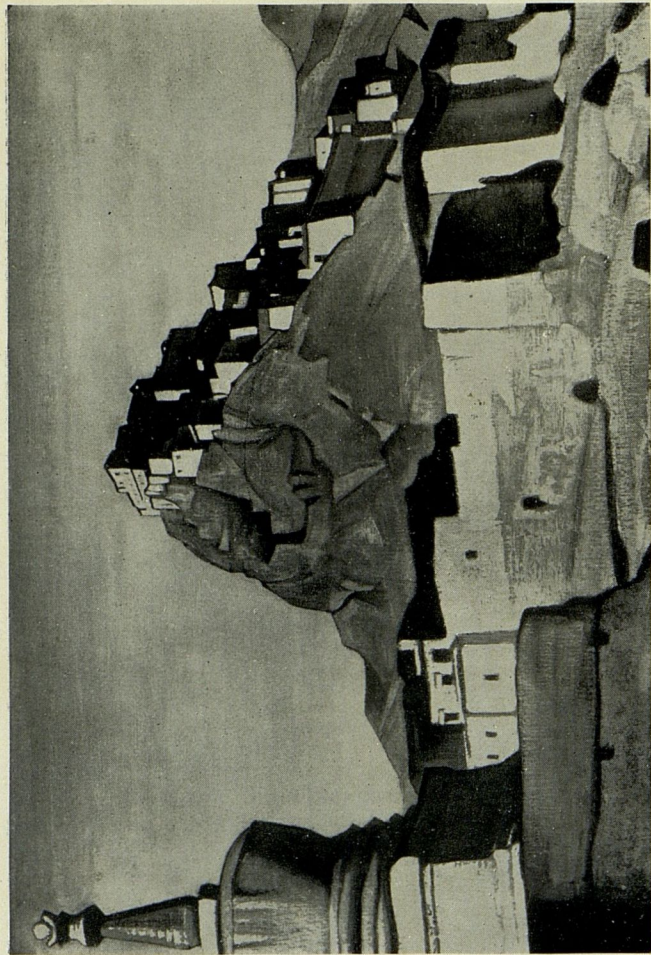
27



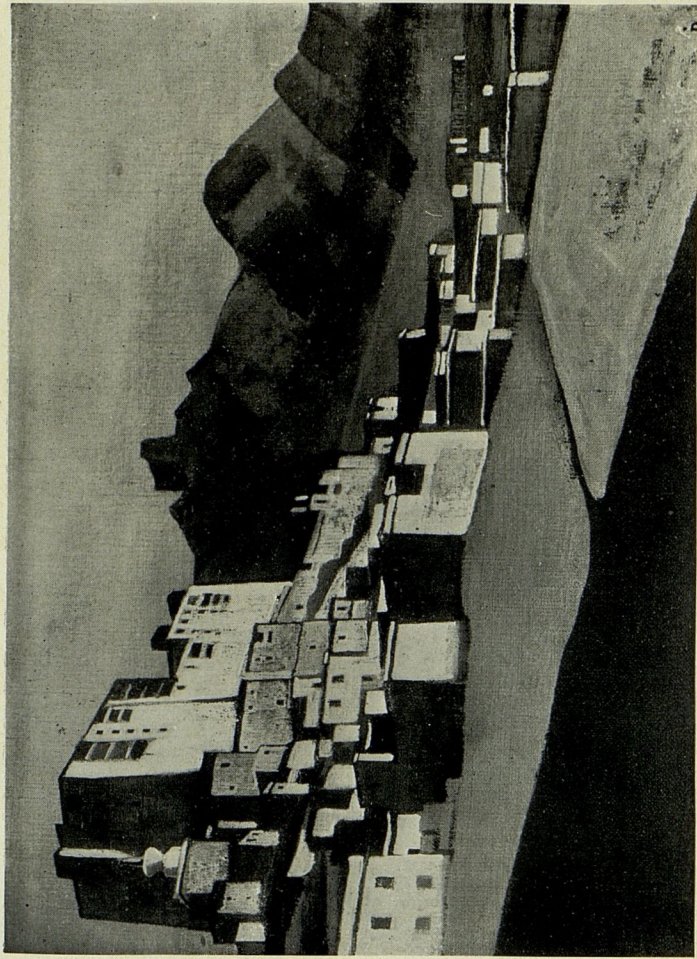
GILGIT ROAD. 1925



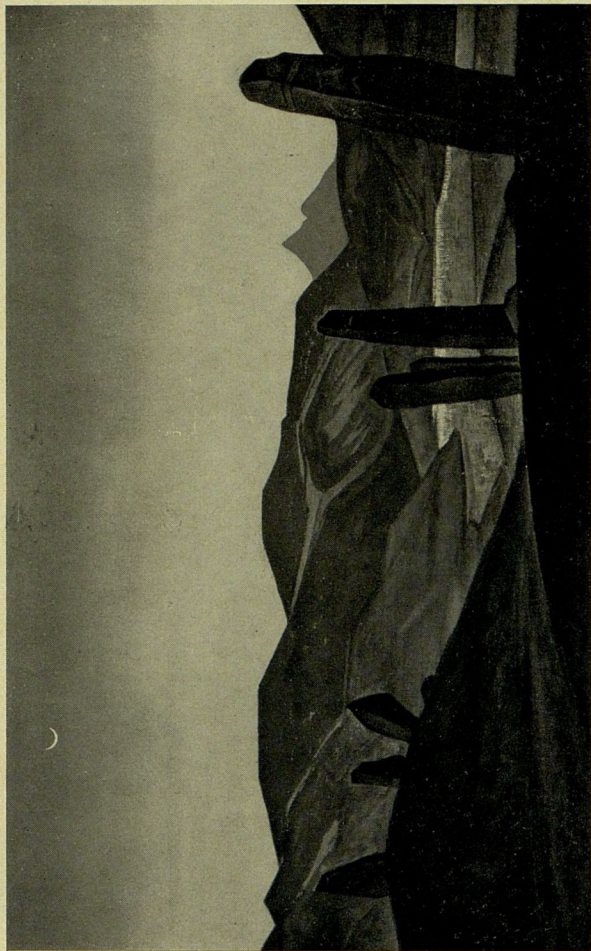
TIBETAN PATH. 1927



LITTLE TIBET. 1925



LEH. 1925



THE BLACK GOBI. 1928

